

Figure S1. The IHC results indicate high expression of SLC16A1 in cholangiocarcinoma tissue (200X).

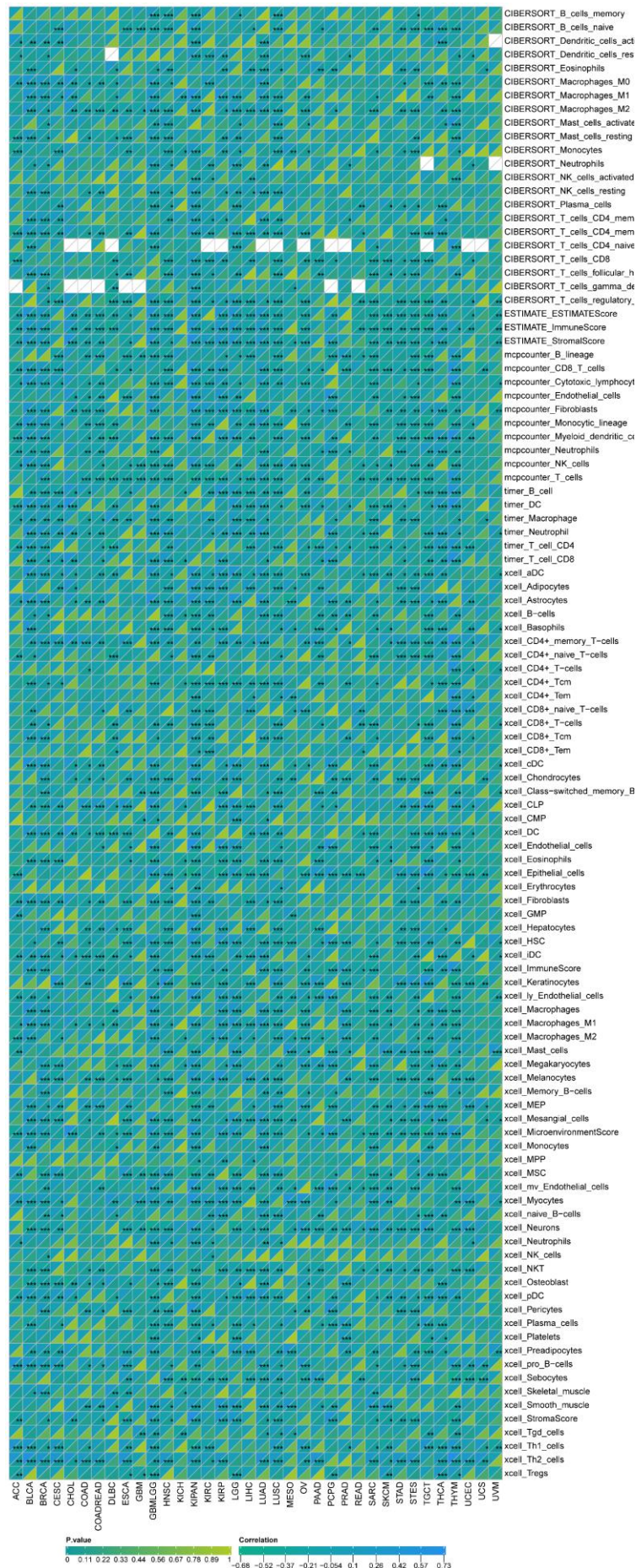




Figure S2. The association between the expression levels of SLC16A1 and the level of immune infiltration in pan-cancer.

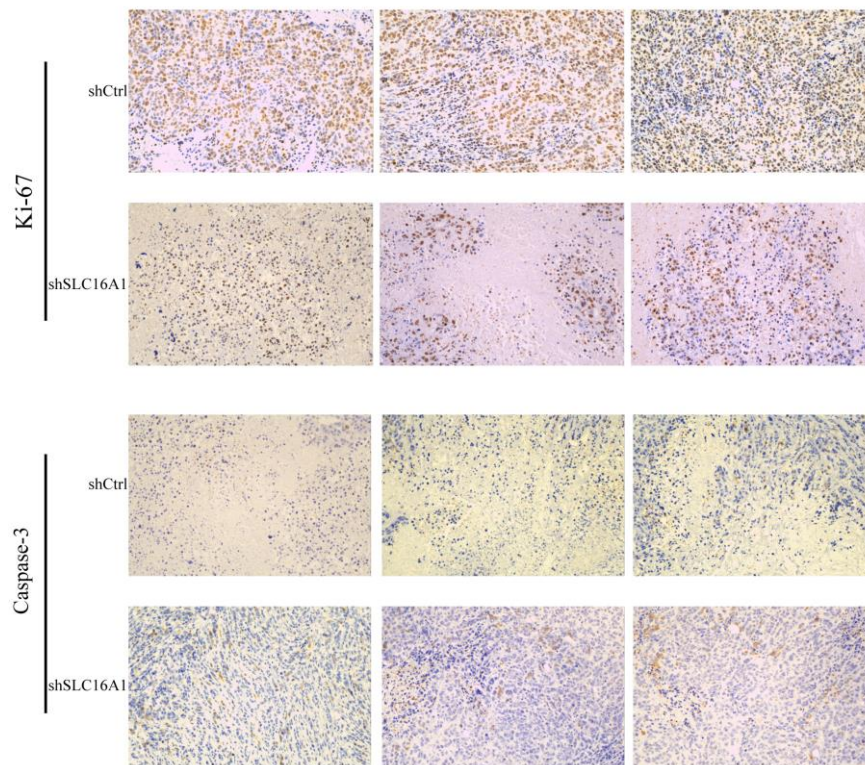


Figure S3. Representative figures of Ki-67 and Caspase-3 by IHC in sh-Ctrl and sh-SLC16A1 groups (100X).