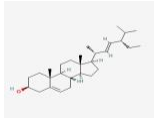
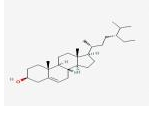
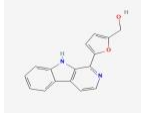
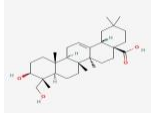
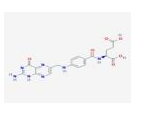
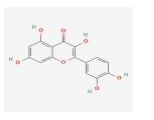
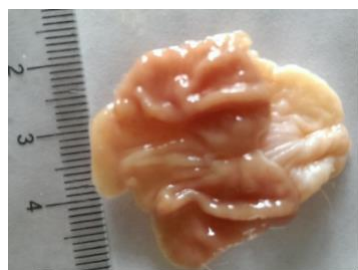


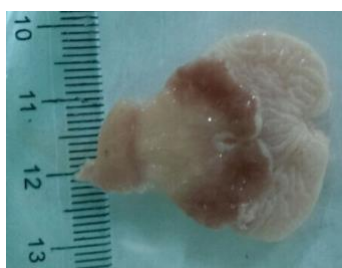
Supplementary

Table S1. Detailed information of shared active ingredients derived from YQHXD.

Mol ID/CAS	Mol name	Mol structure	Mol formula	OB/GIA	BBB	DL	Related Chinese medicine
MOL000449	Stigmasterol		C ₂₉ H ₄₈ O	43.83	1	0.76	DS SR SQ DG
MOL000358	beta-sitosterol		C ₂₉ H ₅₀ O	36.91	0.99	0.75	SR SQ DG
MOL002140	Perlolyrine		C ₁₆ H ₁₂ N ₂ O 2	65.95	0.15	0.27	DS CX
MOL000296	hederagenin		C ₃₀ H ₄₈ O ₄	36.91	0.96	0.75	HQ EZ
MOL000433	FA		C ₁₉ H ₁₉ N ₇ O 6	68.96	-2.59	0.71	HQ CX
MOL000098	quercetin		C ₁₅ H ₁₀ O ₇	46.43	-0.77	0.28	HQ SQ



Normol



Model

Figure S1 The images of gastric mucosa of PLGC rats in normal and model group.