

1

Supplementary Material

2 **Evodiamine Inhibits Colorectal Cancer Growth via RTKs**

3 **Mediated PI3K/AKT/p53 Signaling Pathway**

4 Qiao Zheng^{1,#}, Shengnan Jing^{1,#}, Lin Hu^{1,#,*}, Xiangrui Meng^{2,3,*}

5 ¹ Infectious Diseases, Hospital of Chengdu University of Traditional Chinese Medicine, Chengdu
6 611137, China

7 ² Traditional Chinese Medicine (TCM) Regulating Metabolic Diseases Key Laboratory of Sichuan
8 Province, Hospital of Chengdu University of Traditional Chinese Medicine, Chengdu 611137,
9 China

10 ³ Clinical School of Medicine, Chengdu University of Traditional Chinese Medicine, Chengdu
11 611137, China

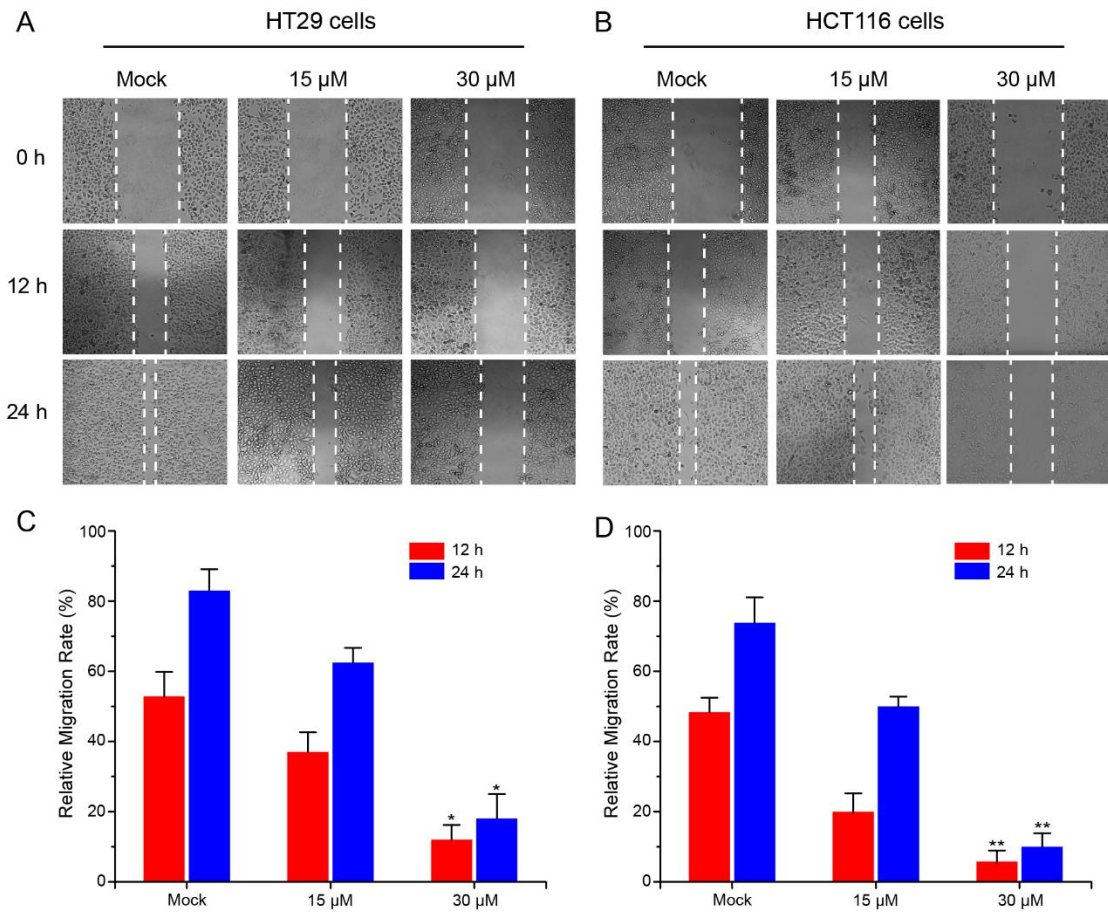
12 # These authors contributed equally to this work and share the first authorship.

13 * Corresponding author: Lin. Hu (276334022@qq.com), Xiangrui Meng (mengxr@cducm.edu.cn)

1

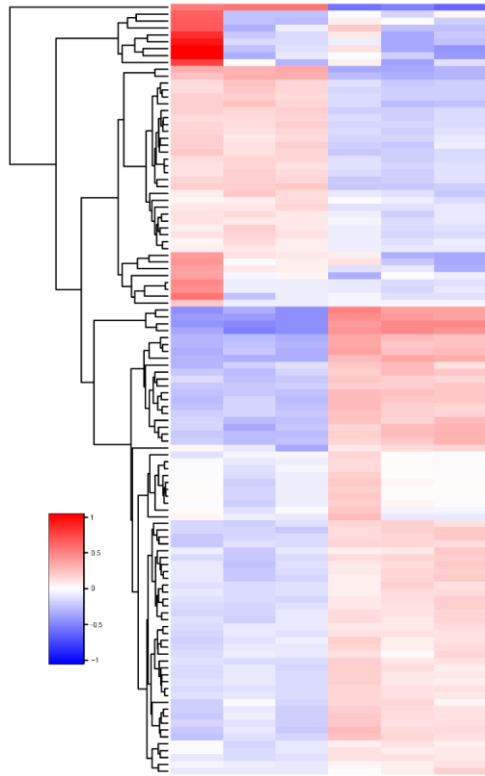
Table S1 Primer sequences in experiments

Gene name	Forward (5'-3')	Reverse (5'-3')
GAPDH	GCACAGTCAAGGCCGAGAAT	GCCTTCTCCATGGTGGTGAA
p53	CTGAGGTTGGCTCTGACTGT	TCAAAGCTGTTCCGTCCCAG
AKT1	TGGACTACCTGCACTCGGAGAA	TGGACTACCTGCACTCGGAGAA
PI3K	TCTTATTCAGACGCATTCCAC	TGTTCCCTCTTAGCACCCCTTTCG
EGFR	AACACCCTGGTCTGGAAGTACG	TCGTTGGACAGCCTTCAAGACC
PDGFR α	GACTTTCGCCAAAGTGGAGGAG	AGCCACCGTGAGTTCAGAACGC
PDGFR β	GAGAGGTCTTATGCCAGGACTC	TCAACAATGATCTCCCTGACC

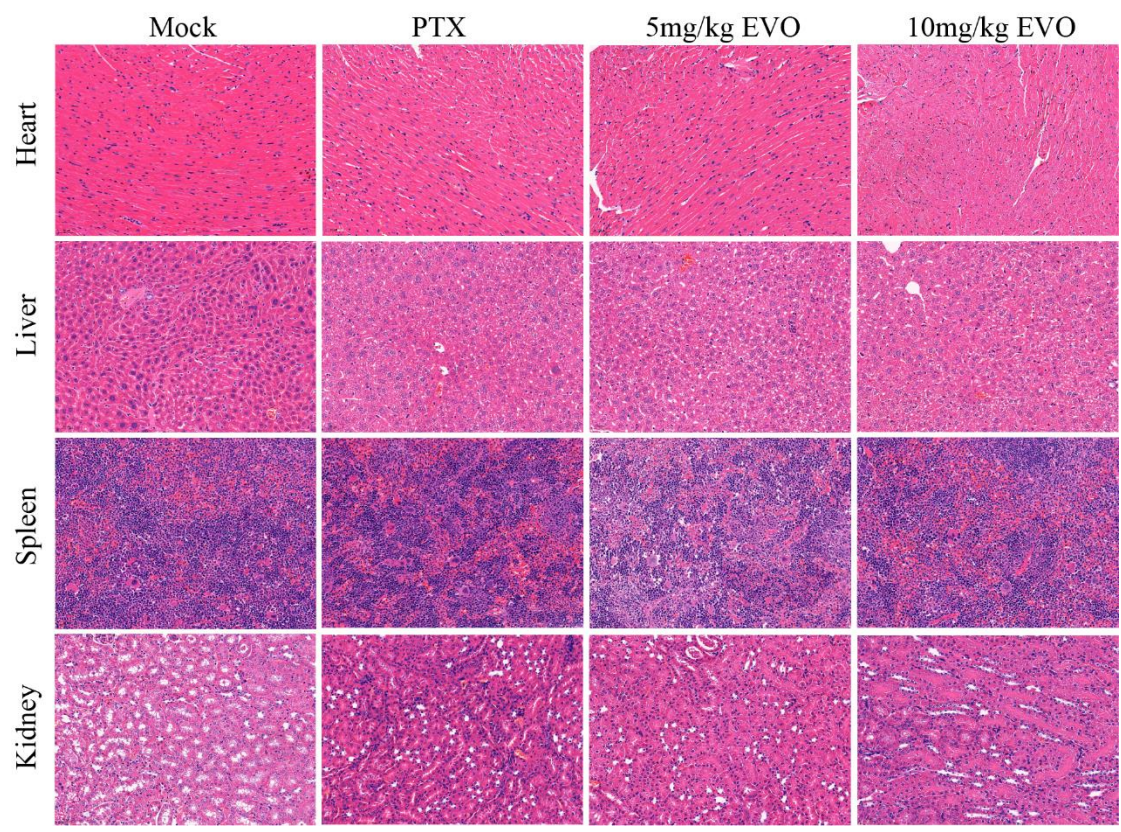


2

3 **Figure S1. EVO inhibits the lateral migration of colorectal cells.** Lateral migration
4 ability of HT29 cells (A) and HCT116 cells (B). Quantitative analysis of the lateral
5 migration ratio of HT29 cells (C) and HCT116 cells (D) after treatment with different
6 concentrations of EVO for 12h and 24 h. * P < 0.05, ** P < 0.01, and *** P < 0.001 vs
7 Mock.



1
2 Figure S2. Heat map analysis of differential genes.



3
4 Figure S3. HE *in vivo* tissues under different treatment methods.