

Supplementary figures and tables

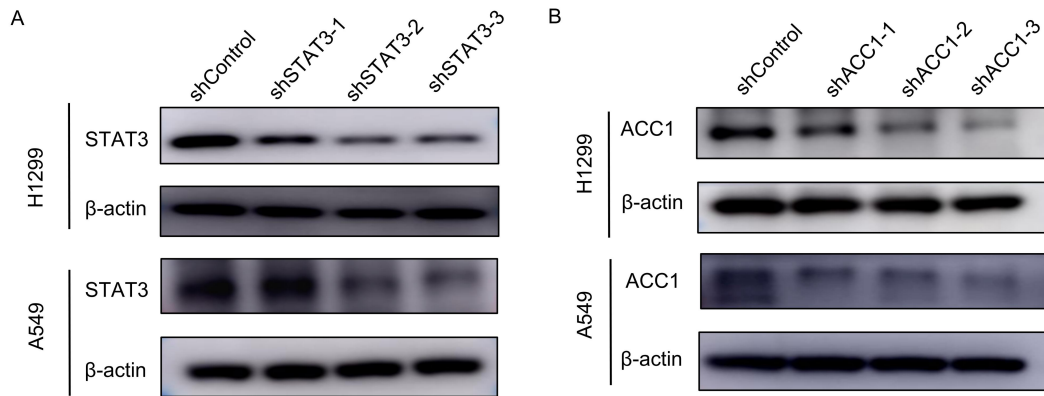


Fig.S1 A. The protein level of STAT3 was detected in STAT3 knockdown H1299 and A549 cells by western blot. **B.** The protein level of ACC1 was detected in ACC1 knockdown H1299 and A549 cells by western blot.

Supplementary Table S1. The sequence of indicated primers, shRNA used in this study.

Name		Sequence (5'-3')
qPCR primer		
STAT3	Forward	CTTTGAGACCGAGGTGTATCACC
	Reverse	GGTCAGCATGTTGTACCACAGG
ACC1	Forward	TTCACTCCACCTTGTCAGCGGA
	Reverse	GTCAGAGAAGCAGCCCATCAC
GAPDH	Forward	AGAAGGCTGGGGCTCATTG
	Reverse	AGGGGCCATCCACAGTCTTC
shRNA		
shSTAT3-1	Target Sequence	CGGAGAAGCATCGTGAGTGAG

shSTAT3-2	Target Sequence	AAATGAAAGTGGTAGAGAATC
shSTAT3-3	Target Sequence	TGGAAACAACCAGTCAGTGAC
shACC1-1	Target Sequence	GGTCACACCTGAAGACCTTAA
shACC1-2	Target Sequence	GCAGATCTTAGCGGACCAATA
shACC1-3	Target Sequence	GCTTTCAGATGAACAGAATTG

ChIP assay (Distance from ACC1, bp)

ACC1-prom-1755-1985	Forward	CCATCTCCACCCCTGTTG
	Reverse	CCTCAATTTGGGCCTCTG
ACC1-prom-1575-1773	Forward	GAGGACTGGGAGGATGGG
	Reverse	GCAACAGGGGTGGAGATG
ACC1-prom-1398-1593	Forward	GCCTCCGGGCTTTGCGTG
	Reverse	CCCCATCCTCCCAGTCC
ACC1-prom-1199-1416	Forward	CAGCCTGCCGCGTCAAG
	Reverse	GCACGCAAAGCCCGGAG
ACC1-prom-1063-1295	Forward	GCTGAGCGGGAAATGGC
	Reverse	CCTCTAGCGGGACTAGGGAG
ACC1-prom-862-1081	Forward	CGCAGGCTCCCGAGTTGT
	Reverse	TCGCCATTTCCCGCTCA
ACC1-prom-723-890	Forward	GAGACCACATTCTGACACCA
	Reverse	ACGTTGGCTCCACAACCTC
ACC1-prom-518-748	Forward	ACCCACCTCTGCTGAA
	Reverse	GGAAGTTGGTGTGAGAATGTG
ACC1-prom-322-534	Forward	GGAGGCAGAAGTTGCAGTG
	Reverse	TTCAGCAGAGGTGGGGTT
ACC1-prom-157-392	Forward	AGTCCCAGGTGGGCAGAT

	Reverse	TGAGATGGCGTTTCTTTCG
ACC1-prom-57-182	Forward	CAGTAAAGGATGCACAGTCAATA
	Reverse	CTCAGGTTATCTGCCACC
