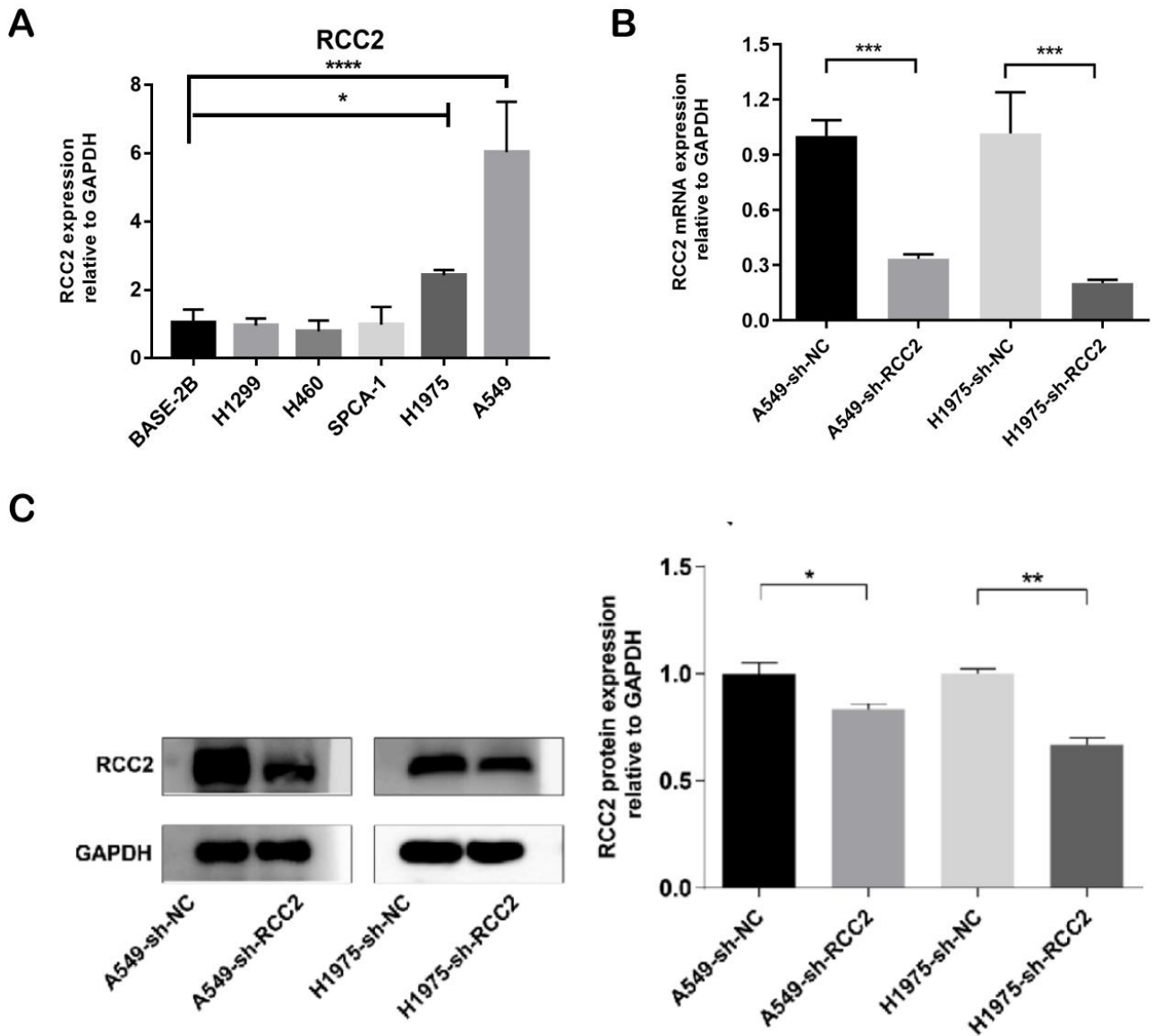


Comprehensive analysis of prognostic value and immune infiltration of Regulator of Chromosome Condensation 2 in lung adenocarcinoma

1 Hai Lin^{1,2,3+}, Guofu Lin^{1,2,3+}, Lanlan Lin^{1,2,3+}, Jiansheng Yang⁴, Dongyong Yang^{1,2}, Qinhui
2 Lin^{1,2}, Yuan Xu^{1,2*}, Yiming Zeng^{1,2*}

3



4

5 **Figure S1.** Construction of RCC2 knockdown stable transplanter cell line. (A) Detection of RCC2
6 mRNA expression level between normal airway epithelial cell (BASE-2B) and LUAD cell (H1299,
7 H460, SPCA-1, A549 and H1975). (* means $p < 0.05$, **** means $p < 0.0001$) (B-C) Verifying

- 8 RCC2 expression level by qRT-PCR and Western blot between sh-NC cells and sh-RCC2 cells. (*
9 means $p < 0.05$, ** means $p < 0.01$, *** means $p < 0.001$)