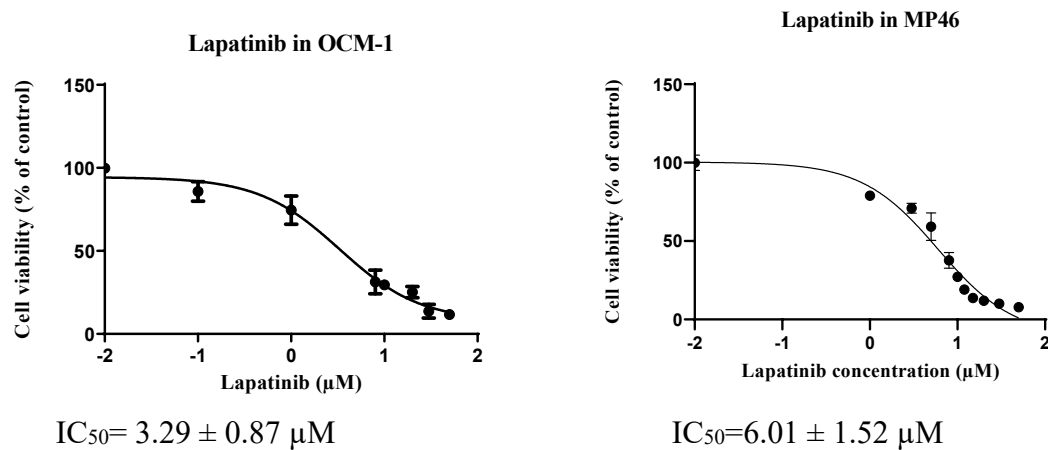
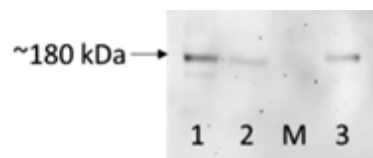


Supplementary data



Supplementary Figure 1. Anti-cancer activity of lapatinib in OCM-1 and MP46 UM cell lines.

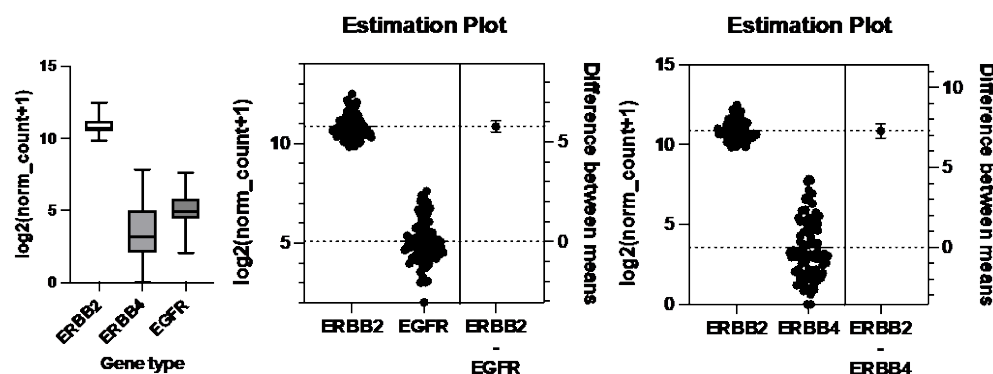
OCM-1 and MP46 cells were treated with lapatinib (0-50 μM) at 37°C for 24 h. Cell viability was assessed using MTT reduction assays. IC_{50} s of lapatinib in UM cell lines were estimated by non-linear regression (GraphPad Prism 7.0; San Diego, CA).



Supplementary Figure 2. Protein expression of Her2 in the patient tumor-derived UM primary cell lines.

The total cell lysate of the three patient tumor-derived UM primary cell lines was subject to western blot analysis. The blots were probed with anti-Her2 antibody.

Lanes: 1: cell line 1; 2: cell line 2; 3: cell line 3; M: protein marker.



Supplementary Figure 3 The expression of HER2 (ERBB2), EGFR and HER4 (ERBB4) in UM from the TCGA database.

The expression of EGFR and HER4 was compared with that of HER2 via the unpaired t-test (the middle and right panels).

HER2 vs EGFR: $p < 0.0001$, $t = 41.00$, $df = 158$, mean of HER2 = 10.87, mean of EGFR = 5.089

HER2 vs HER4: $p < 0.0001$, $t = 32.89$, $df = 158$, mean of HER2 = 10.87, mean of HER4 = 3.578