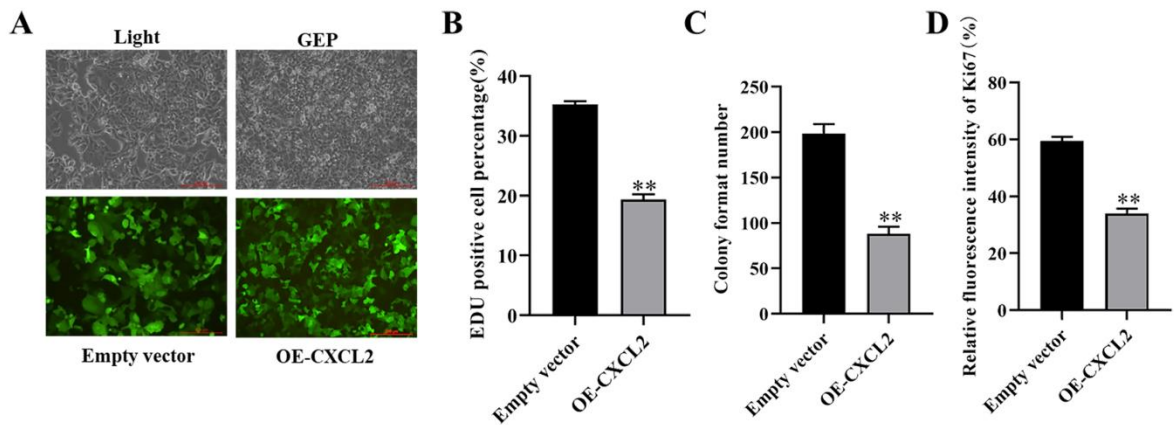


Supplementary Figure S1 (A) EDU positive cell rate, ** $P < 0.01$. (B) The results of cell cloning formation experiment were quantified, ** $P < 0.01$. (C) The positive rate of Ki67 protein was * $P < 0.05$.



Supplementary Figure S2 (A) Fluorescence detection of MCF-7 cells infected with lentivirus. (B) EDU positive cell rate, ** $P < 0.01$. (C) The results of cell cloning formation experiment were quantified, ** $P < 0.01$. (D) The positive rate of Ki67 protein was * $P < 0.05$.