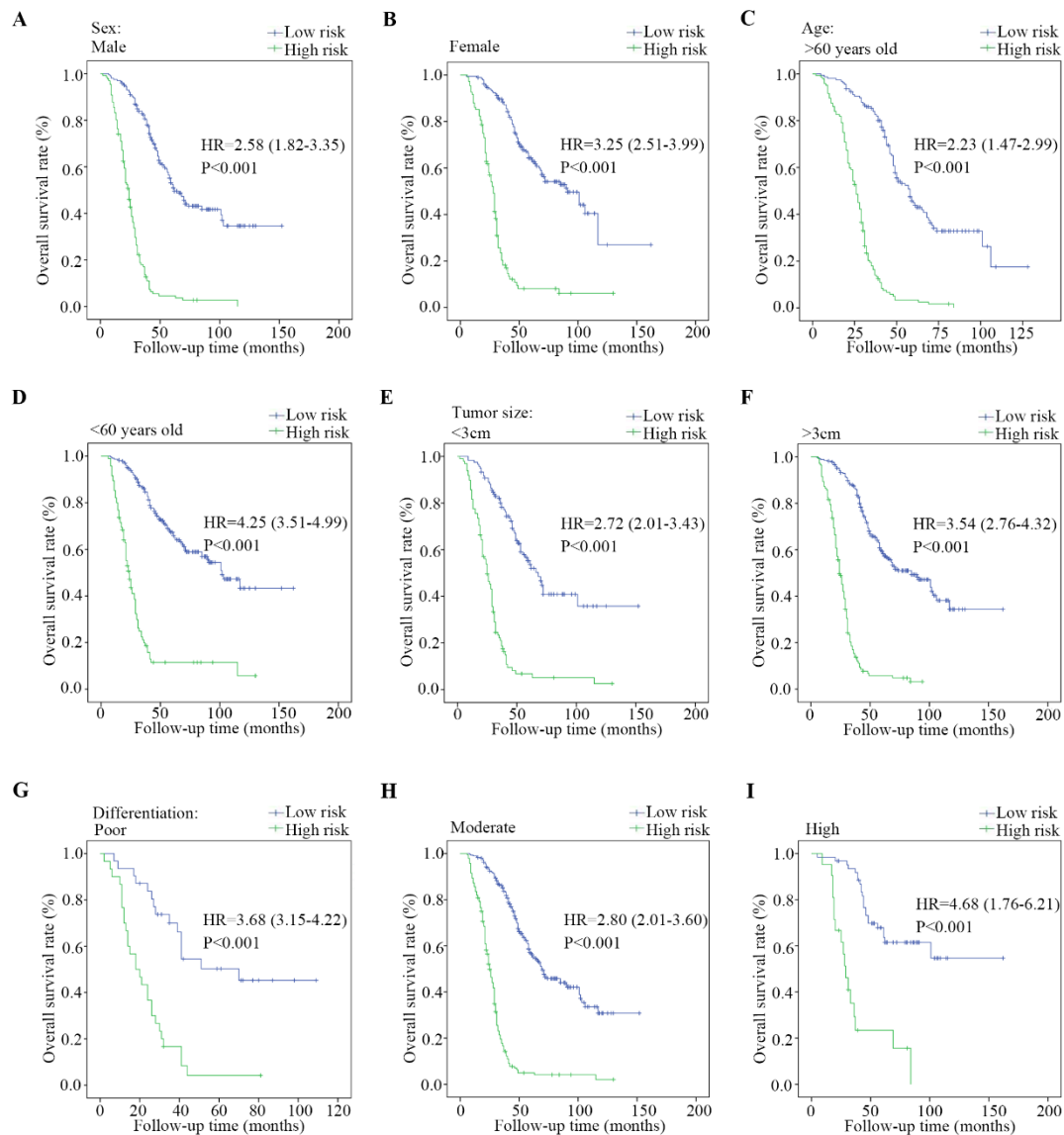


1

2

3 **Figure S1 Kaplan-Meier estimates of overall survival in the entire 626 enrolled**

4 **patients based on the expression level of DVL3. HR, hazard ratio.**



5

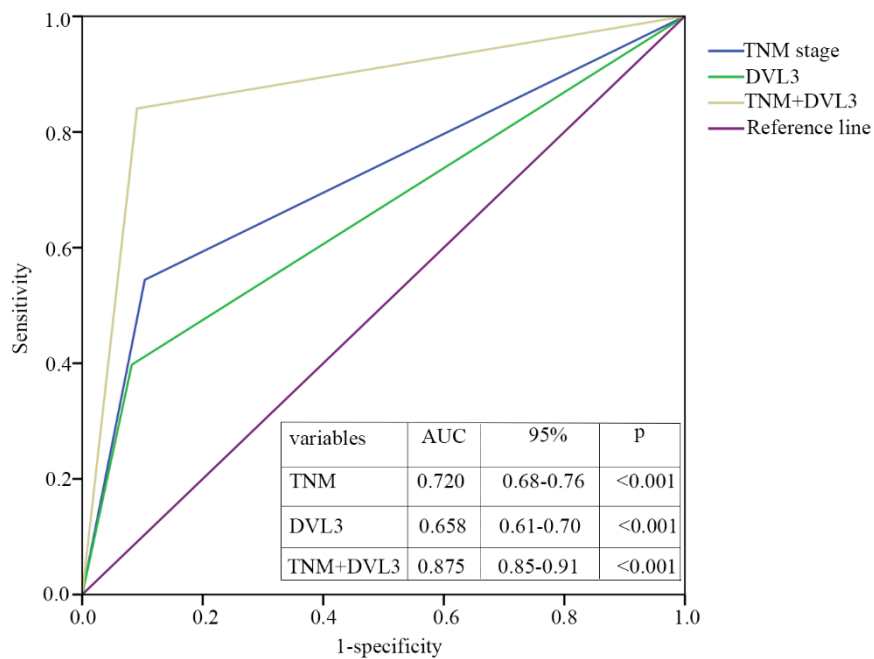
6

7 **Figure S2 The survival analysis of 626 patients according to clinical characteristics**

8 **was stratified.** (A, B) sex, (C, D) age, (E, F) tumor size, (G, H, I) the degree of

9 differentiation. The survival analysis was performed via the Kaplan-Meier method, and

10 the survival rates were compared with a log-rank test. HR, hazard ratio.



11

12 **Figure S3 Time-dependent ROC curves were used to evaluate the sensitivity and**  
 13 **specificity of DVL3 for predicting overall survival in PDGN-LUAD patients. The**  
 14 **entire cohort of 626 patients. ROC, receiver operator characteristic; AUC, area under**  
 15 **the curve; CI, confidence interval.**