

1 **Supplementary Table 1. Response rate according to the C2D1/Baseline ratio**

	Total (n=52)	No change or <1.5 (n=26)	1.5-2.0 fold increase (n=11)	≥2.0 fold increase (n=15)	P-value
CR	3(5.8%)	1(3.8%)	1(9.1%)	1(6.7%)	0.673
PR	26(50.0%)	14(53.8%)	6(54.5%)	6(40.0%)	
SD	19(36.5%)	10(38.5%)	3(27.3%)	6(40.0%)	
PD	4(7.7%)	1(3.8%)	1(9.1%)	2(13.3%)	

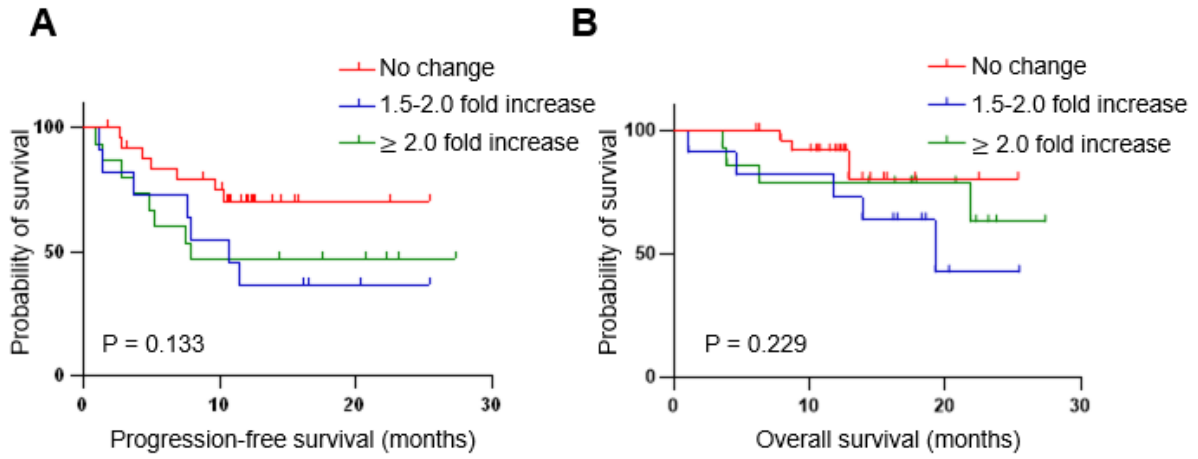
2

3

4

5 **Supplementary figure 1. Survival outcomes according to IL-10 changes.**

6 PFS (A) and OS (B) of the patient with advanced RCC according to the C2D1/Baseline: No  
7 change or <1.5 fold (n=26), 1.5-2.0 fold increase (n=11), and  $\geq 2.0$  fold increase (n=15). P-  
8 values were calculated using the log-rank test.



9

10