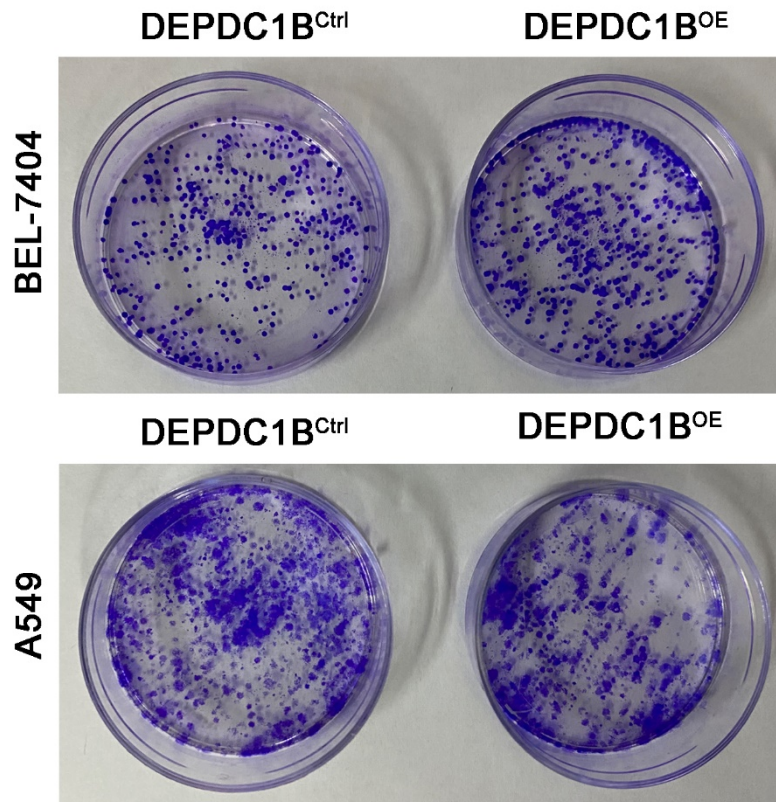
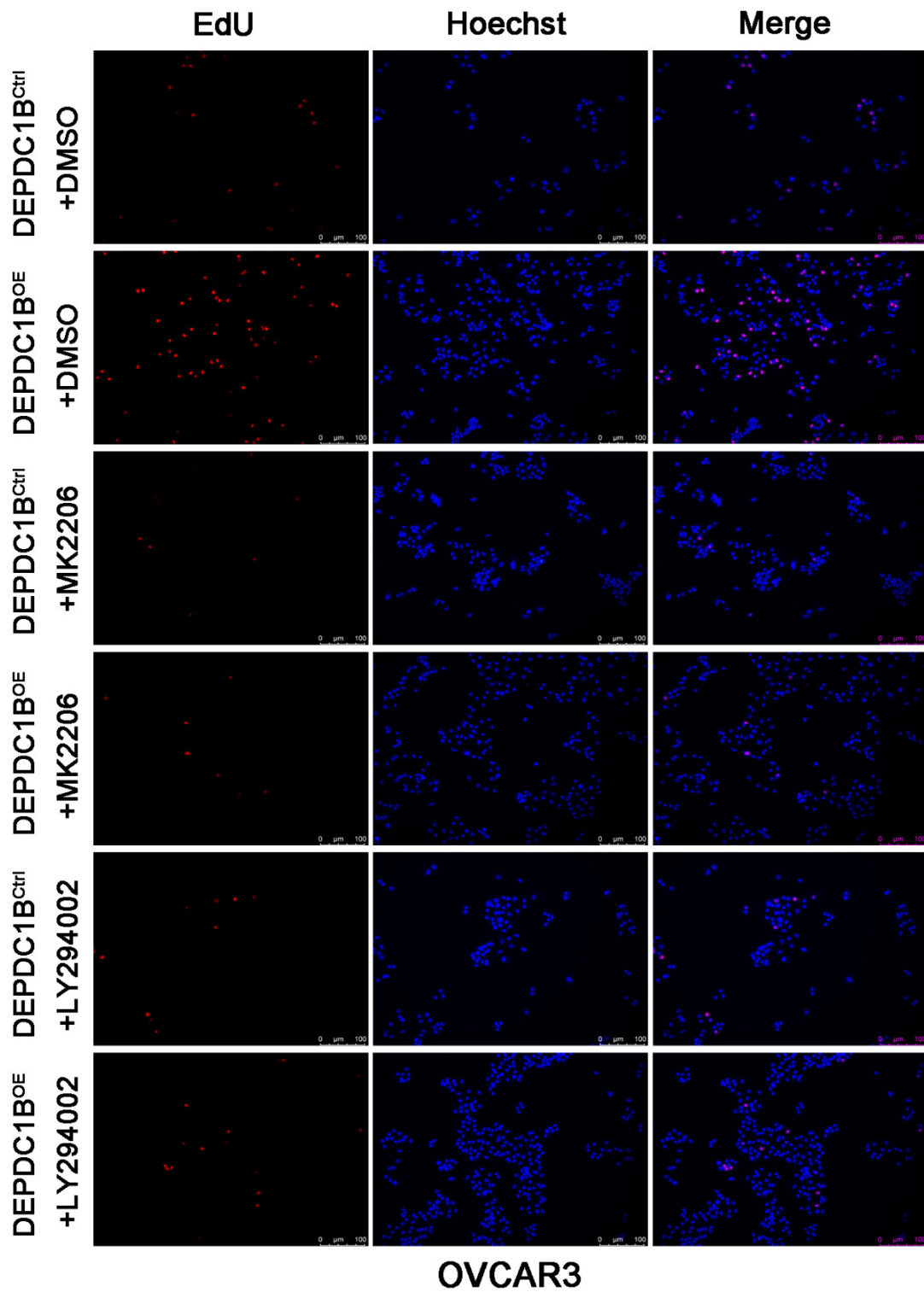


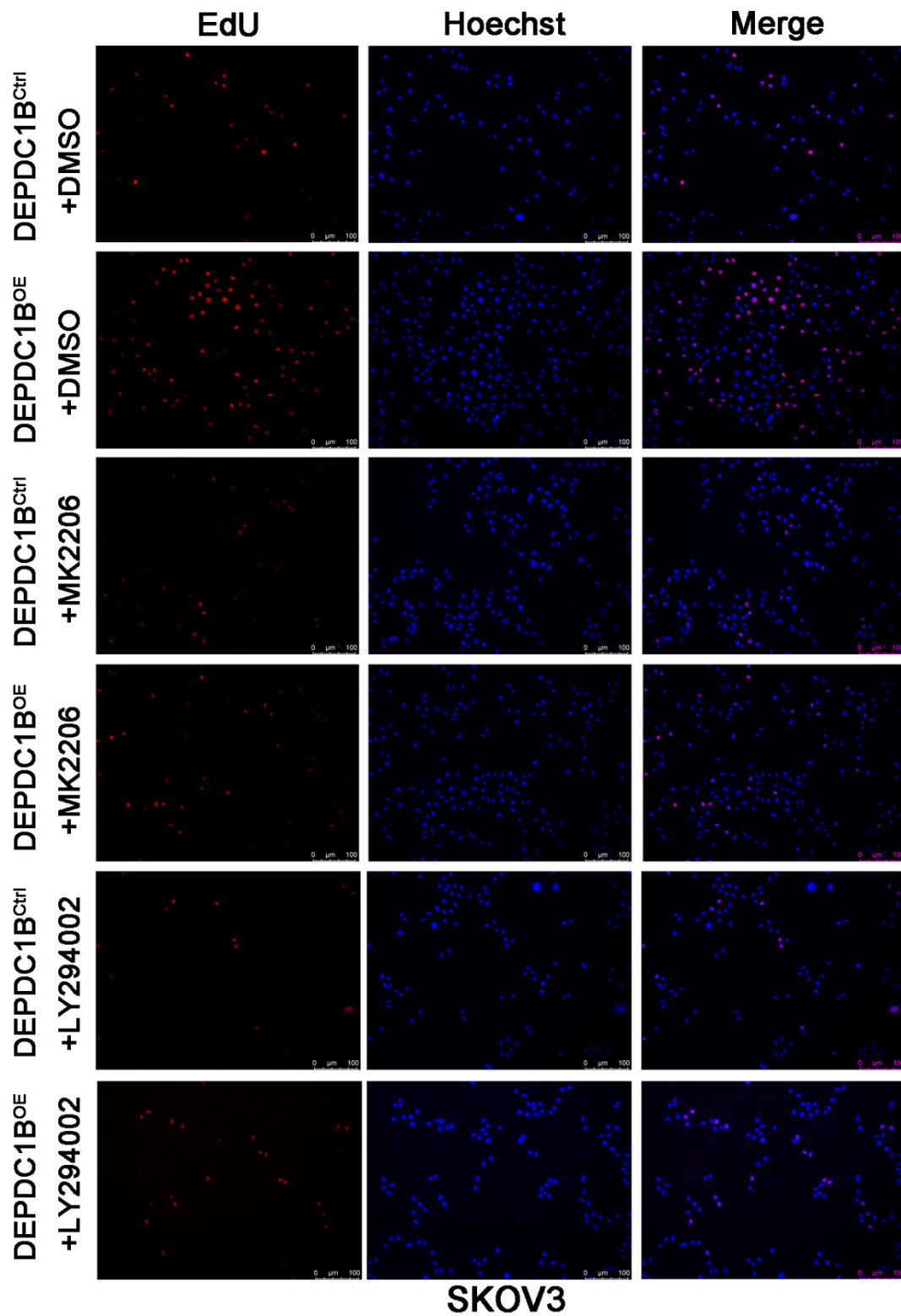
**Supplementary Figure 1** Representative images from EdU cell proliferation assay in DEPDC1B<sup>OE</sup> and DEPDC1B<sup>Ctrl</sup> SKOV3 and OVCAR3 cells.



**Supplementary Figure 2** Representative images from colony formation assay in DEPDC1B<sup>OE</sup> and DEPDC1B<sup>Ctrl</sup> BEL-7404 and A549 cells.



**Supplementary Figure 3** Representative images from EdU cell proliferation assay in DEPDC1B<sup>OE</sup> and DEPDC1B<sup>Ctrl</sup> OVCAR3 cells treated with MK-2206 or LY294002.



**Supplementary Figure 4** Representative images from EdU cell proliferation assay in DEPDC1B<sup>OE</sup> and DEPDC1B<sup>Ctrl</sup> SKOV3 cells treated with MK-2206 or LY294002.