

Table S1 Antibodies used in western blotting and IHC

Primary antibodies	Dilution in WB	Source species	Company	Catalog No.
CDCA8	1:1000	Rabbit	abcam	ab70910
GAPDH	1:3000	Rabbit	Bioworld	AP0063
BIRC5	1:1000	Rabbit	abcam	ab469
CDK1	1:2000	Rabbit	abcam	ab133327
E2F1	1:1500	Rabbit	abcam	ab179445
PLK1	1:1000	Mouse	abcam	ab17057
SKP2	1:1000	Rabbit	abcam	ab183039
DYKDDDDK Tag*	1:50/1:1000	Rabbit	CST	14793

*Notes: DYKDDDDK Tag binds to same epitope as Sigma's Anti-FLAG® M2 Antibody

Primary antibodies	Dilution in IHC	Source species	Company	Catalog No.
CDCA8	1:30	Rabbit	abcam	ab70910
Ki67	1:200	Rabbit	abcam	ab16667
CDK1	1:100	Rabbit	sigma	HPA003387

Secondary antibody	Dilution	Company	Catalog No.
HRP Goat Anti-Rabbit IgG (WB)	1:3000	Beyotime	A0208
HRP Goat Anti-Mouse IgG (WB)	1:3000	Beyotime	A0216

HRP Goat Anti-Rabbit IgG
(IHC)

1:200

Abcam

Ab111909

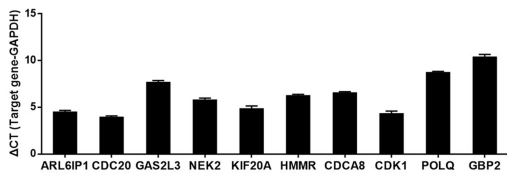
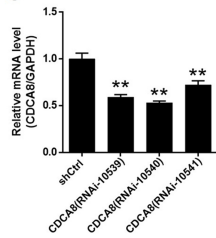
Table S2 The target sequences and shRNA sequences

Gene	No.	Target sequence (5'-3')	shRNA sequences (5'-3')
CDCA8	Pbr10539-a	GTGGAAATACGAATCAAGCAA	CcggGTGGAAATACGAATCAAGCAActcgagTTGCTTGATTTCGATTTCCACTTTTTg
	Pbr10539-b	GTGGAAATACGAATCAAGCAA	aattcaaaaaGTGGAAATACGAATCAAGCAActcgagTTGCTTGATTTCGATTTCCAC
CDCA8	Pbr10540-a	GTGGAAATACGAATCAAGCAA	ccggAGATGAAATGATAGTGAAGActcgagTCTTCCACTATCATTTTCATCTttttg
	Pbr10540-b	GTGGAAATACGAATCAAGCAA	aattcaaaaaAGATGAAATGATAGTGAAGActcgagTCTTCCACTATCATTTTCATCT
CDCA8	Pbr10541-a	GCGGAGAGAGCCTGCGATTAT	CcggGCGGAGAGAGCCTGCGATTATctcgagATAATCGCAGGCTCTCTCCGCTTTTTg
	Pbr10541-b	GCGGAGAGAGCCTGCGATTAT	aattcaaaaaGCGGAGAGAGCCTGCGATTATctcgagATAATCGCAGGCTCTCTCCGC
CDK1	Pbr10545-a	TTCCATGGATCTGAAGAAATA	CcggTTCCATGGATCTGAAGAAATAActcgagTATTTCTTCAGATCCATGGAATTTTTg
	Pbr10545-b	TTCCATGGATCTGAAGAAATA	aattcaaaaaTTCCATGGATCTGAAGAAATAActcgagTATTTCTTCAGATCCATGAA
CDK1	Pbr10546-a	AGACTAGAAAGTGAAGAGGAA	CcggAGACTAGAAAGTGAAGAGGAAActcgagTTCCTCTTCACTTTCTAGTCTTTTTTg
	Pbr10546-b	AGACTAGAAAGTGAAGAGGAA	aattcaaaaaAGACTAGAAAGTGAAGAGGAAActcgagTTCCTCTTCACTTTCTAGTCT
CDK1	Pbr10547-a	ATGGAGTTGTGTATAAGGGTA	CcggATGGAGTTGTGTATAAGGGTActcgagTACCCTTATACACA ACTCCATTTTTTg
	Pbr10547-b	ATGGAGTTGTGTATAAGGGTA	aattcaaaaaATGGAGTTGTGTATAAGGGTActcgagTACCCTTATACACA ACTCCAT

Table S3 Primers used in qPCR

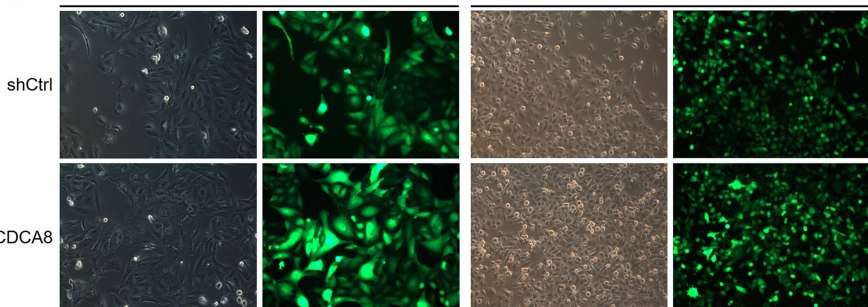
Gene	Forward primer sequence (5'-3')	Reverse primer sequence (5'-3')
ARL6IP1	ATGGGGAGAAGTGATGCTGATG	CGCTAGAATGGGAACAAGGTAGTC
CDC20	AATGGAGCAGCCTGGGGAATA	CGGGCAGAGTGACTGGTCATAT
GAS2L3	CCCAGCGTGCCAGTTAGTATTC	GCCTGCGGTTTCTTCGTTATG
NEK2	GAAGGAATGCCACAGACGAAGT	CAAGCAGCCCAATGACCAGATA
KIF20A	GGCCGTTCTGCATGATTGT	TGTCTGCCTTAGCCCCTTTCT
HMMR	TTAACAAGTGGCGTCTCCTCTATG	CTGAGCTGCACCATGTTTCATTC
CDCA8	AGACAGGCAGAACCTCCTCAAG	TTCCTCCAAGGGCGAAGTAGTC
CDK1	TCAGGATGTGCTTATGCAGGATTC	TCCATGTACTGACCAGGAGGGA
POLQ	TCCTACACCCATTCCAACATCTG	GTCTTTGAACCCATTTCTACTCCC
GBP2	TGATGACTACTTGGAGCTTTCGC	GGAATGGCTGAGGATGTAGGAAC
GAPDH	TGACTTCAACAGCGACACCCA	CACCCTGTTGCTGTAGCCAAA
FANCD2	GGCTTGACAGAGTTGTGGATG	TAGGATCTCAGGTAGGCTGGTG
CDC25A	TGGAAGTACAAAGAGGAGGAAGAG	GCCAGGGATAAAGACTGATGAAG
CDCA3	CACGGACACCTATGAAGACCA	GTTTGGAGGGGAACCTCAGTCT
PLK1	AGAGGAGGAAAGCCCTGACT	TAACTCGGTTTCGGTGCAGG

BIRC5	TCTCAAGGACCACCGCATCT	TTTGCATGGGGTCGTCATCT
SFRP1	CGTGGGCTACAAGAAGATGG	GAAGAGCGAGCAGAGGAAGA
FOXM1	AGTCCCGGTGAACCAGTCA	ACACCACCTGTTCCCCAAA
CDK1	TCAGGATGTGCTTATGCAGGATTC	TCCATGTACTGACCAGGAGGGA
KIF2C	AGATGGAAGCCTGCTCTAACGG	GCTGGACATCTGGGAAGACAGT
BRCA1	TGGCAACATACCATCTTCAACC	TGTCAATTCTGGCTTCTCCCT
CCNE2	AGCTGGTCTGGCGAGGTTTT	GGCCTGGATTATCTGGGCTTC
AURKB	CATGGAGGAGTTGGCAGATG	CCTTGAGCCCTAAGAGCAGAT
CDK2	ATCGCAAATGCTGCACTACG	GGTCACATCCTGGAAGAAAGG
CHEK1	TTGGCTTGGCAACAGTATTTCG	CCAGCGAGCATTGCAGTAAGT
LEF1	AATAAAGTGCCCGTGGTGC	GAGAAAAGTGCTCGTCACTGTAAG
CBX5	CTTCAGAGGATGAGGAGGAGTATG	GCTCAGGGCAATCCAAGTTTT
SKP2	ATAGAAGTGTCACCCTCCACG	CACCCAGAAAGGTTAAGTCGC
E2F1	CACTTTCGGCCCTTTTGCTC	GTGCTCTCACCGTCCTACAC
RFC3	TGATGCTGGAAATAGTGACCG	CGCCAAGCACCTACTACGAATA
RRM1	GAAAGAGCAACCAGCAGAACC	GGGAAGCCAAATTACAAACAGC

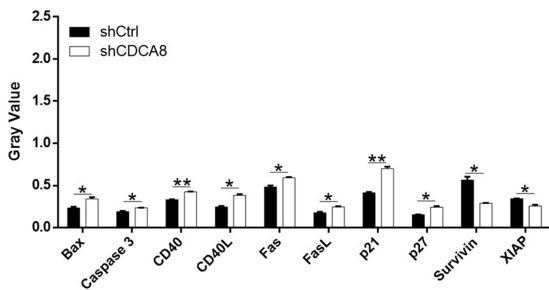
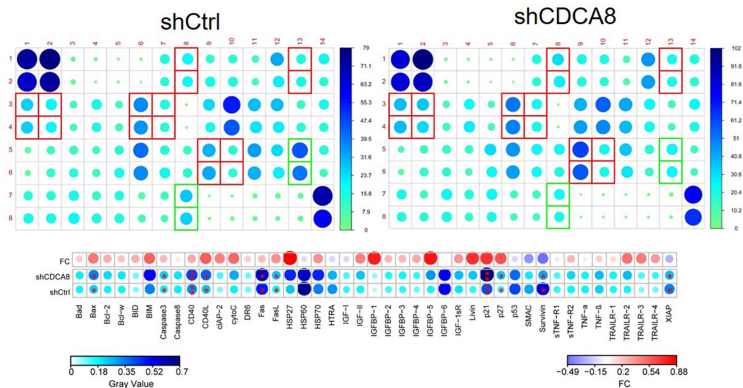
A**C****B**

B-CPAP

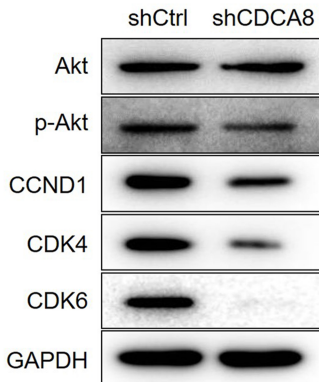
TPC-1

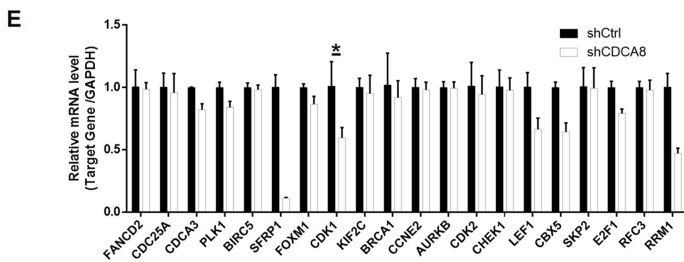
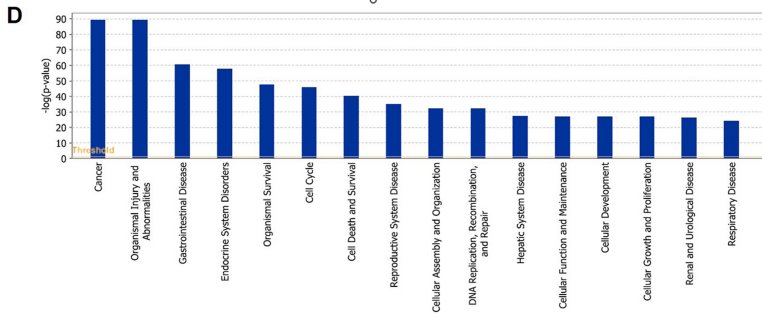
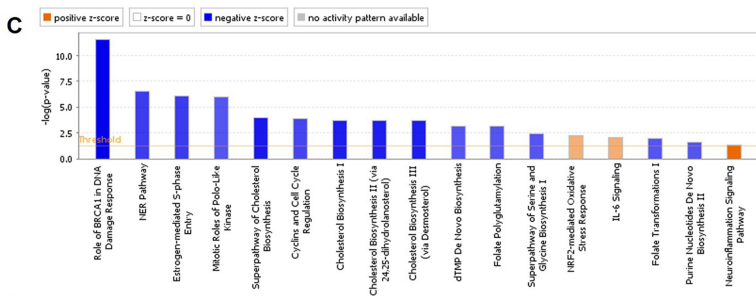
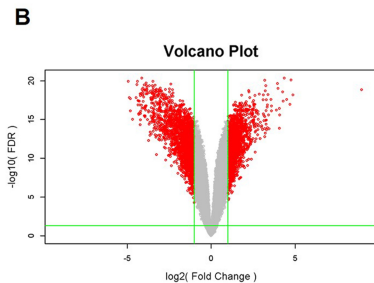
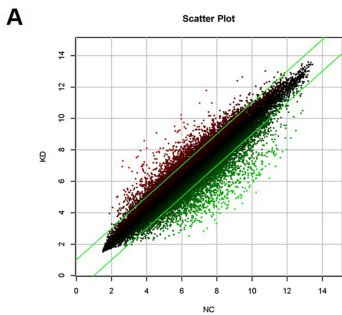


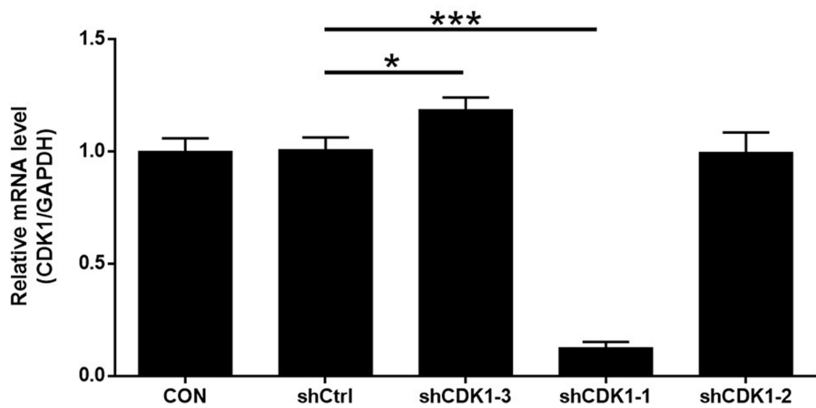
A



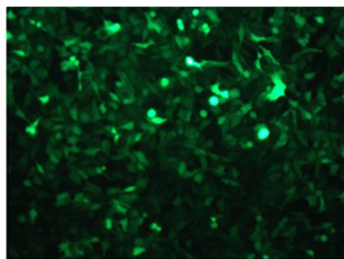
B



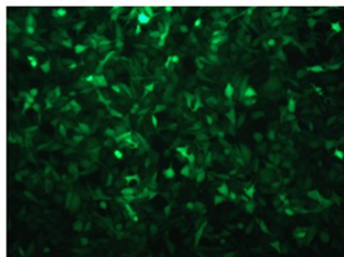




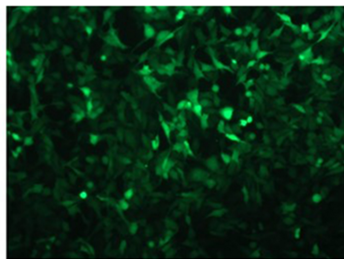
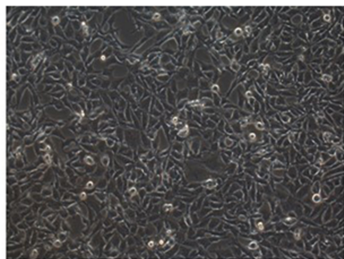
Control



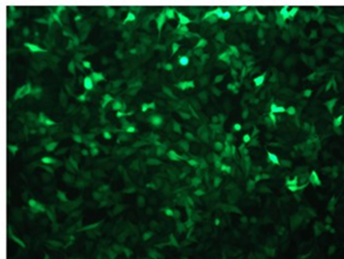
CDK1



shCtrl



shCDK1



0 h

4 h

8 h

Control

27.6

19.7

14.5

CDK1

27.6

18.8

13.0

0 h

4 h

8 h

shCtrl

27.5

20.2

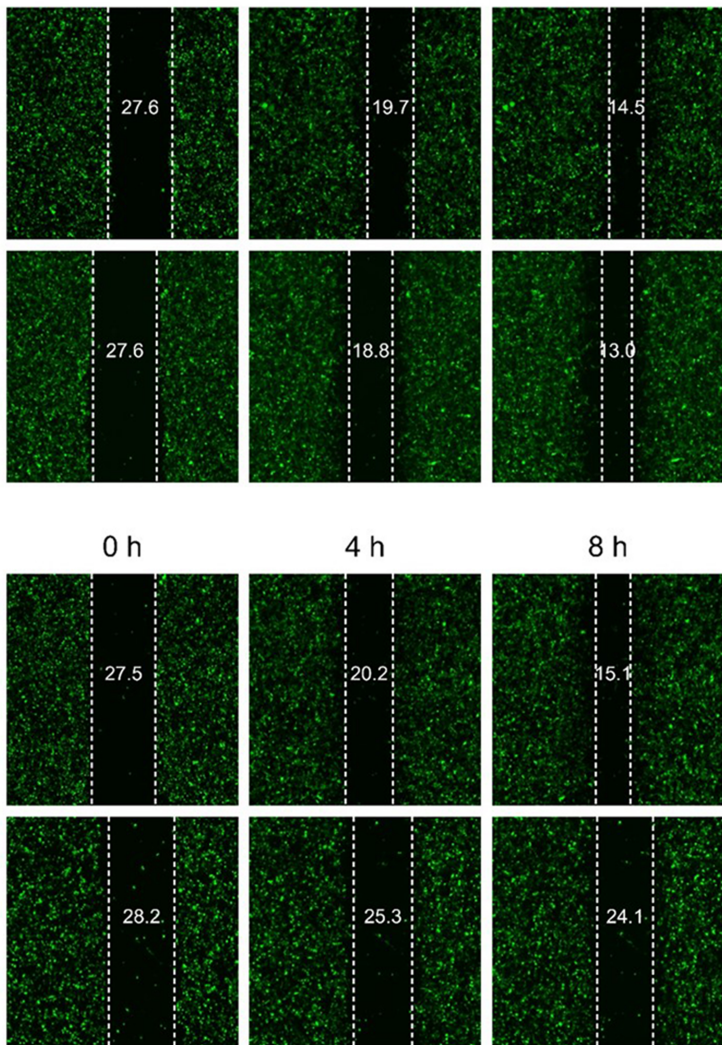
15.1

shCDK1

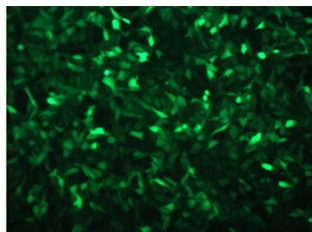
28.2

25.3

24.1



NC(KD+OE)



CDK1+shCDCA8

