

Figure S1

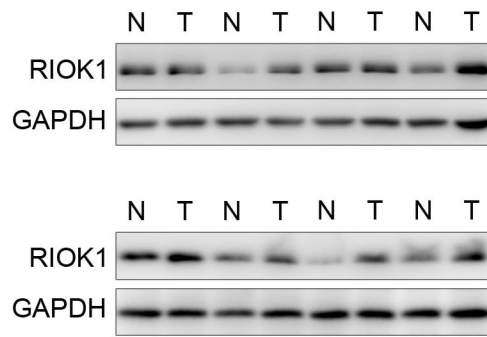
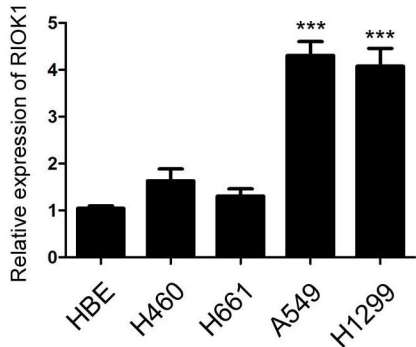


Figure S2

A



B

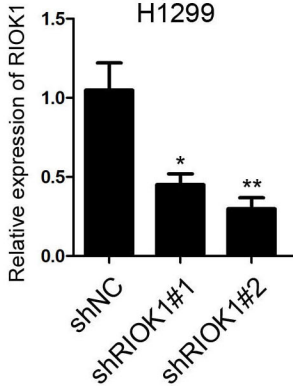
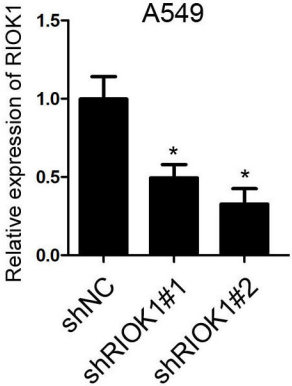
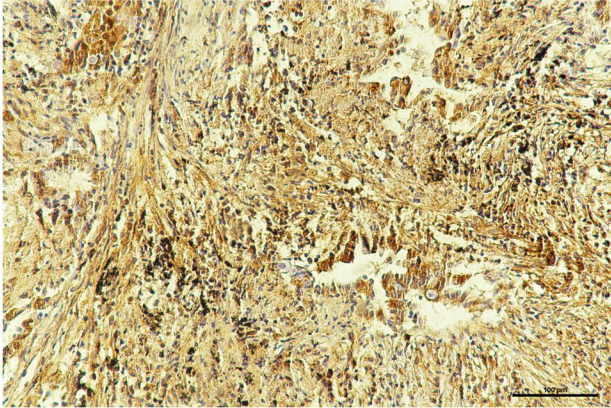
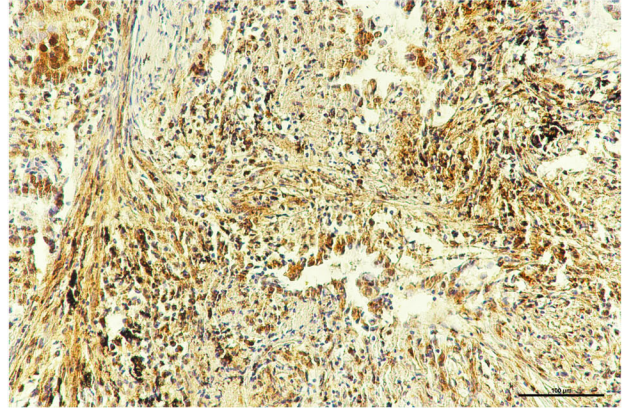


Figure S3

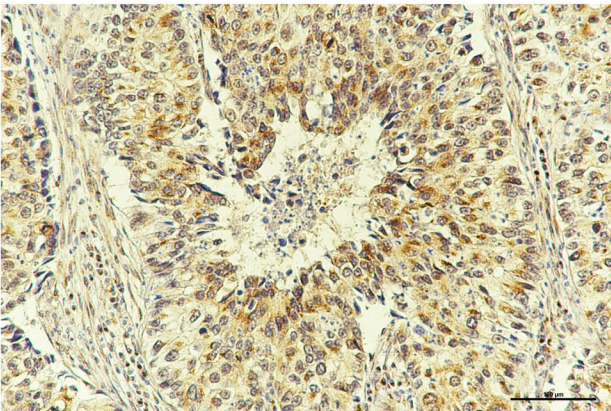
RIOK1



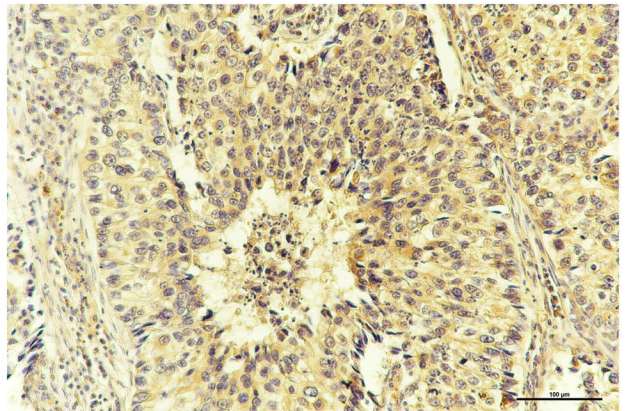
p-AKT



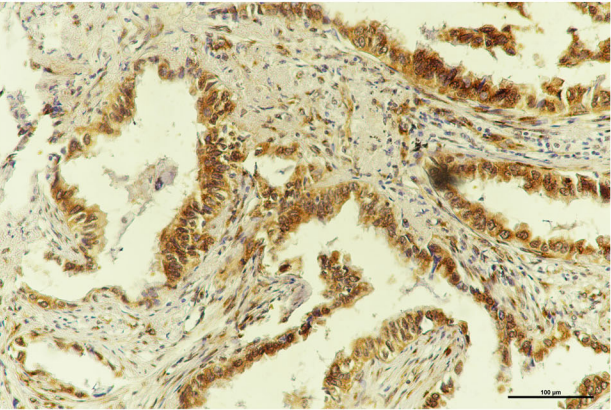
RIOK1



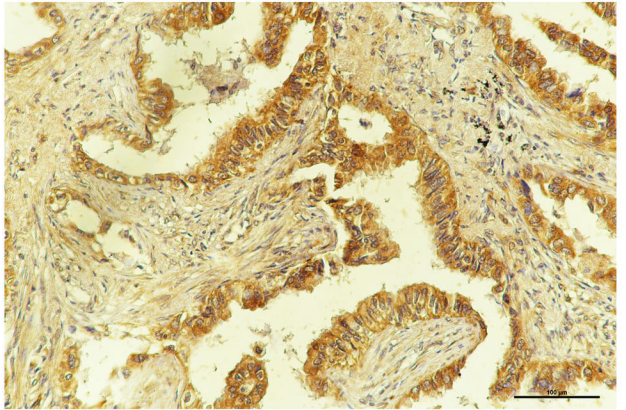
Cyclin B1



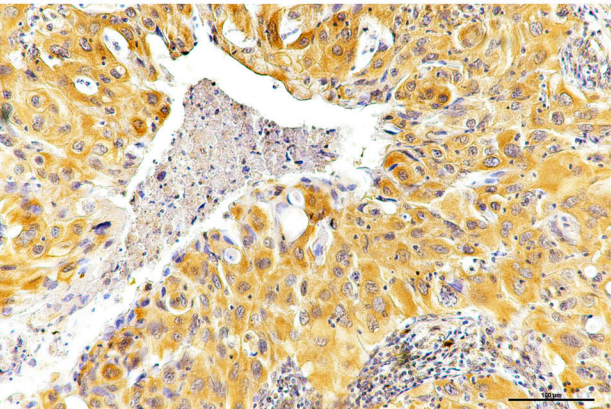
RIOK1



MMP2



RIOK1



Twist

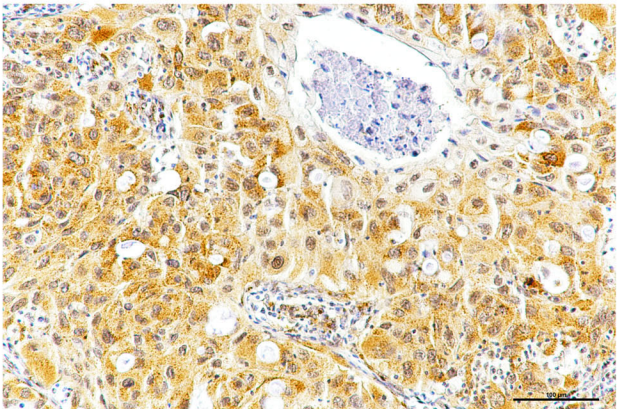


Table 2 Correlation between riok1 and p-AKT, MMP2, CyclinB1 and Twist protein expression in patients with NSCLC

		Expression of RIOK1			
		Low (%)	High (%)	χ^2 -value	<i>p</i> -value
Expression of p-AKT	Low (%)	34 (77.27)	10 (22.73)	46.32	<0.001
	High (%)	9 (13.24)	59 (86.76)		
Expression of MMP2	Low (%)	30 (50)	30 (50)	7.36	0.007
	High (%)	13 (25)	39 (75)		
Expression of CyclinB1	Low (%)	27 (45.76)	32 (54.24)	2.86	0.91
	High (%)	16 (30.19)	37 (69.81)		
Expression of Twist	Low (%)	35 (74.47)	12 (25.53)	44.56	<0.001
	High (%)	8 (12.31)	57 (87.69)		

Supplementary Figure legends

Figure S1. RIOK1 expression in NSCLC and adjacent tissues.

The expression of RIOK1 in NSCLC and adjacent tissues was detected by Western blot.

Figure S2. RIOK1 expression in NSCLC cell lines.

(A) Quantification of RIOK1 protein expression in HBE and four non-small cell lung cancer (NSCLC) cell lines. Results from three independent experiments, ***P < 0.001.

(B) Quantification of RIOK1 protein expression in A549 and H1299 cell lines was detected by Western blot. Results from three independent experiments, *P < 0.05, **P < 0.01.

Figure S3. Immunohistochemical analyses of RIOK1, p-AKT, MMP2, Cyclin B1, and Twist in NSCLC.

The protein expression between RIOK1 and p-AKT, MMP2, Cyclin B1, and Twist in the same NSCLC sample.