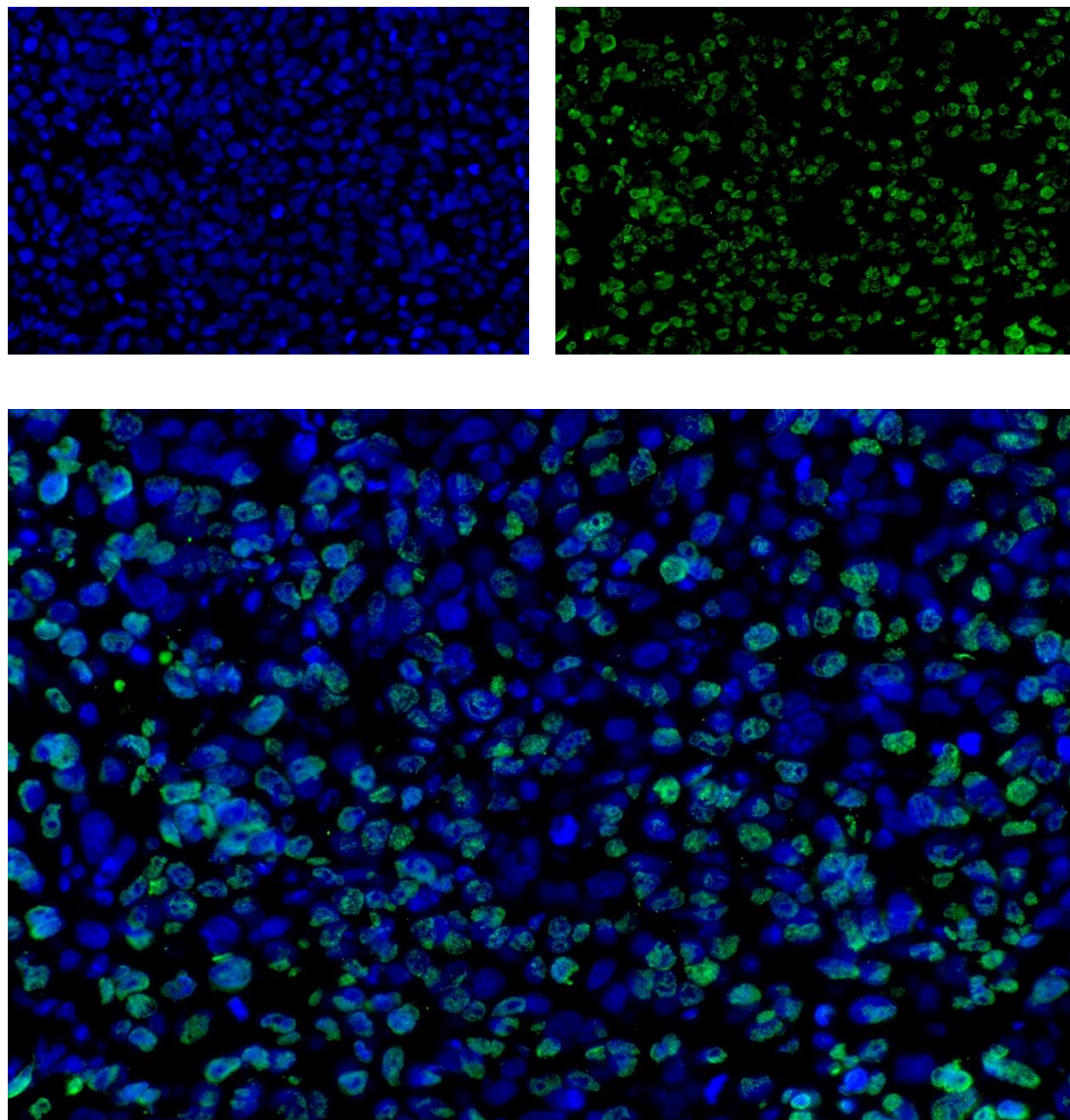
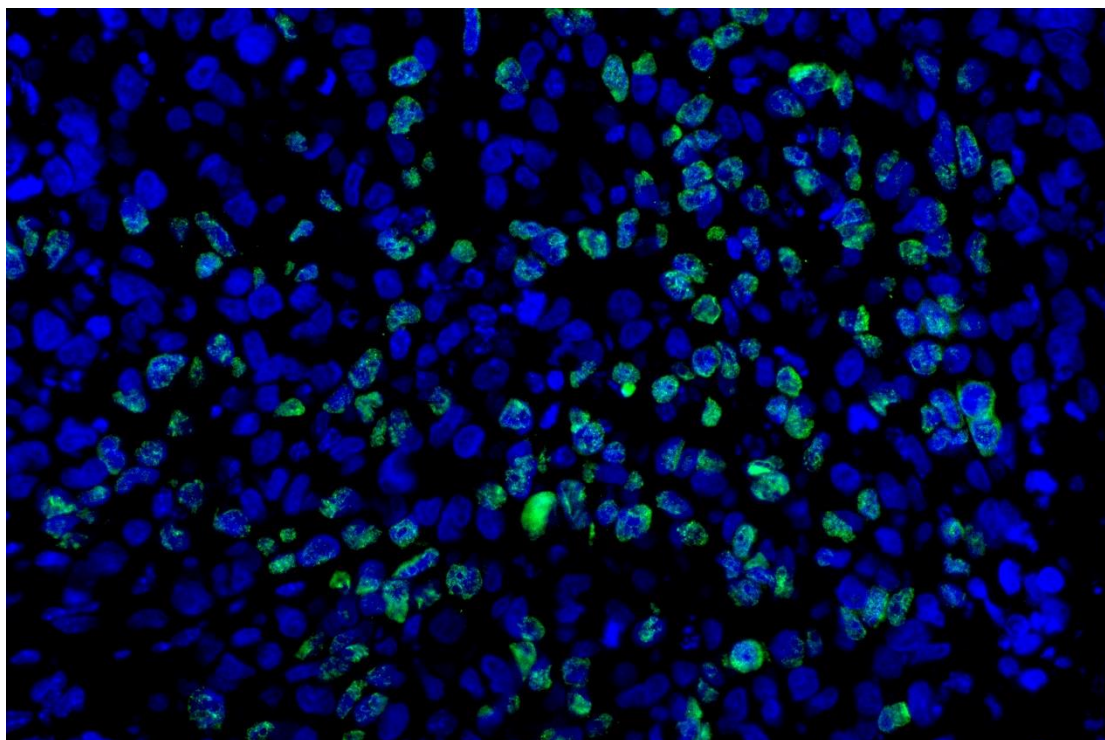
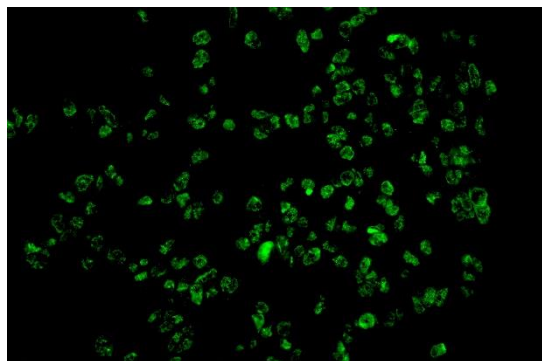
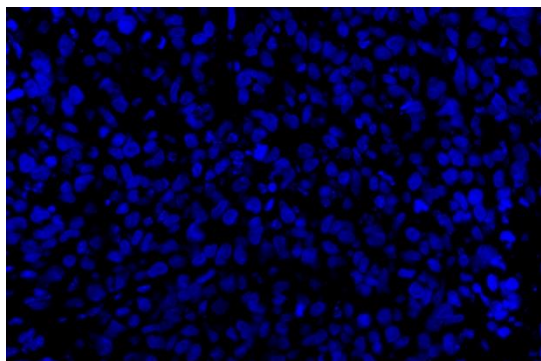


Figure S1. Representative images of PCNA and Ki67 staining of xenograft tumors tissues (400X).

PCNA SiNC

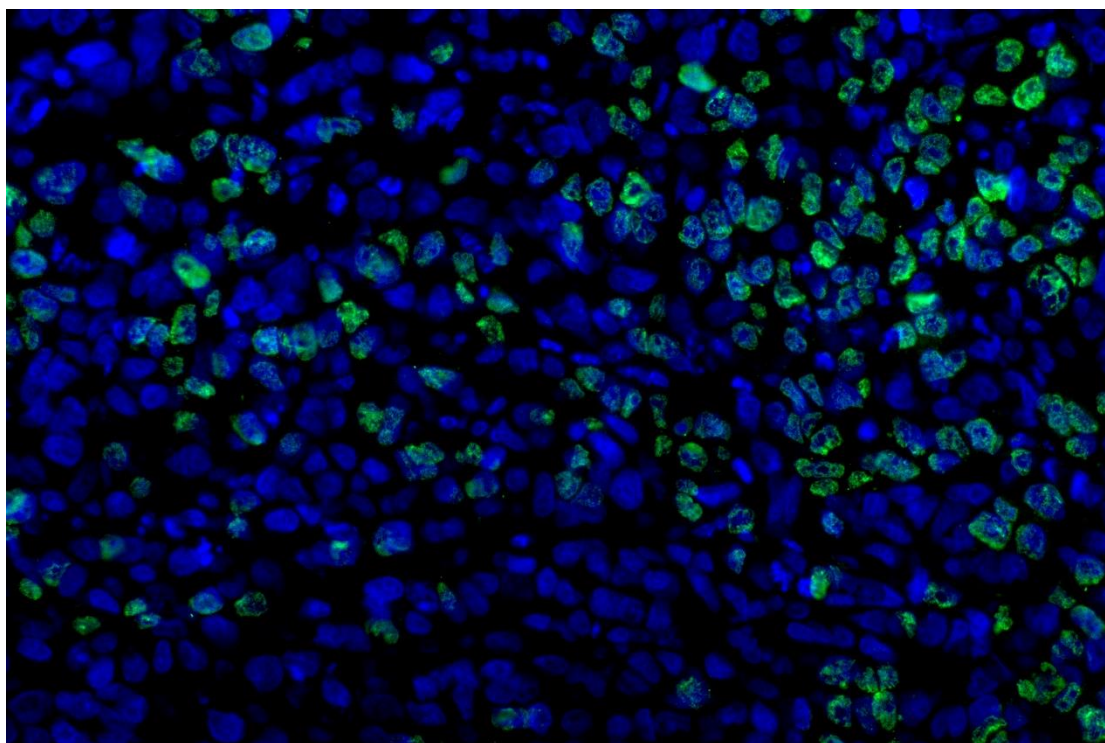
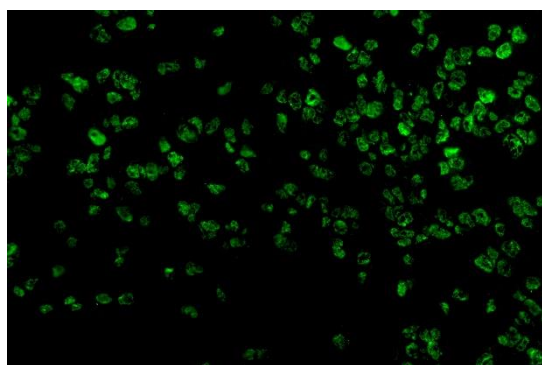
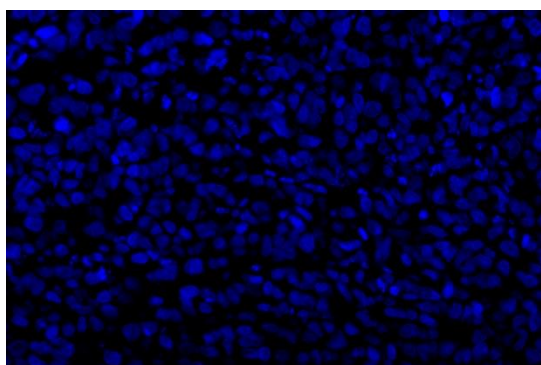


PCNA siCPNE3-1

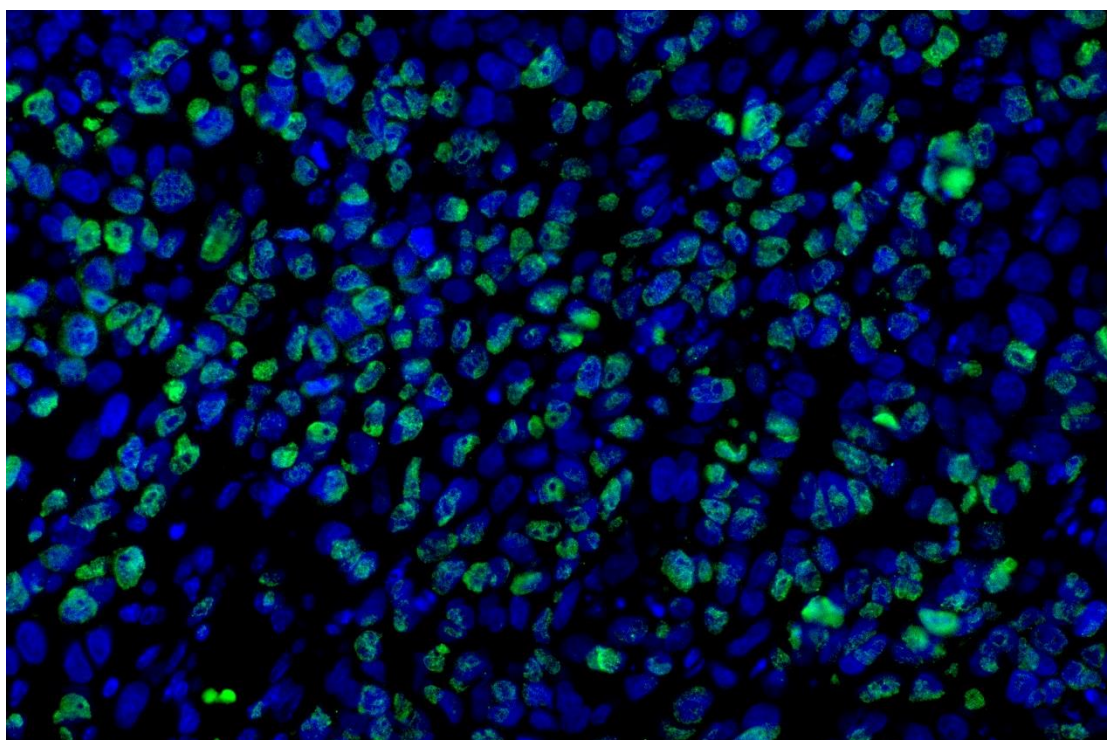
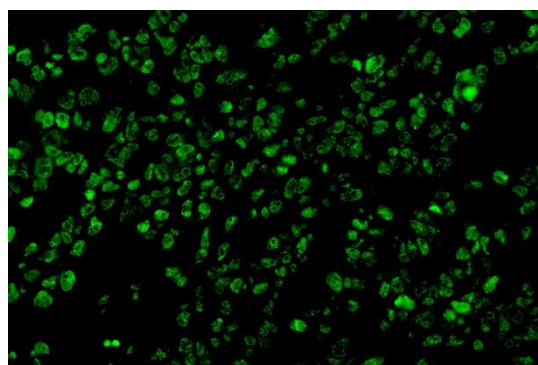
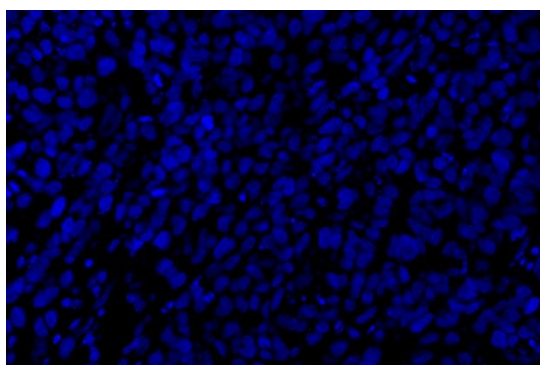




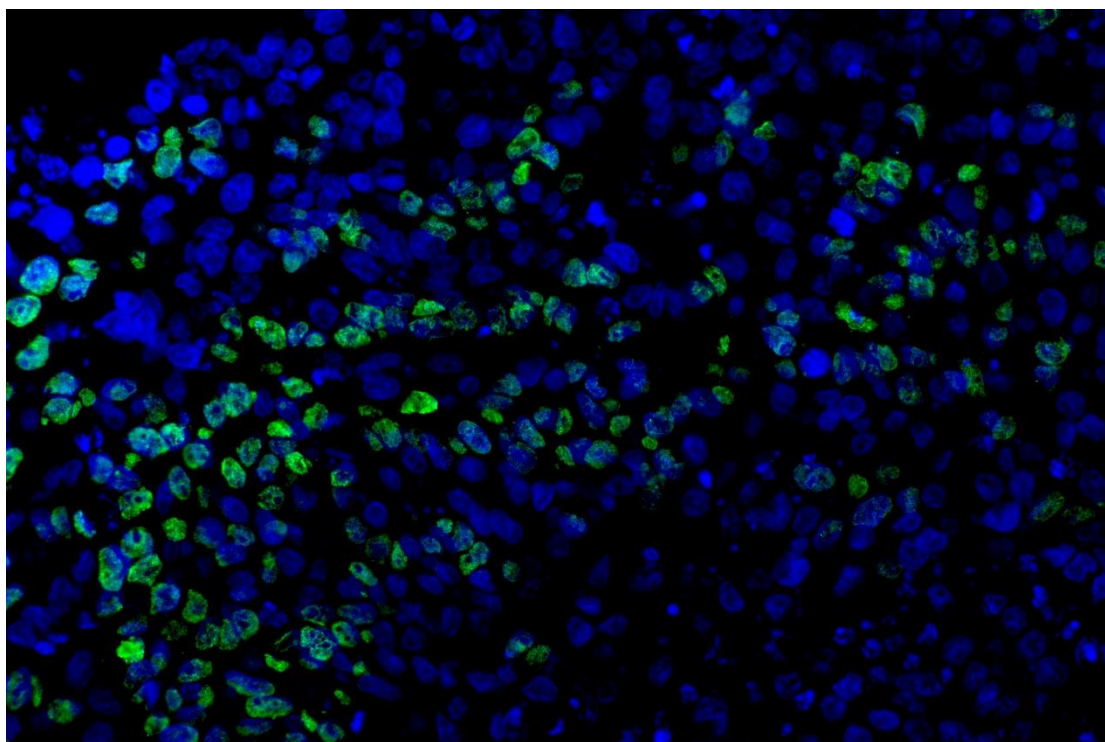
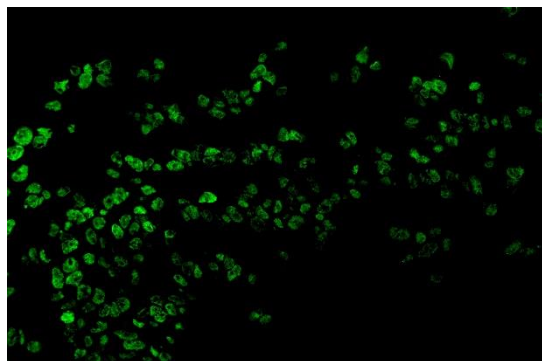
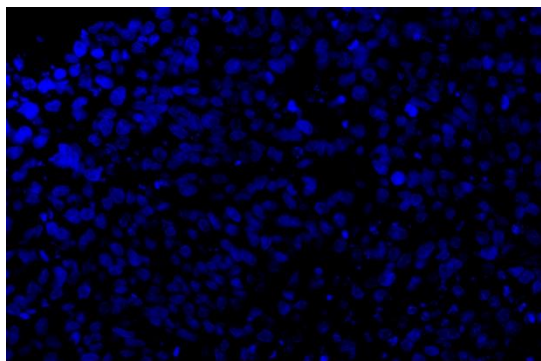
PCNA siCPNE3-2



Ki67 siNC



Ki67 siCPNE3-1





Ki67 siCPNE3-2

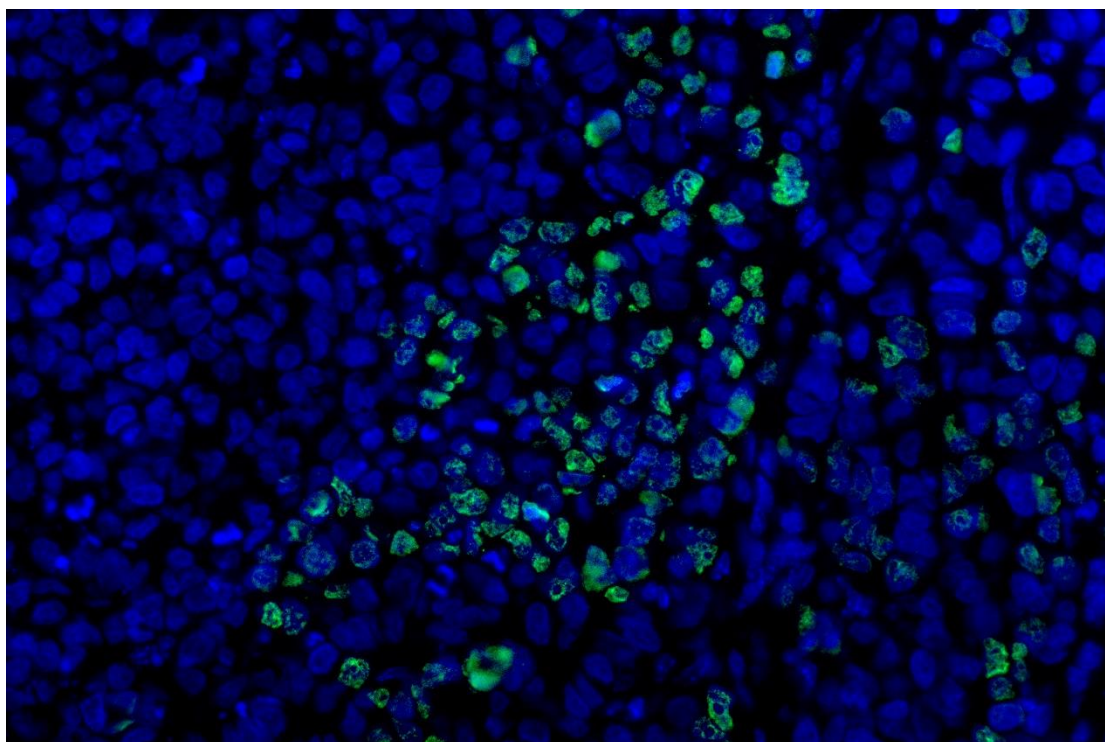
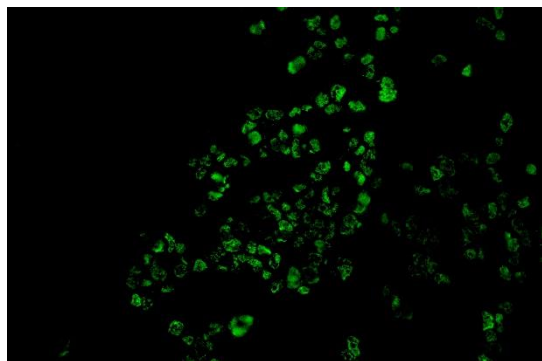
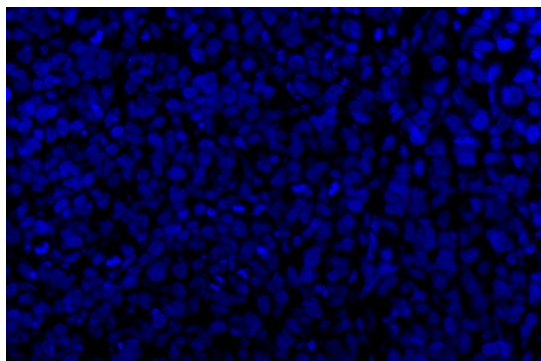
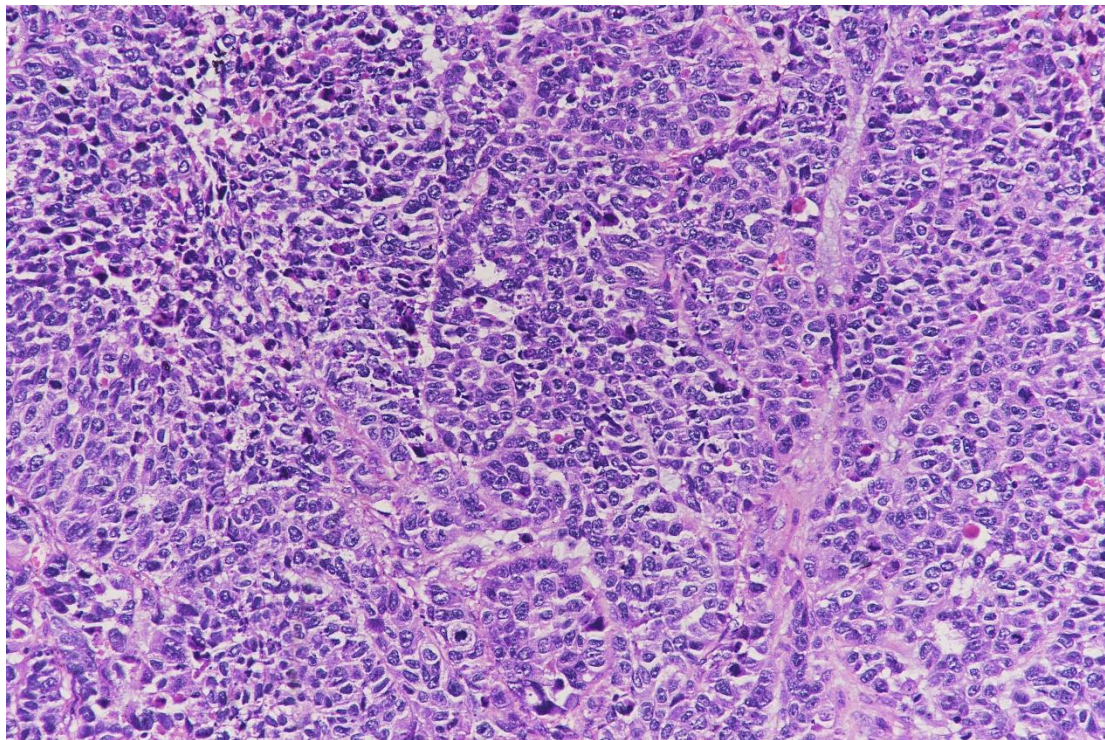


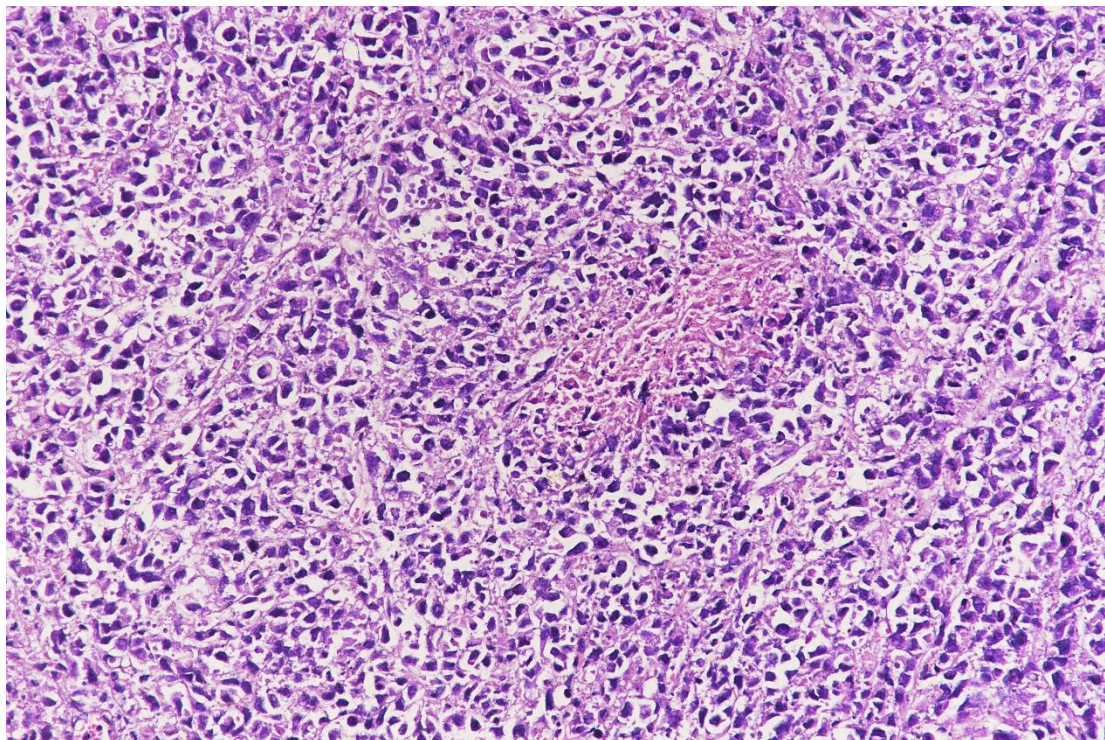


Figure S2. Representative images of HE staining of xenograft tumors tissues.

siNC



siCPNE3-1





siCPNE3-2

