

1
2
3
4
5
6
7
8
9
10
11
12
13
14
15
16
17
18

Supplementary Materials

GOLM1 Drives Colorectal Cancer Metastasis by Regulating Myeloid-derived Suppressor Cells

Yunzhi Dang[✉], Jiao Yu, Shuhong Zhao, Long Jin, Ximing Cao, Qing Wang

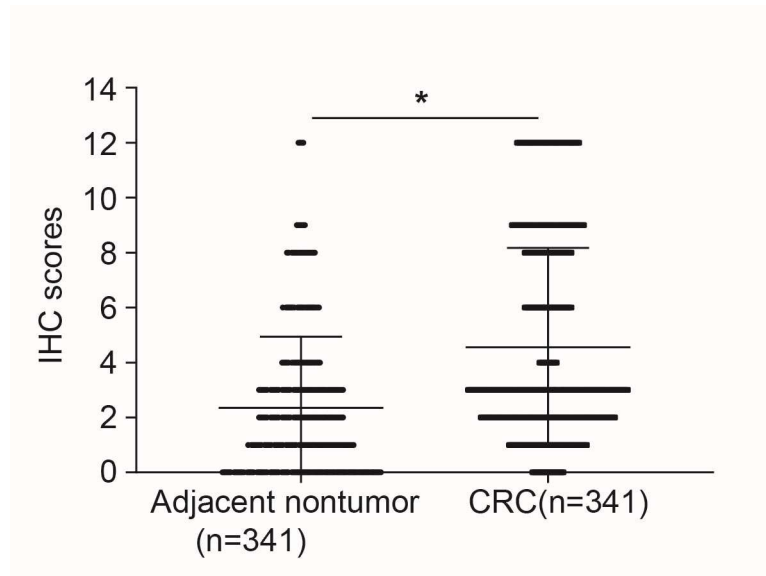
Department of Radiation Oncology, Shaanxi Provincial People's Hospital, Xi'an, 710086, China

Corresponding author: Dr. Yunzhi Dang

Department of Radiation Oncology, Shaanxi Provincial People's Hospital, Xi'an 710086, China

Tel: +86-29-8525 2140

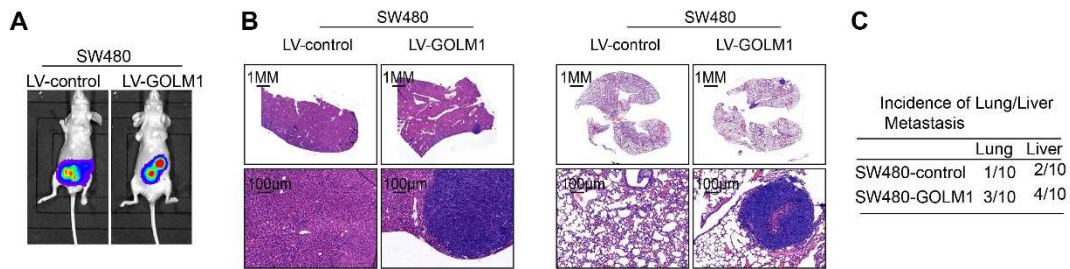
Email: dangyunzhi@xjtu.edu.cn



19

20 **Supplementary Figure 1. IHC scores of GOLM1 in human CRC tissues and**

21 **adjacent nontumor tissues.**



22

23 **Supplementary Figure 2. GOLM1 promotes CRC metastasis in nude mice.**

24 (A-B) Metastasis assays in the immune-deficiency nude mice. Bioluminescent

25 imaging(A), HE (B), and the incidence and number of lung and liver metastasis (C).

26