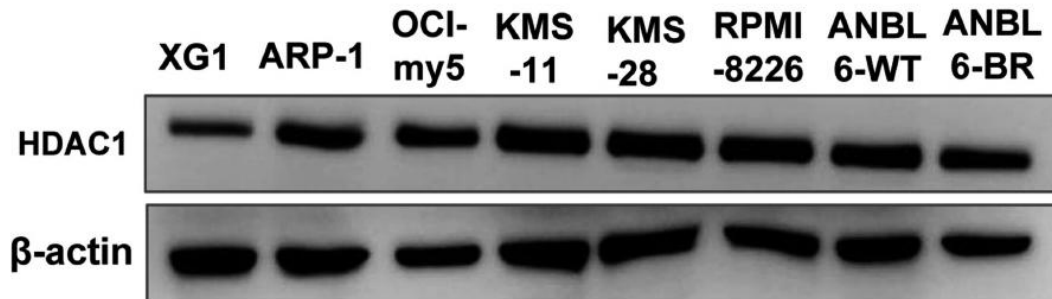
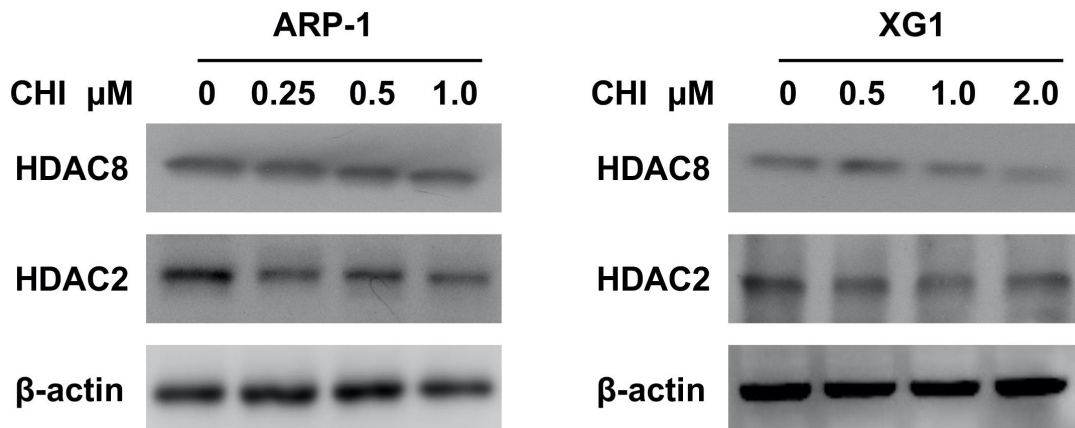


**Supplementary Figures**

**Supplementary Figure S1.** Relative protein levels of HDAC1 in the eight MM cell lines by Western blotting.



**Supplementary Figure S2.** The protein levels of HDAC2 and HDAC8 in ARP-1 and XG1 cells treated with different concentrations of CHI for 48 hours.



## Supplementary Tables

**Supplementary Table S1.** Clinical data of MM patients.

|           | Sex    | Age | classification<br>for monoclonal<br>protein | Clonal<br>plasma cell<br>percentage | FISH  | DS<br>stage | ISS<br>stage | R-ISS<br>stage | Previous<br>treatment<br>scheme |
|-----------|--------|-----|---|-------------------------------------|---|-------------|--------------|----------------|---------------------------------|
| Patient 1 | Male   | 66  | IgA $\lambda$                               | 20.5                                | none  | III A       | III          | III            | Newly<br>diagnosis              |
| Patient 2 | Female | 72  | IgG $\kappa$                                | 46.5                                | gain (1q21);<br>del (RB1);<br>del (DI3S319) | III A       | III          | III            | 3 cycles of<br>BDT regimen      |
| Patient 3 | Female | 62  | $\kappa$ light chain                        | 22.4                                | del (RB1);<br>del (DI3S319)                 | II A        | II           | II             | Newly<br>diagnosis              |

**Supplementary Table S2.** The sequences of primers.

| Gene             | Primer sequences (5'-3') |
|------------------|--------------------------|
| HDAC1-F          | GGTCCAAATGCAGGCGATTCCT   |
| HDAC1-R          | TCGGAGAACTCTTCCTCACAGG   |
| HDAC2-F          | AAAGTCTGCTACTACTACGACG   |
| HDAC2-R          | TTATGGGTCATGCGGATTCTAT   |
| HDAC3-F          | TTCAATATCCCTCTACTCGTGC   |
| HDAC3-R          | AGGTTTTCAAAGATTGTCTGGC   |
| HDAC8-F          | TCGCTGGTCCCGGTTTATATC    |
| HDAC8-R          | TACTGGCCCGTTTGGGGAT      |
| HDAC10-F         | CAGTTCGACGCCATCTACTTC    |
| HDAC10-R         | CAAGCCCATTTTGCACAGCTC    |
| $\beta$ -actin-F | GTCTTCCCCTCCATCGTG       |
| $\beta$ -actin-R | TTCTCCATGTCGTCCCAG       |