

Supplement Figure S1

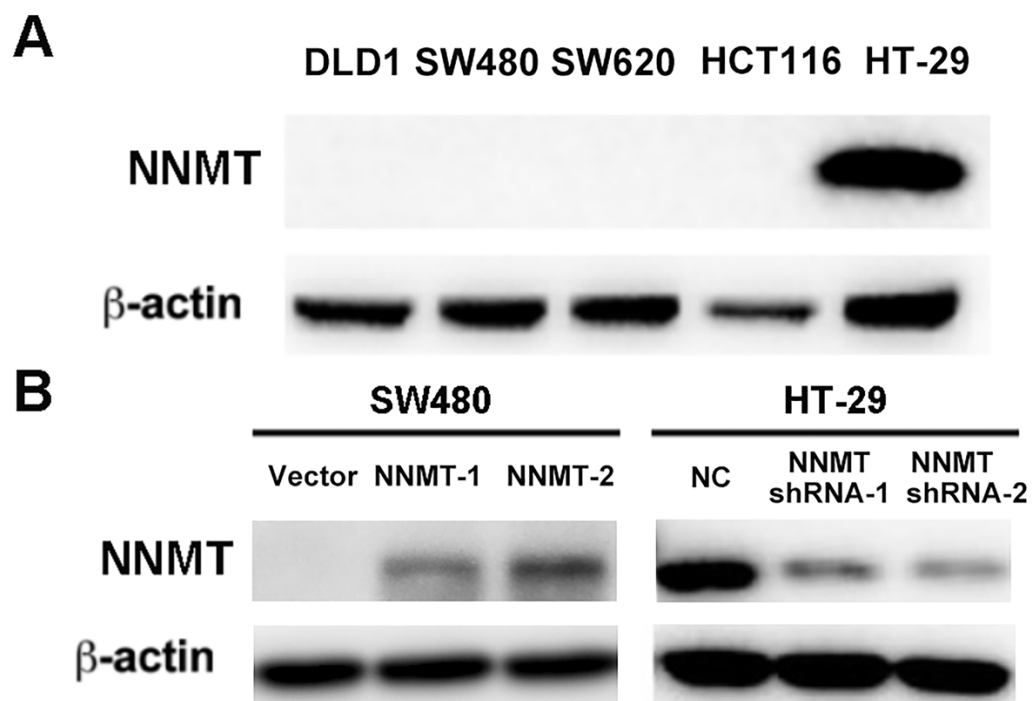


Figure S1. Expression of NNMT in different CRC cell lines and the cell models of NNMT overexpression and downregulation. (A) Western blot was used to analyze the NNMT protein expression levels in five CRC cell lines. β -actin was used as the internal control. High protein expression level of NNMT was detected in HT-29, while DLD1, SW480, SW620 and HCT116 cells showed no NNMT expression. (B) Western blot was used to analyze the NNMT expression in SW480 cell model with NNMT overexpression and HT-29 cell model with NNMT downregulation. These are the representative results of at least three independent experiments. β -actin was used as an internal control.