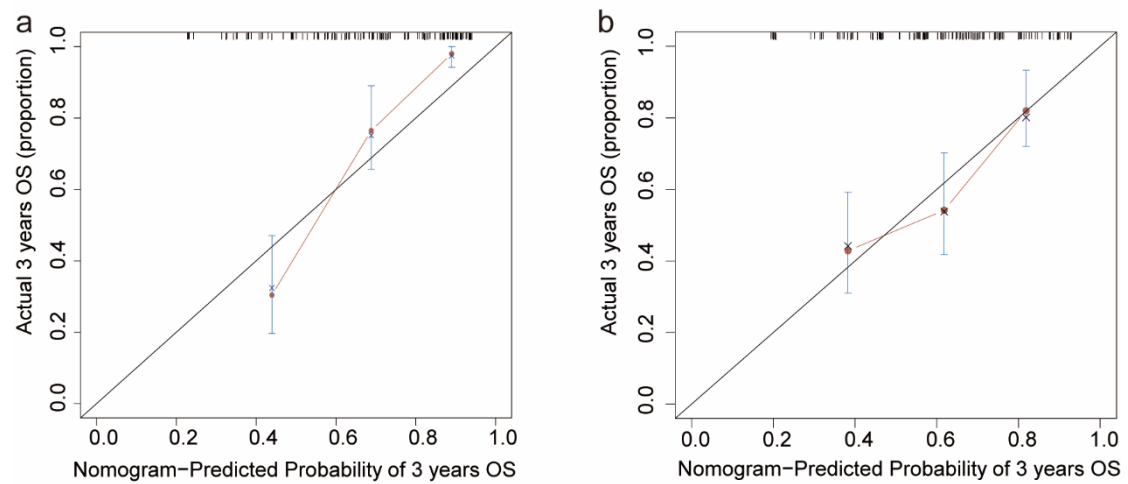
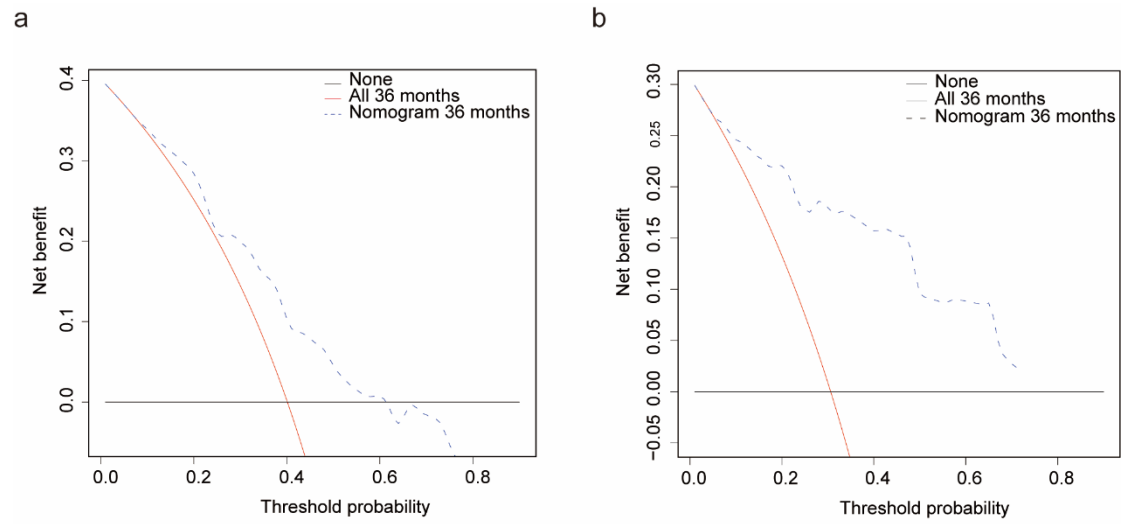


**Figure S1.** The selected cut off value analyzed by R software and the Kaplan-Meier survival analysis of the 16 biomarkers.



**Figure S2.** Decision curve analysis of the 3-year OS nomogram in patients with OSCC cancer in the training cohort and validation cohort. The net benefits (y axis) as calculated in the training cohort **(A)** the validation cohort **(B)** are plotted against the threshold probabilities of 3-year OS on the x axis. The dashed line represents the nomogram; The solid line: to assume all patients to have died; horizontal black line: to assume no patients to have died.



**Figure S3.** Evaluation of the 3-year OS nomogram using calibration curves. The dashed line represents an ideal evaluation, whereas the red line represents the performance of the nomogram in the training cohort **(A)** and validation cohort **(B)**.