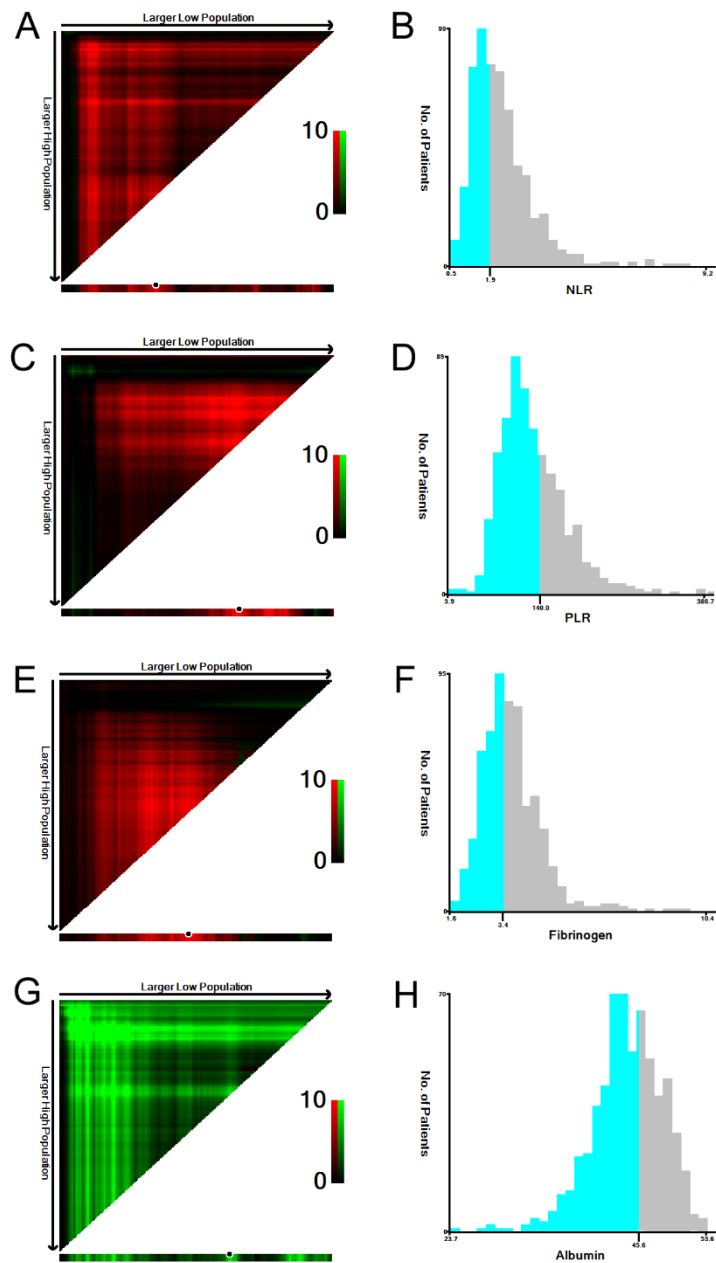


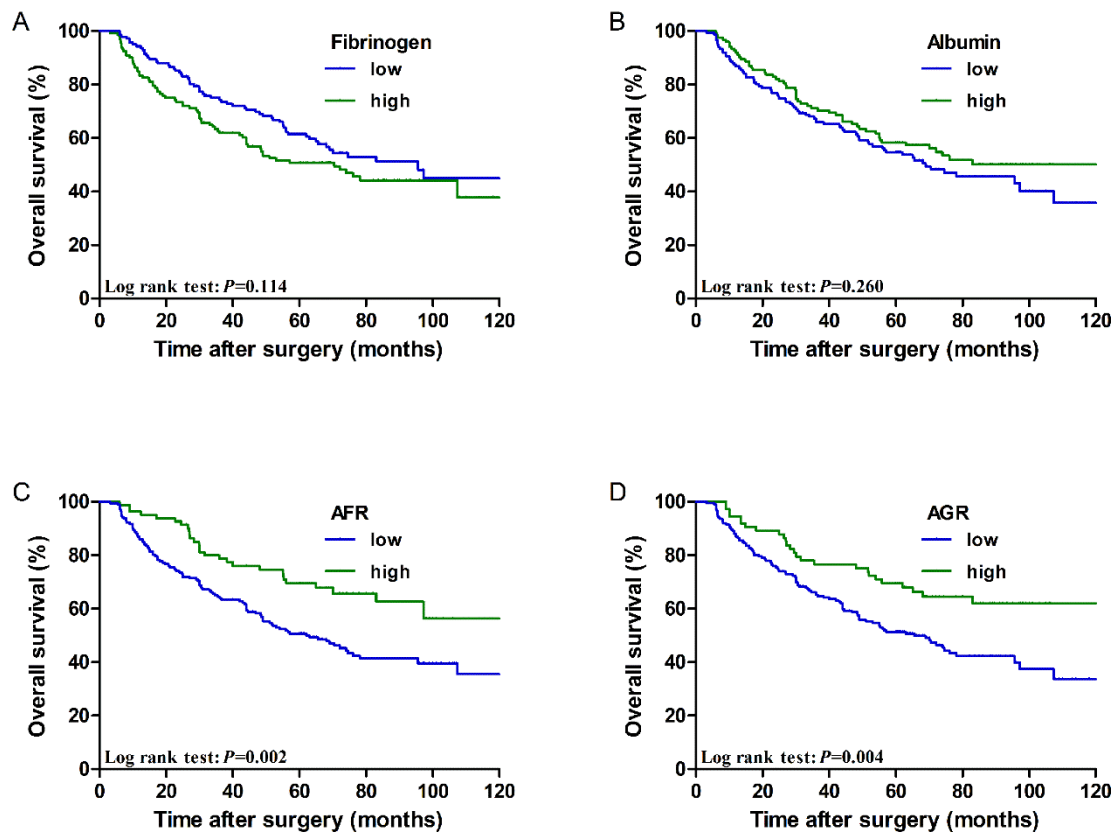
Prognostic Significance of the Preoperative Albumin/Fibrinogen Ratio in Patients with Esophageal Squamous Cell Carcinoma after Surgical Resection

Hongdian Zhang¹, Peng Ren¹, Mingquan Ma¹, Xiaolei Zhu¹, Kai Zhu¹, Wanyi Xiao¹, Lei Gong¹, Peng Tang¹, Zhentao Yu^{1, 2}

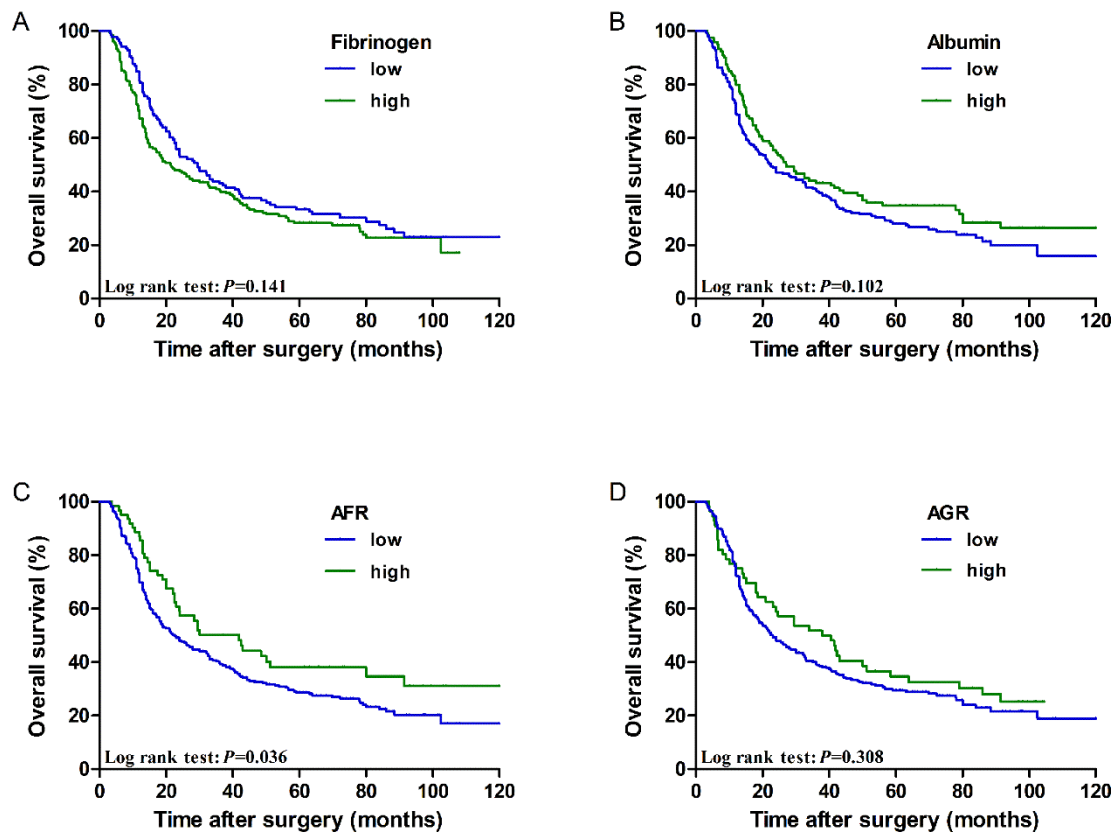
Supplementary Figures



Supplementary Figure 1. The optimal cutoff values of preoperative NLR (A-B), PLR (C-D), fibrinogen (E-F), and albumin (G-H) in 641 patients with ESCC using X-tile software.



Supplementary Figure 2. Cumulative 5-year overall survival curves for stage I-II ESCC patients according to **(A)** fibrinogen (61.5% vs. 50.7%, $P=0.114$), **(B)** albumin (54.6% vs. 58.3%, $P=0.260$), **(C)** AFR (50.6% vs. 69.5%, $P = 0.002$), and **(D)** AGR (51.3% vs. 69.5%, $P = 0.004$).



Supplementary Figure 3. Cumulative 5-year overall survival curves for stage III ESCC patients according to **(A)** fibrinogen (33.3% vs. 28.2%, $P = 0.141$), **(B)** albumin (28.0% vs. 34.7%, $P = 0.102$), **(C)** AFR (28.6% vs. 38.1%, $P = 0.036$), and **(D)** AGR (29.5% vs. 34.6%, $P = 0.308$).