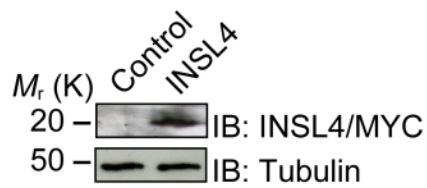
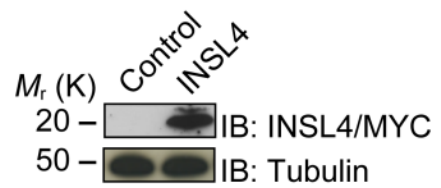


## A H1299

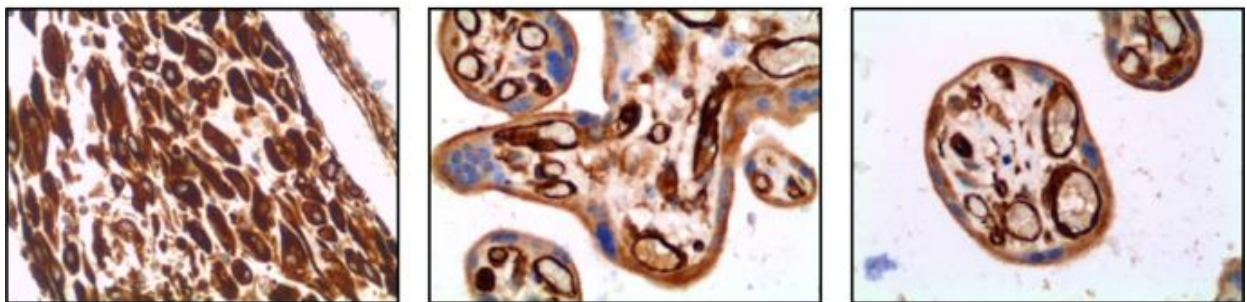


## B A549



Supplementary Figure S1. INSL4 transfection in H1299 and A549 cell lines. A-B, Transfection efficiency of the fusion protein INSL4-Myc-Tag in (A) H1299 and in (B) A549 cell lines was evaluated by immunoblot analysis using anti Myc-Tag. Anti-Tubulin is used as loading control.

## A Placenta



Supplementary Figure S2. A, INSL4 immunohistochemistry staining for assessing a positive control for anti-INSL4 antibody using human placenta slides. In pictures placental cytotrophoblast and syncytiotrophoblast are showed. Magnification x400.