

# miR-369 Inhibits Liver Cancer Progression by targeting ZEB1

## Pathway and Predicts the Prognosis of HCC Patients

Yuwei Dong<sup>1, #</sup>, Fuxia Li<sup>2, #</sup>, Junjun Wang<sup>1, #</sup>, Jiangfeng Hu<sup>1</sup>, Zhenghong Li<sup>1</sup>, Yubei Gu<sup>3, \*</sup>, Yun Feng<sup>1, \*</sup>

<sup>1</sup>Department of Gastroenterology, Shanghai General Hospital, School of Medicine, Shanghai Jiao Tong University. Shanghai, 200080, China.

<sup>2</sup>Department of General Surgery, Cao County People's Hospital, Heze, Shandong province, 274400, China.

<sup>3</sup>Department of Gastroenterology, Rui Jin Hospital, School of Medicine, Shanghai Jiao Tong University. Shanghai, 200025, China.

# These authors contribute equally to this paper and are the co-first authors of this paper.

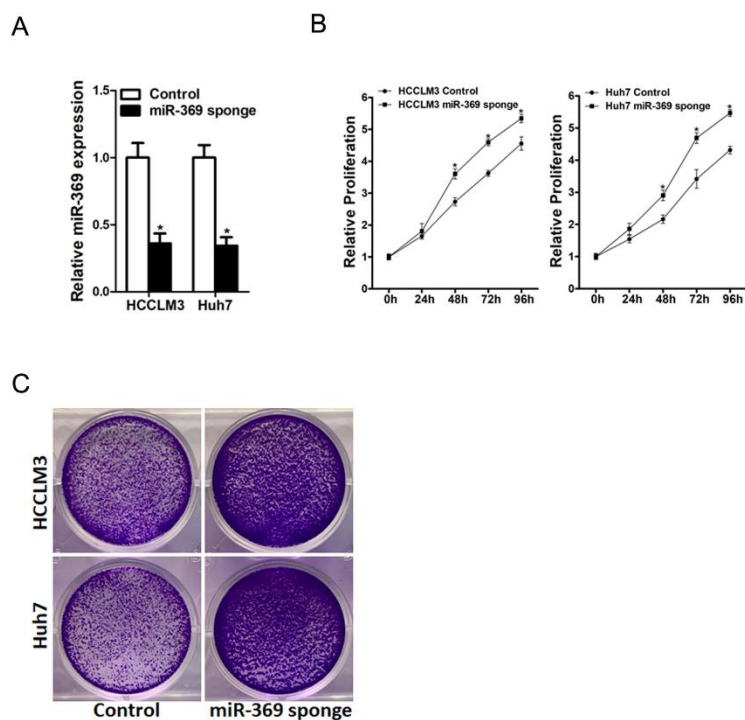
**Corresponding authors:** Department of Gastroenterology, Shanghai General Hospital, School of Medicine, Shanghai Jiao Tong University. No 100, Hai Ning Road, Shanghai, 200080, China. Email address: [yun.feng2@shgh.cn](mailto:yun.feng2@shgh.cn) (Yun Feng); [gyb11809@rjh.com.cn](mailto:gyb11809@rjh.com.cn) (Yubei Gu).

**Running title:** miR-369 inhibits HCC cells expansion.

**Funding:** This work was supported by grants from the National Natural Science Foundation of China: 81900544; sponsored by shanghai sailing program: 19YF1439000.

**Competing interests:** All authors declare no competing interests.

## Supplementary Figure 1



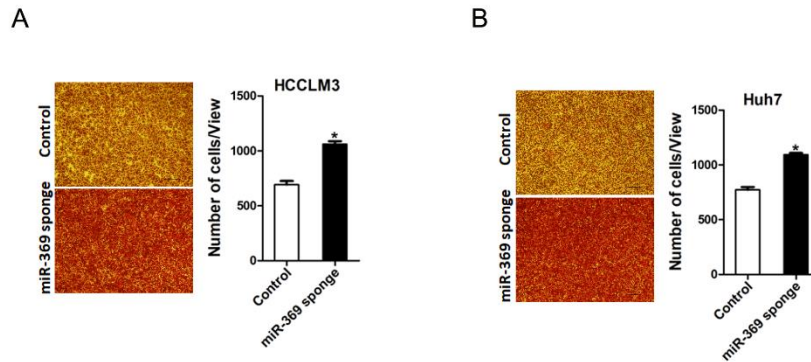
### Supplementary Figure 1

A. The knockdown effect of miR-369 in HCCLM3 and Huh7 cells was checked by real-time PCR assay.

B. Cell proliferation was measured using CCK-8 assays in HCCLM3 miR-369 sponge or Huh7 miR-369 sponge and their control cells.

C. Colony formation assays of HCCLM3 miR-369 sponge or Huh7 miR-369 sponge and their control cells.

## Supplementary Figure 2



### Supplementary Figure 2

A. The invasion ability of HCCLM3 miR-369 sponge and its control cells was performed utilizing polycarbonate membrane inserts in a 24-well plate.

B. The invasion ability of Huh7 miR-369 sponge and its control cells was performed utilizing polycarbonate membrane inserts in a 24-well plate.

## Supplementary Tables

**Supplementary Table 1. Clinicopathological features of 120 HCC patients in Cohort 1**

| Characteristics            |          | miR-369<br>low (n=60) | miR-369<br>high (n=60) | p value |
|----------------------------|----------|-----------------------|------------------------|---------|
| Age(year)                  | ≤50      | 36                    | 37                     | >0.05   |
|                            | >50      | 24                    | 23                     |         |
| Gender                     | Male     | 48                    | 47                     | >0.05   |
|                            | Female   | 12                    | 13                     |         |
| HBsAg                      | Positive | 45                    | 31                     | <0.05   |
|                            | Negative | 15                    | 29                     |         |
| AFP(μg/L)                  | ≤400     | 10                    | 28                     | <0.05   |
|                            | >400     | 50                    | 32                     |         |
| Tumor size(cm)             | ≤5       | 14                    | 28                     | <0.05   |
|                            | >5       | 46                    | 32                     |         |
| Tumor number               | Single   | 35                    | 37                     | >0.05   |
|                            | Multiple | 25                    | 23                     |         |
| Portal vein tumor thrombus | Yes      | 25                    | 10                     | <0.05   |
|                            | No       | 35                    | 50                     |         |
| Pathological satellite     | Yes      | 30                    | 32                     | >0.05   |

|            |        |    |    |       |
|------------|--------|----|----|-------|
|            | No     | 30 | 28 |       |
| BCLC stage | A      | 21 | 34 | <0.05 |
|            | B or C | 39 | 26 |       |
| TNM        | I-II   | 46 | 45 | >0.05 |
|            | III-IV | 14 | 15 |       |

---

HBsAg: hepatitis B virus surface antigen; AFP:  $\alpha$ -fetoprotein; TNM: Tumor-Nodes-Metastasis;  
BCLC: Barcelona Clinic Liver Cancer Staging.