

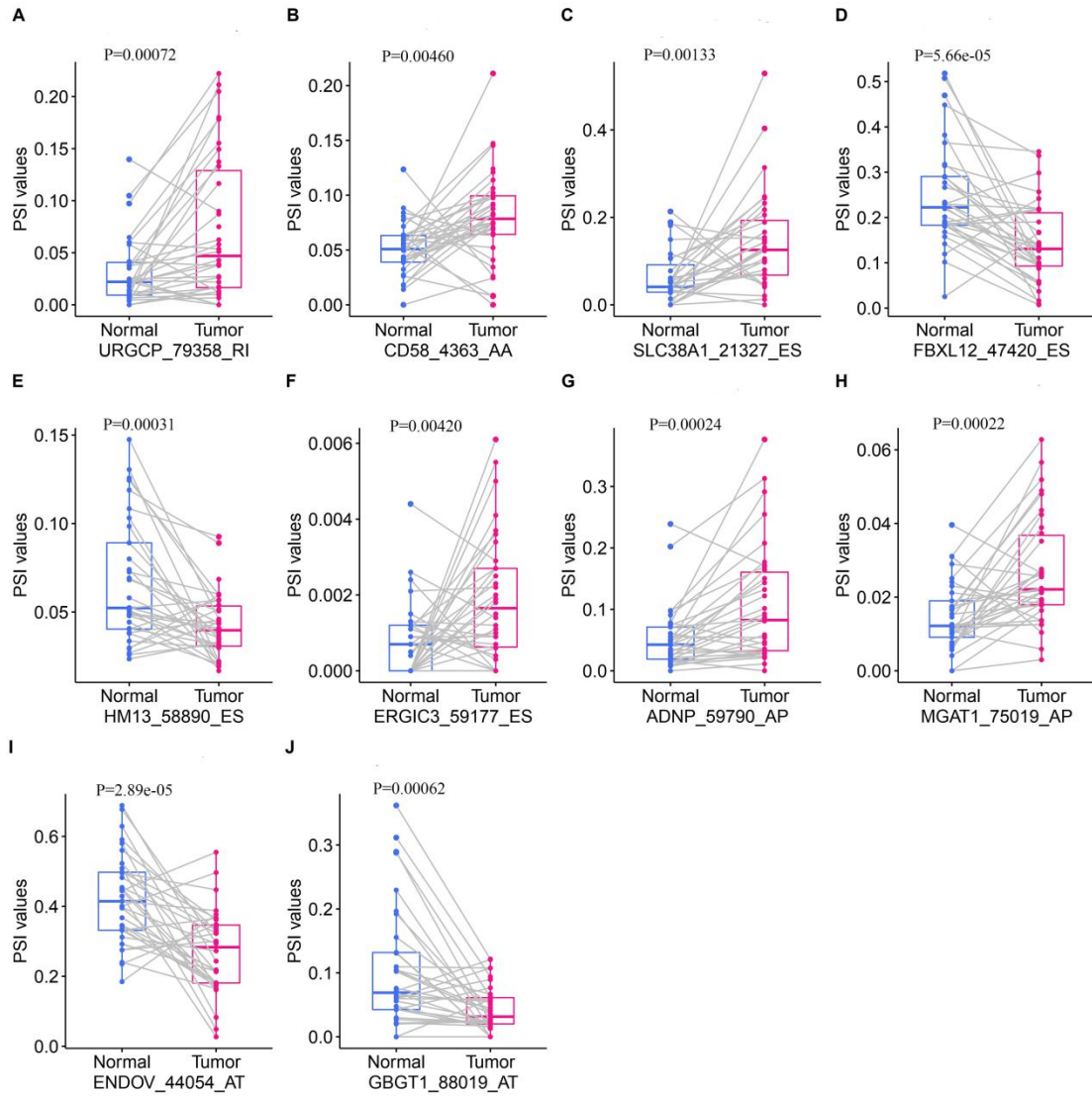
**Table S1:** Clinical features of gastric cancer patients in TCGA.

<b>Characteristics</b>	<b>No. of patients (%)</b> <b>(n = 443)</b>
Age (years)	
Median(IQR)	66(30-90)
< 60	133
≥ 60	305
Sex	
Female	158
Male	285
Local invasion	
T1–T2	116
T3–T4	317
Tx	10
Lymph node metastasis	
N0	132
N1	119
N2	85
N3	88
Nx	17
Distant metastasis	
M0	391
M1	30
Mx	22
TNM stage	
I	59
II	130
III	183
IV	44
Survival status	
No	356
Yes	87

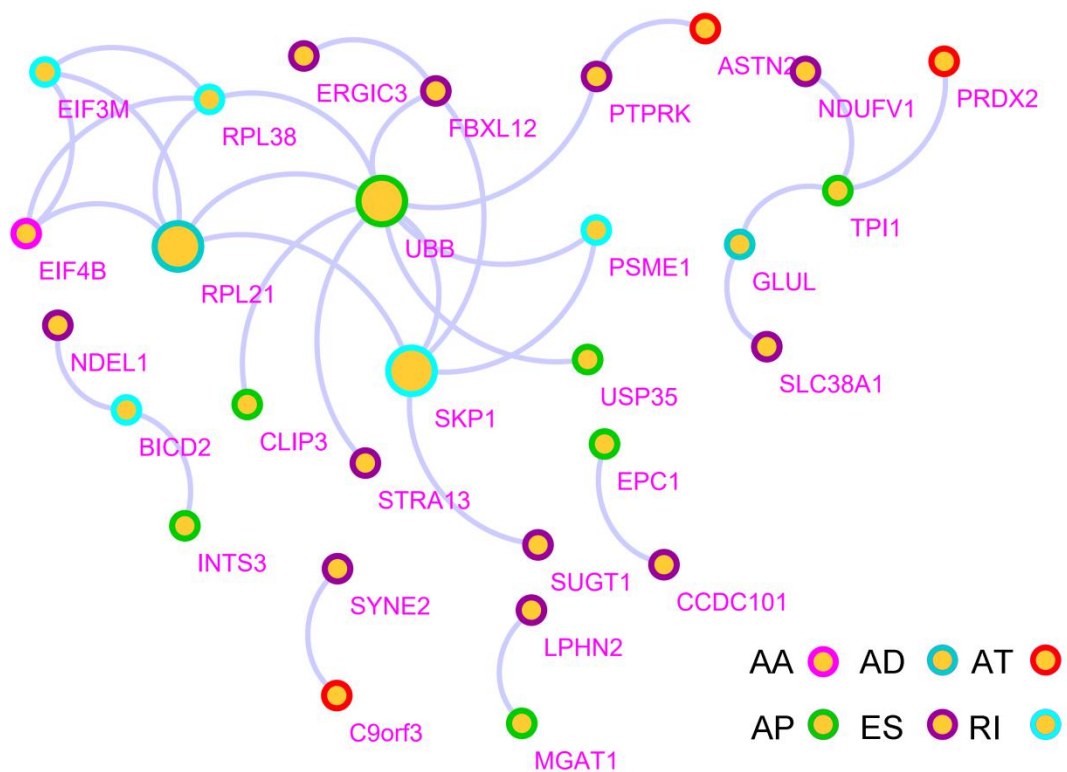
<sup>a</sup>Age data were not available for 5 individuals; <sup>b</sup> lymph node metastasis was not available in 2 case; <sup>c</sup>pathologic TNM stage was not available for 27 individuals.

**Table S2:**The primers used in the study.

<b>Gene symbol</b>		<b>Primers</b>
URGCP	COMMON PRIMER	AAGTGAATTACTGGGCAAAGG
URGCP	AS PRIMER	ACCTATCAAACCTGGCCGCAT
URGCP	TOTAL PRIMER	CCACAGCTGTTCTGTCTCTCT
CD58	COMMON PRIMER	TCTCCCACTAACTTGTGCA
CD58	AS PRIMER	AGAAATTGTCTTCTCAATTAAGA
CD58	TOTAL PRIMER	TGGTTCTGTCTGGTTTTCTGTCA
SLC38A1	COMMON PRIMER	CCTCGGGCACTGTCATGTTT
SLC38A1	AS PRIMER	GTCCTTTGTCTTGCTCTGCG
SLC38A1	TOTAL PRIMER	AGTGTCTACTGTGTGCCAGG
FBXL12	COMMON PRIMER	CTGTCTCGGTCACACGGTAG
FBXL12	AS PRIMER	TGCCAAGTAGAGAAATCCAGCA
FBXL12	TOTAL PRIMER	GAAGAGGCTGGTGGACGAC
HM13	COMMON PRIMER	TCGGTTTTCTGTCTGGTG
HM13	AS PRIMER	TACATGGCGCTGGGATTCTG
HM13	TOTAL PRIMER	ATCTGTCTGGTCTGGCCCT
ERGIC3	COMMON PRIMER	TCGCTGTGAGAGCTGCTATG
ERGIC3	AS PRIMER	CCAGGCTCCGTGCTATCATC
ERGIC3	TOTAL PRIMER	GGAAGTTCCGGCCACCTTA
ADNP	COMMON PRIMER	CGCTGCAGCAGAAAGGTTTT
ADNP	AS PRIMER	TGCGCGACAGAGTAAGACTC
ADNP	TOTAL PRIMER	GGCAGTTTAAGAAAAGCCCGG
MGAT1	COMMON PRIMER	ACCTCCCTTCATTCAGCTGC
MGAT1	AS PRIMER	GGGTAGAAAAATGGGCGGGA
MGAT1	TOTAL PRIMER	ATGGGCCAGTTCTCACAGTG
ENDOV	COMMON PRIMER	CTGACATCTGCTCCCGAGAG
ENDOV	AS PRIMER	TCCCTTAAGATCAGGAACAAGACA
ENDOV	TOTAL PRIMER	GGAGTCTCCTTTGGGGCATG
GBGT1	COMMON PRIMER	CCTCAGAGACCAGGCTCAGA
GBGT1	AS PRIMER	GTGTGCCTGTAATCCAGCT
GBGT1	TOTAL PRIMER	GACATAGGAGACTGGCAGCC
GAPDH	FORWORD PRIMER	GCACCGTCAAGGCTGAGAAC
GAPDH	REVERSE PRIMER	GGATCTCGCTCCTGGAAGATG



**Figure S1: Expression of DEAS in 10 independent prognoses of gastric cancer.**



**Figure S2: Protein-protein interaction network analysis of DEAS in gastric cancer.** The color of the node represents the AS pattern. Hub nodes in the network are amplified.