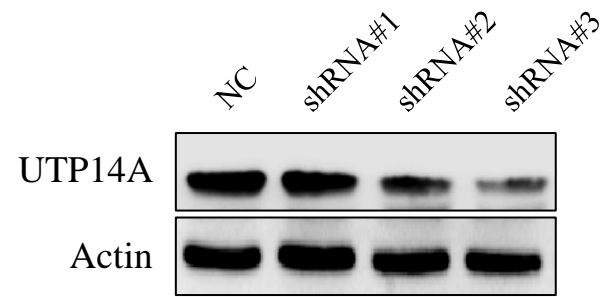
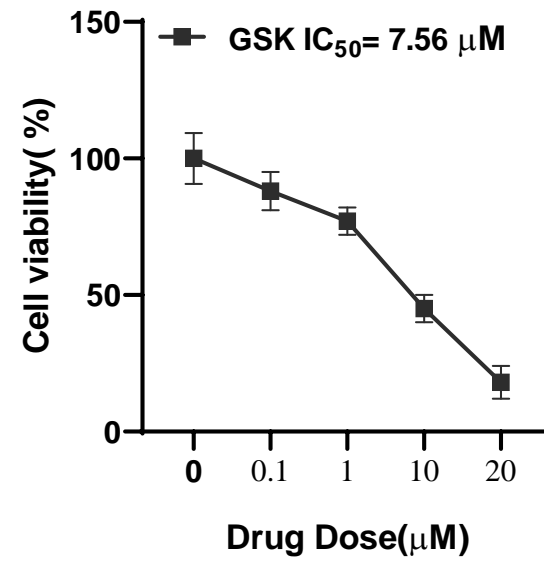
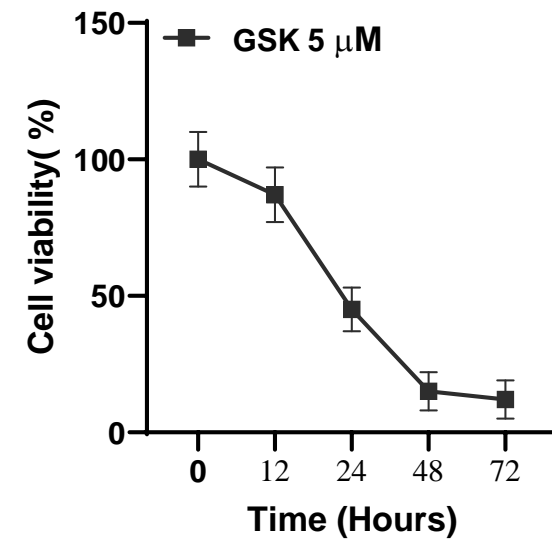


A**B****C**

Supplementary Figure 1. A. The shRNA knocks down UTP14A detected by western blotting. **B.** Inhibition of esophageal cancer cells (Eca109) with different concentrations of GSK, detected by CCK8. **C.** 5 μ M GSK inhibits esophageal cancer cells (Eca109) at different times, detected by CCK8.