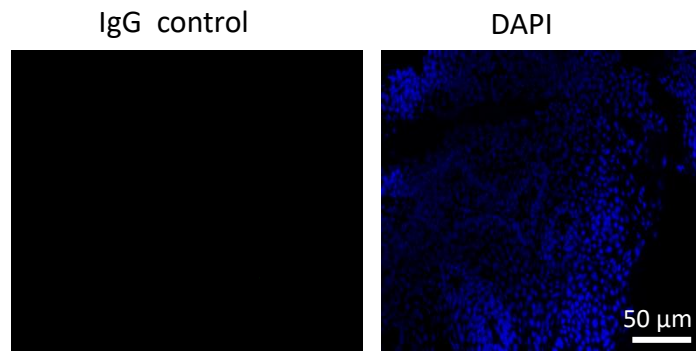
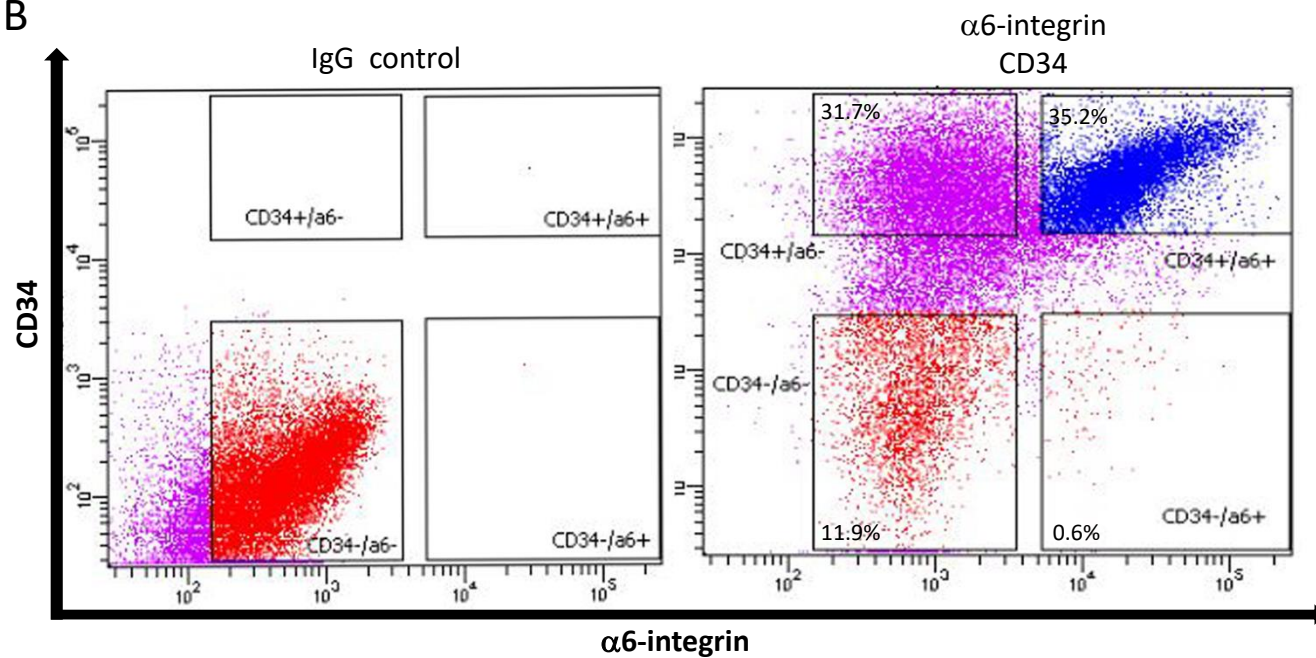
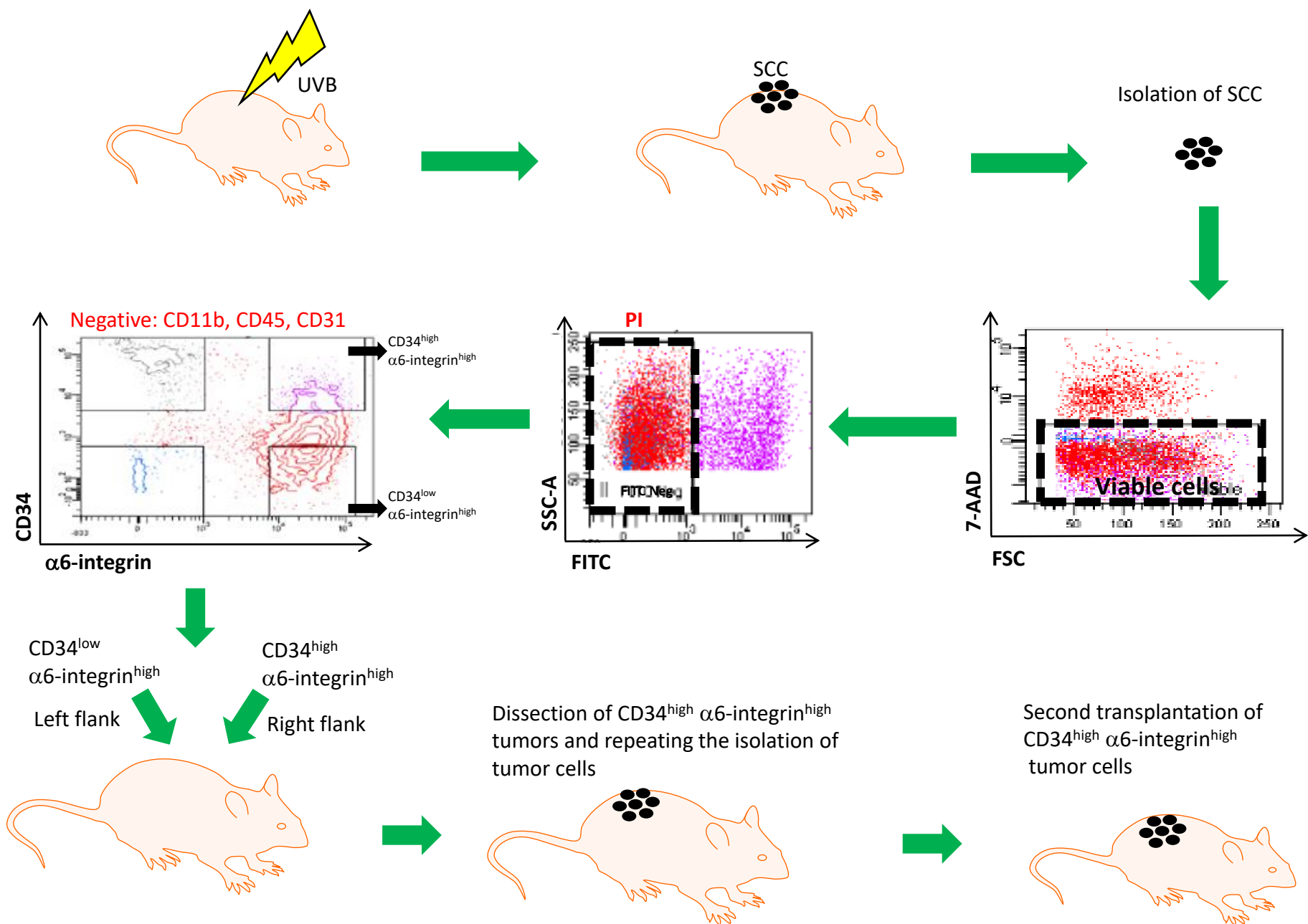


A**B****Supplementary Fig. 1**

A. Immunofluorescence staining of UV-induced tumour tissue with IgG control (red) antibody and DAPI (blue).
B. Flow cytometry analysis of tumour cell population isolated from UV-treated animals stained with IgG control (left panel) or α6-integrin and CD34 antibodies in order to sort the cells.



Supplementary Fig. 2

Strategy to isolate CD34^{low}α6-integrin^{high} and CD34^{high}α6-integrin^{high} cells from SCC in animals and transplantation into immunocompromised animals.

Suppl. Fig. 2