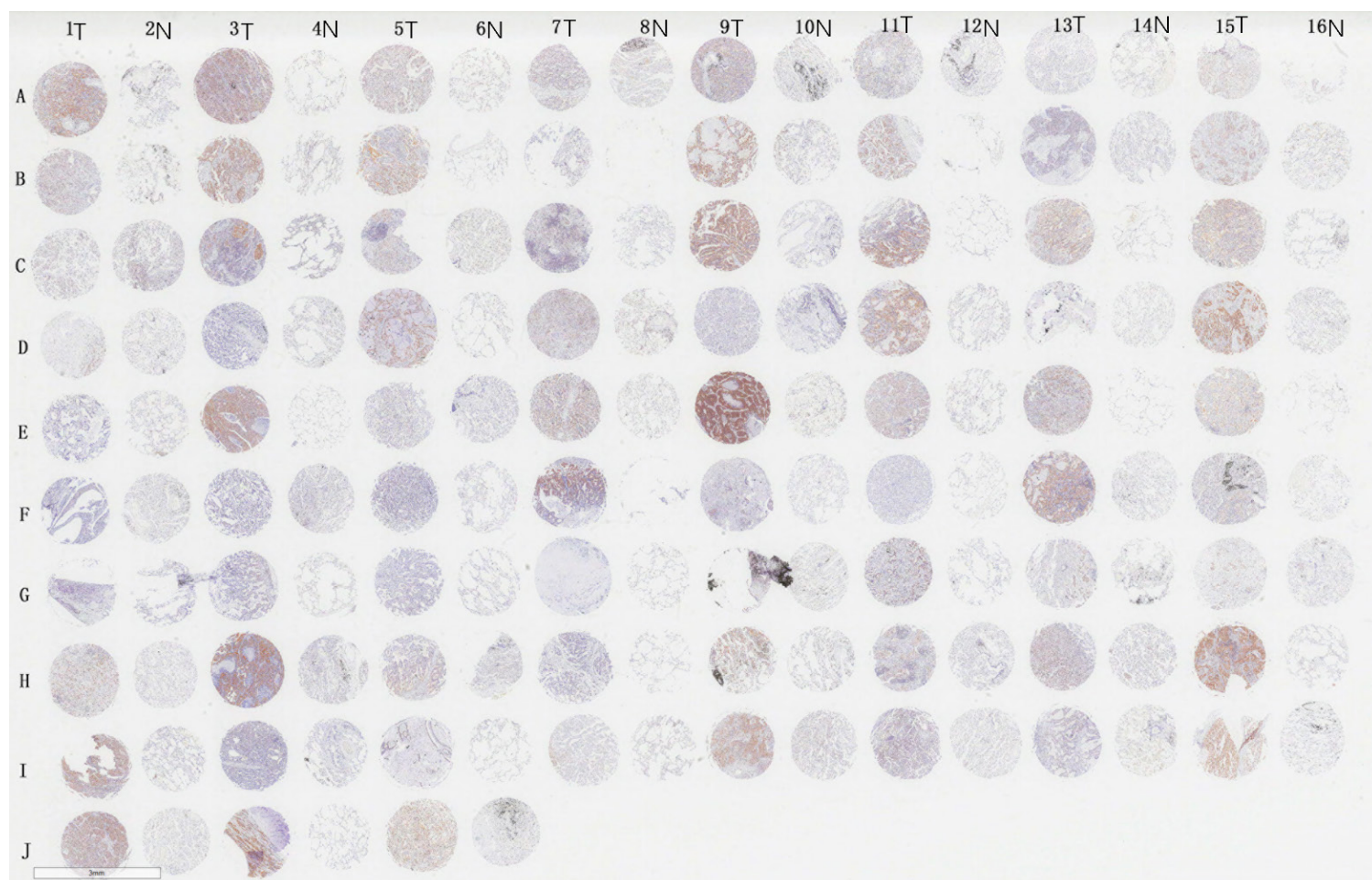


## Supplementary Figure 1



**Supplementary Figure 1** Specificity and cellular localization of UCHL5 were determined by immunohistochemistry for the LUAD patients. A total of 75 of paired tumor and noncancerous tissues from the LUAD patients were stained with anti-UCHL5 antibody. Scale bar, 3mm. LUAD: lung adenocarcinoma.