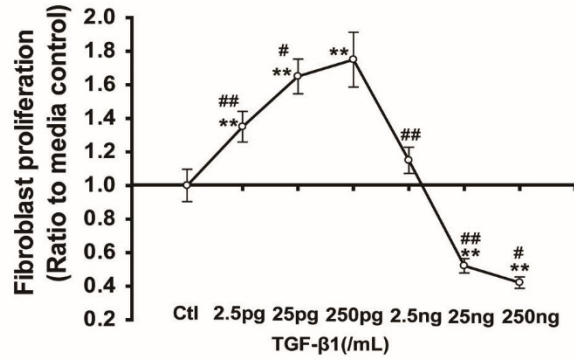
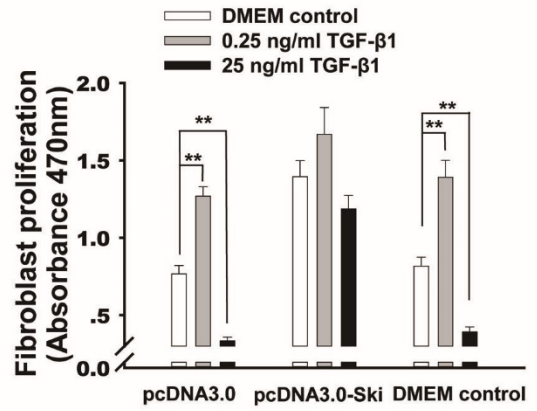


**Fig. S1**

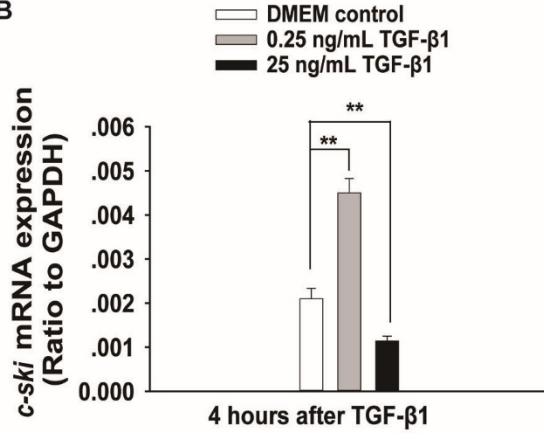
**A**



**C**



**B**



**D**

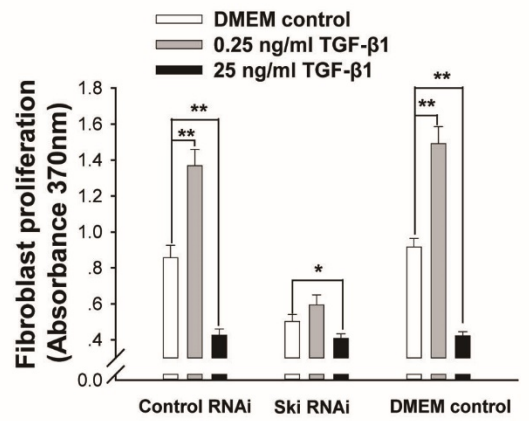
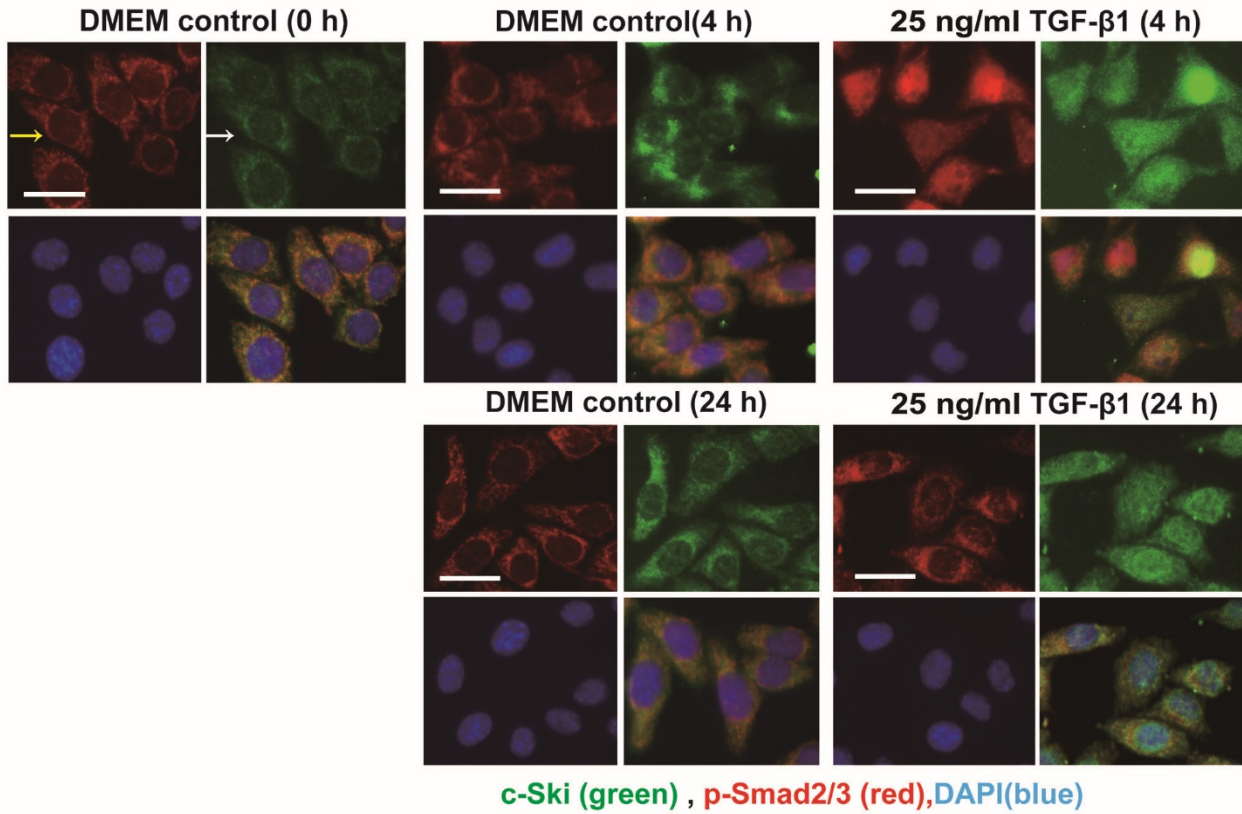
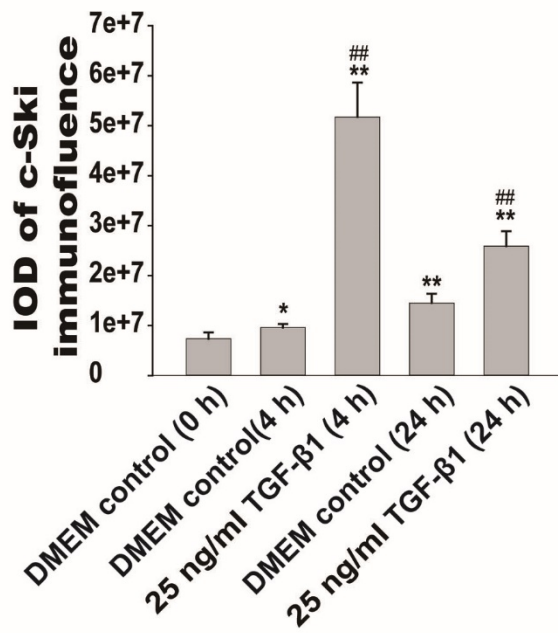


Fig. S2

A



B



C

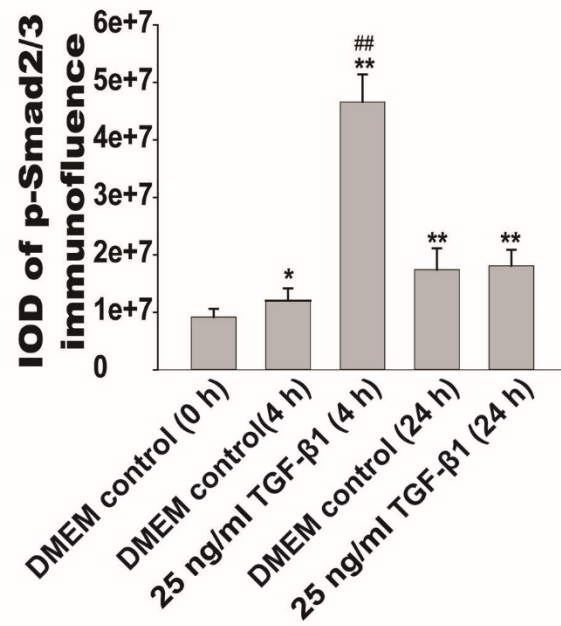
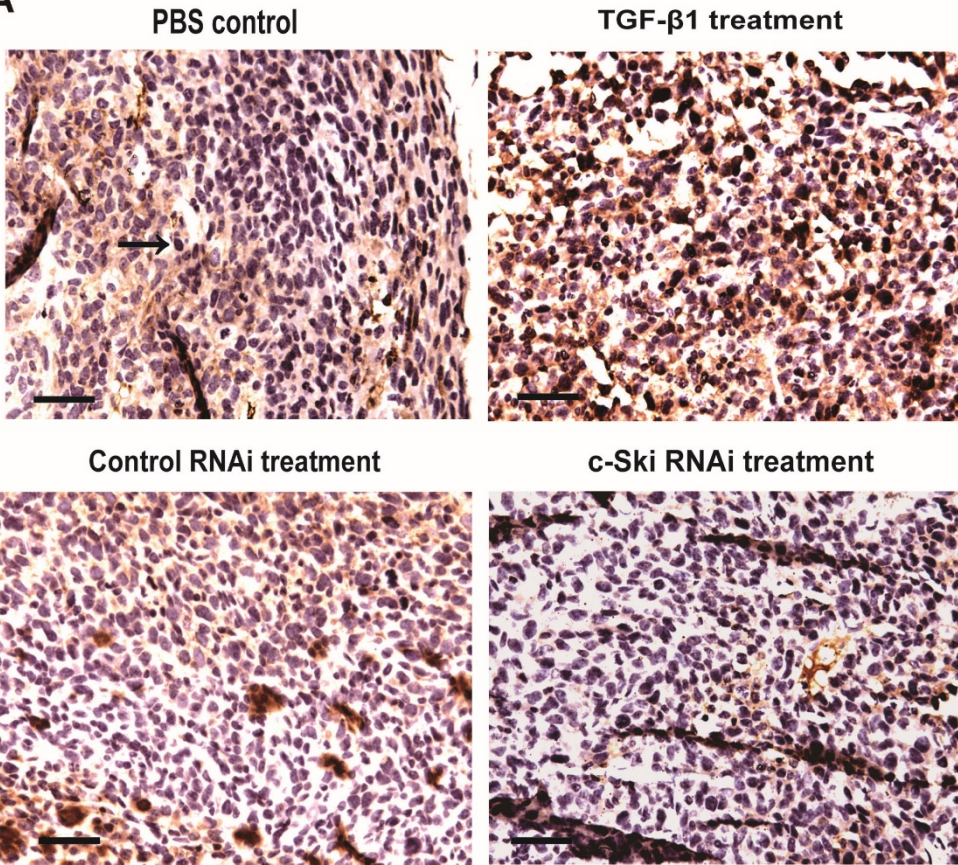
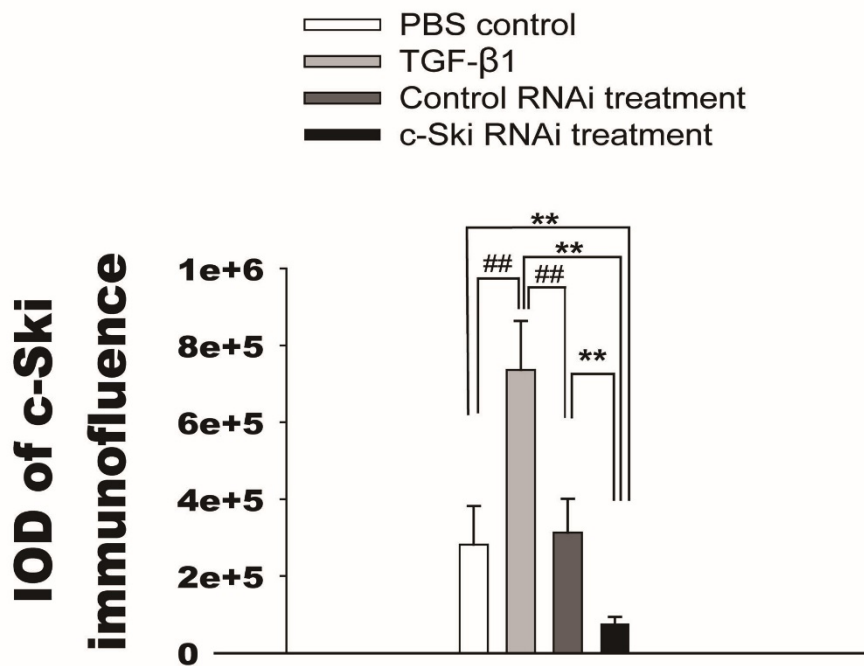


Fig. S3

A



B



**Table SI** Summary of the clinicopathological variables for the dermatofibrosarcoma protuberans patients

Cases	Sex	Age	Site	Primary/recurrent	Tumor differentiation	The Ski expression
1	male	39	buttock	P	low	2+
2	female	50	thigh	R	high	1+
3	male	29	Shoulder	P	low	1+
4	male	50	chest	R	Moderate	2+
5	female	65	neck	R	low	2+
6	female	23	chest	R	high	1+
7	male	50	abdomen	P	high	-
8	male	77	back	R	low	1+
9	female	43	abdomen	R	Moderate	2+
10	female	38	waist	P	high	1+
11	male	12	back	P	low	2+
12	male	43	head	P	high	-
13	female	58	back	P	Moderate	1+
14	male	27	abdomen	R	low	1+
15	male	38	Shoulder	P	low	1+
16	female	22	abdomen	R	Moderate	1+
17	male	53	abdomen	R	Moderate	3+

---

<b>18</b>	female	37	abdomen	P	low	<b>1+</b>
<b>19</b>	male	36	neck	R	low	<b>2+</b>
<b>20</b>	male	43	abdomen	R	high	<b>1+</b>
<b>21</b>	female	27	arm	R	Moderate	<b>1+</b>
<b>22</b>	male	26	leg	P	low	<b>3+</b>
<b>23</b>	female	61	chest	R	low	<b>3+</b>
<b>24</b>	male	59	abdomen	P	Moderate	<b>2+</b>
<b>25</b>	male	70	buttock	P	low	<b>2+</b>

---

**Table SII** Multivariate logistic regression analysis

<b>Model Summary</b>			
Cox & Snell square	Nagelkerke square	McFadden square	
0.489	0.557	0.319	
<b>Likelihood Ratio Test</b>			
	chi square	Df	p
Age	0.050	2	0.975
Sex	2.117	2	0.347
Primary or Recurrence	1.796	2	0.407
The expression level of Ski	13.433	2	0.001
<b>Variables in the equation</b>			
a	Wald	Df	p
Poor differentiation			
Age	0.025	1	0.874
Sex	1.622	1	0.254
Primary or Recurrence	1.558	1	0.261
The expression level of Ski	611.931	1	0
Moderate differentiation			
Age	0.047	1	0.823
Sex	1.668	1	0.693
Primary or Recurrence	1.596	1	0.660
The expression level of Ski	-	1	-

Note: a:Reference category(Well differentiation).