

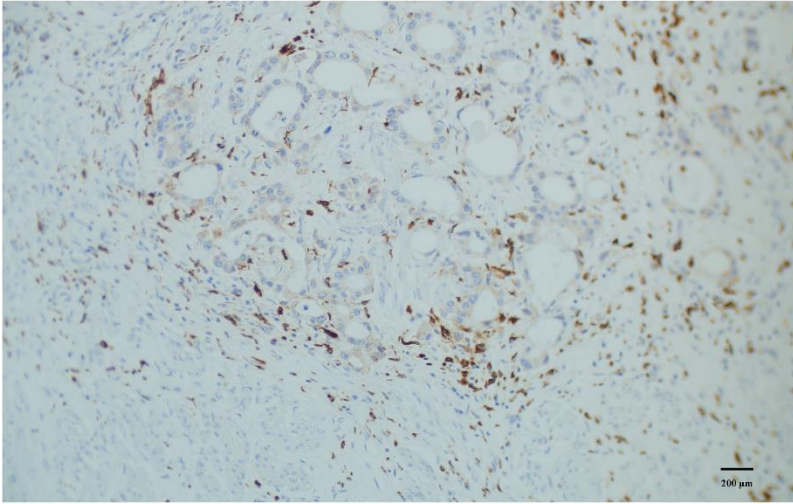
Table S1. Comparison of the Prognostic Accuracies of Different Models

RFS	C-index	95% CI	p value*
TNM	0.7428	0.7029-0.7828	/
TNM+LMR	0.7693	0.7263-0.8123	0.012
TNM+TAM	0.7917	0.7464-0.8369	<0.001
TNM+LMR+TAM	0.8036	0.7612-0.8459	<0.001
OS	C-index	95% CI	p value*
TNM	0.7699	0.7374-0.8024	/
TNM+LMR	0.7994	0.7622-0.8364	0.015
TNM+TAM	0.8127	0.7776-0.8479	<0.001
TNM+LMR+TAM	0.8328	0.7988-0.8668	<0.001

*Comparison of C-index between the TNM and other prognostic models.

C-index indicates Harrell concordance index

Low CD68+ expression



High CD68+ expression

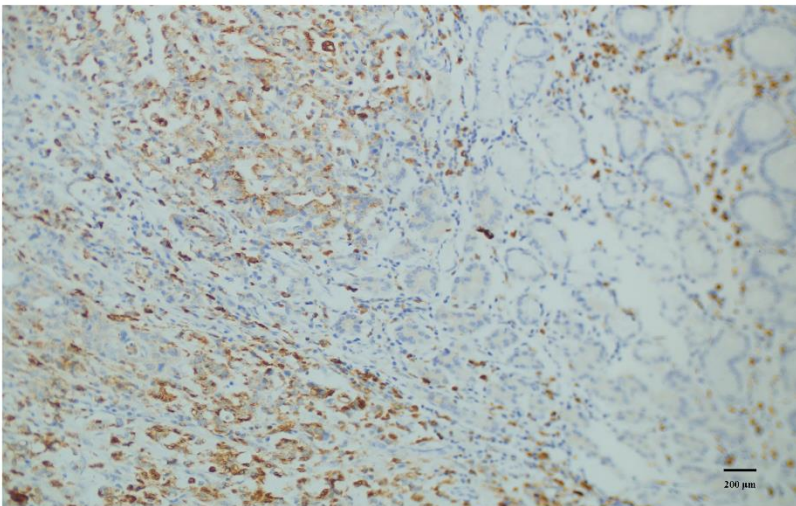


Fig.S1

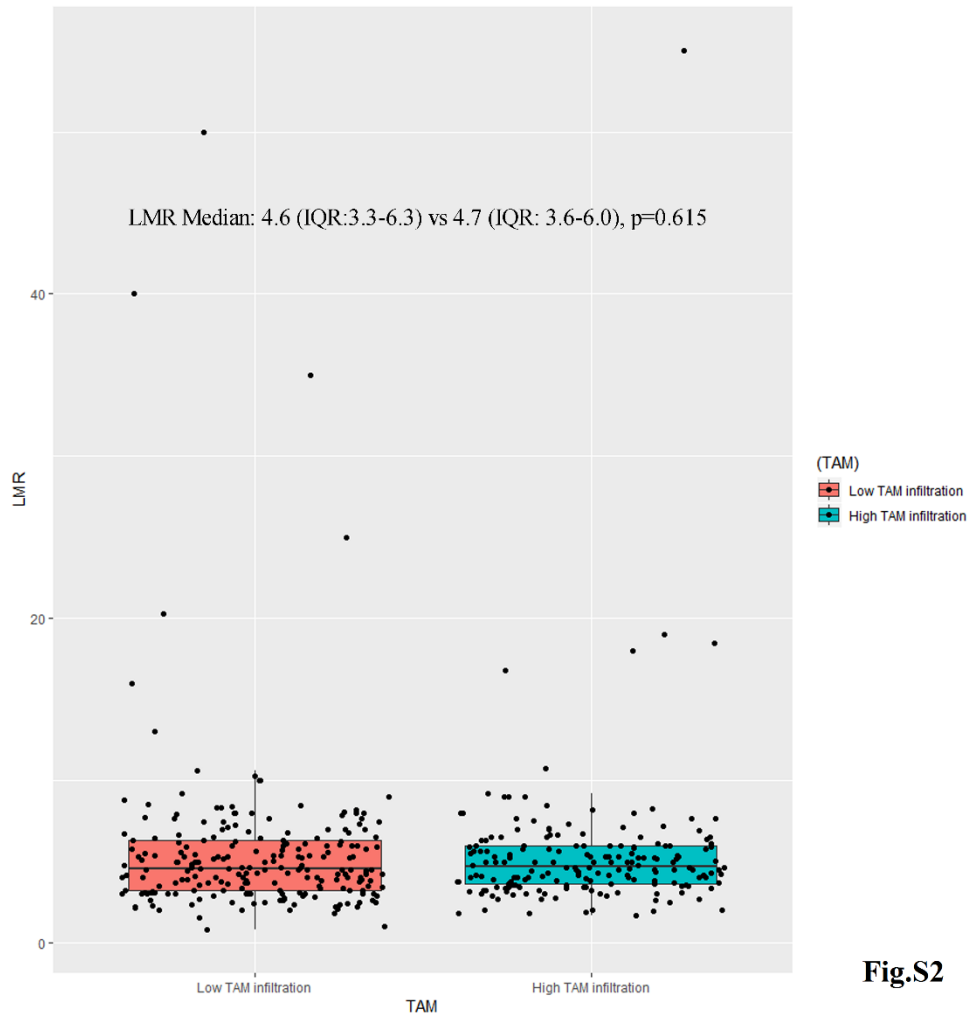


Fig.S2

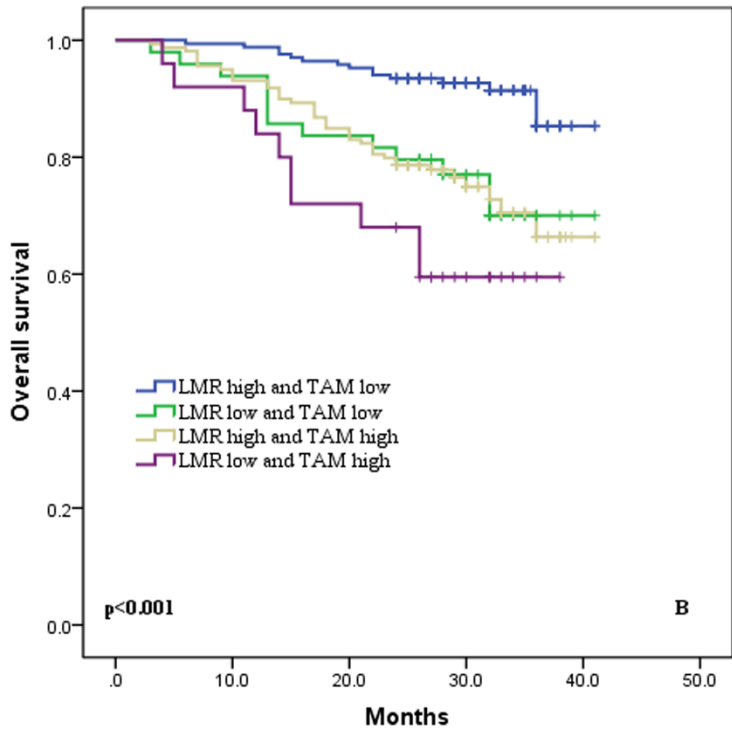
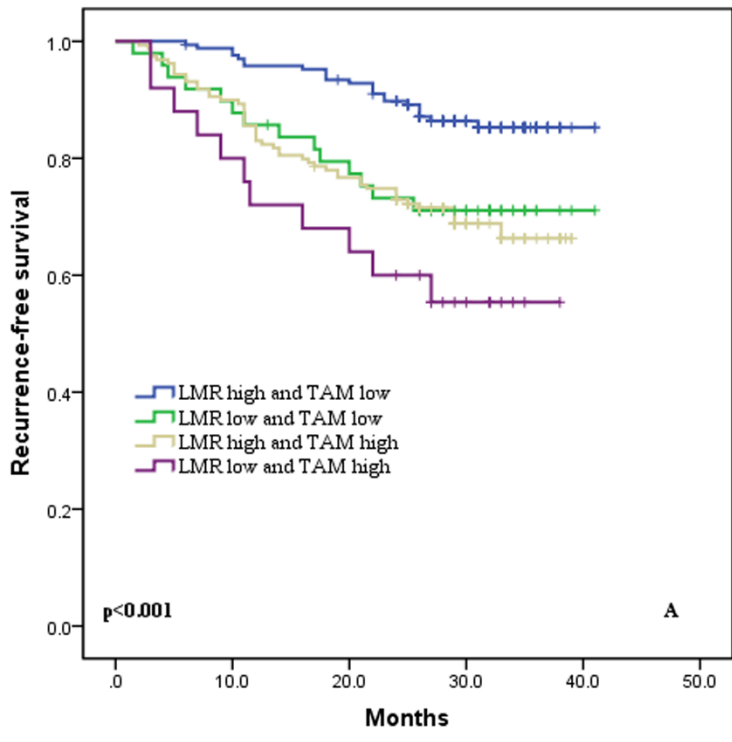


Fig. S3