

## Supplementary Material

Table S1. NPC patients' characteristics

	Parameters	n
Gender	Female	23
	Male	27
Age (years)	<50	20
	≥50	30
Smoking history	Yes	31
	No	19
Clinical stage	I	12
	II	11
	III	16
	IV	11
T stage	T1	14
	T2	13
	T3	14
	T4	9

**Table S2. A list of primers used in the reactions**

---

NT5E(CD73) promoter-F	5'-GTACCCACAGATACCAGGCAATG-3'
NT5E(CD73) promoter-R	5'-GTTTGTGGTTGCGCTAGCTC-3'
NT5E(CD73) promoter-mut-F	5'-ATGGCCCCCAGGCCTGGATGATTTACAATCTCCGAACCTCAG-3'
NT5E(CD73) promoter-mut-R	5'-AATCATCCAGGCCTGGGGGCCATGCAGTTTGGGAG-3'
NT5E(CD73)-P1-F	5'-CTTGGCCTAAGGACAGACTGG 3'
NT5E(CD73)-P1-R	5'-AGTTCAAGCTTCGCAAACCTGG-3'
NT5E(CD73) -P2-F	5'-CATTAGAGGGTGTCCCAGAAGC-3'
NT5E(CD73)-P2-R	5'-TGACCTGAGGTTCCGGAGATTG-3'
NT5E(CD73)-P3-F	5'-CTCAGCTCGCTCATCTTTCTTC-3'
NT5E(CD73)-P3-R	5'- CTCTGAGTCTCGCCTCATTCG-3'
GAPDH-F	5'-ATTCCACCCATGGCAAATTC-3'
GAPDH-R	5'-TGGGATTTCCATTGATGACAAG-3'

---

## Supplementary Figures legends

**Figure S1. Protein chip detection in four matched NPC tissues and paracancerous tissues**

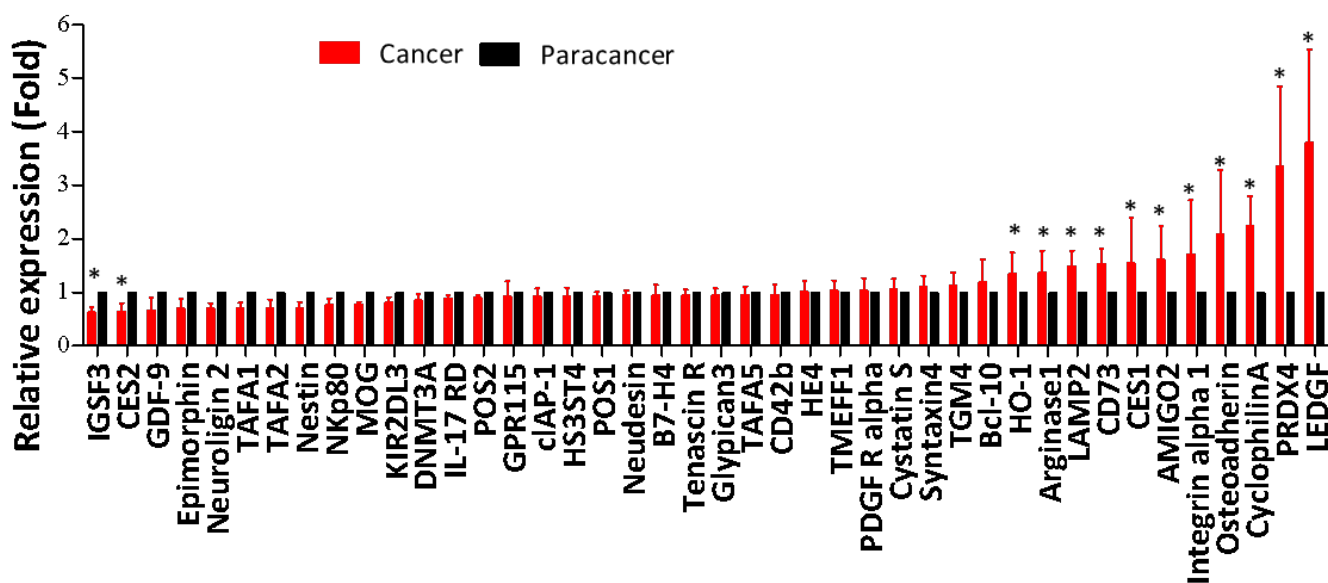
**Figure S2. MSC promote NPC cell lines CNE-1 and CNE-2 cell proliferation**

Cell viability of CNE-1 (A) and CNE-2 (B) under treatment of MSC-conditioned medium. \*,  $P < 0.05$ ; \*\*,  $P < 0.01$ ; \*\*\*,  $P < 0.001$ .

**Figure S3. Detection of cytokine secreted by MSC via cytokine antibody array.**

Detection of supernatant cytokine secreted by CNE-2, MSC, CNE-2 mixed MSC co-culture(1:1) (A). Differential cytokine analysis between CNE-2 mixed MSC co-culture(1:1) and CNE-2 (B). Differential cytokine analysis between CNE-2 mixed MSC co-culture(1:1) and MSC (C). Differential cytokine analysis between MSC and CNE-2 (D).

## Supplementary Figures



**Figure S1. Protein chip detection in four matched NPC tissues and paracancerous tissues**

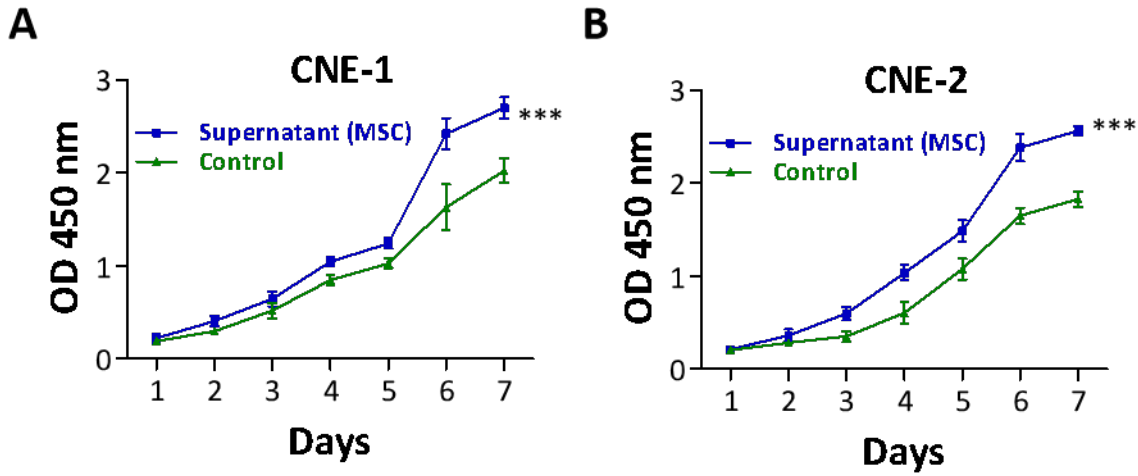


Figure S2. MSC promote NPC cell lines CNE-1 and CNE-2 cell proliferation

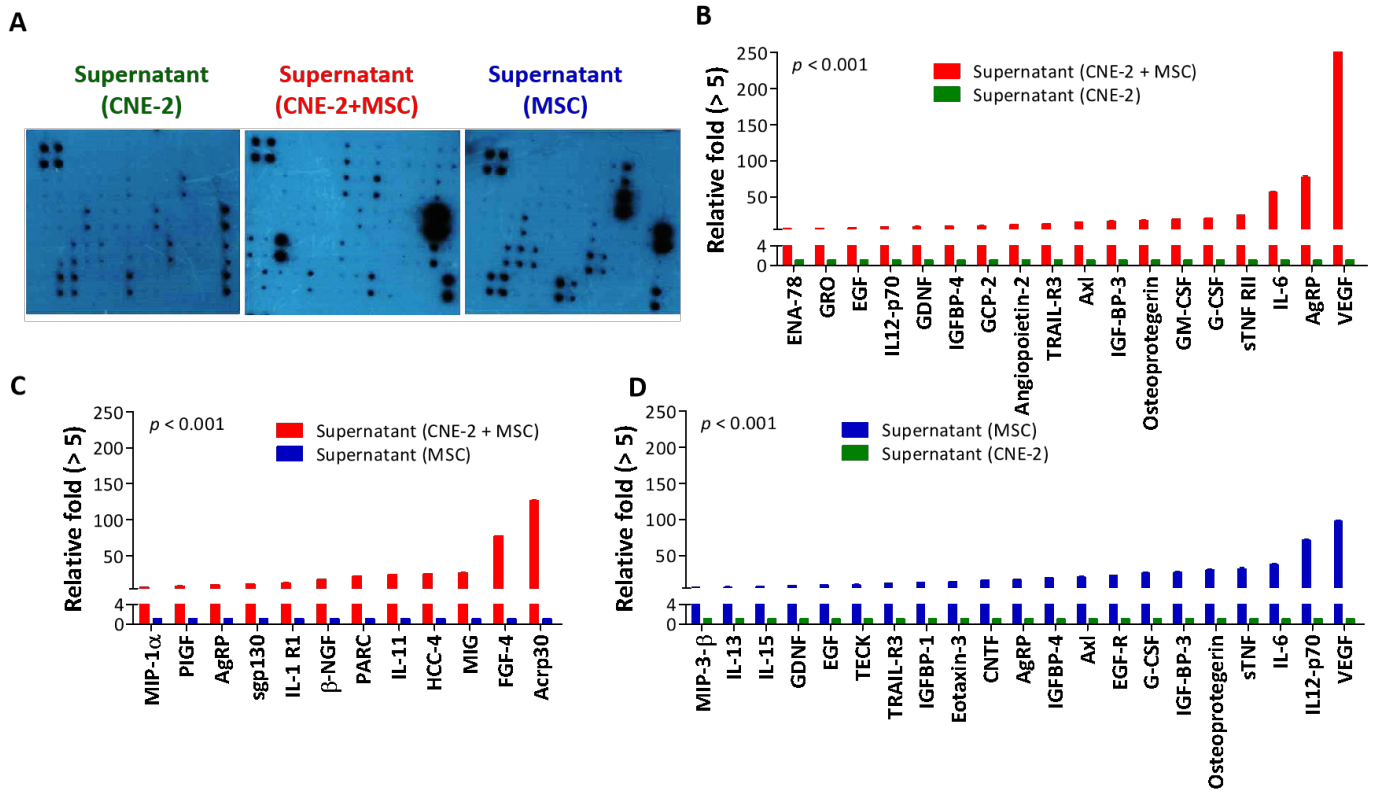


Figure S3. Detection of cytokine secreted by MSC via cytokine antibody array.