

Figure S1

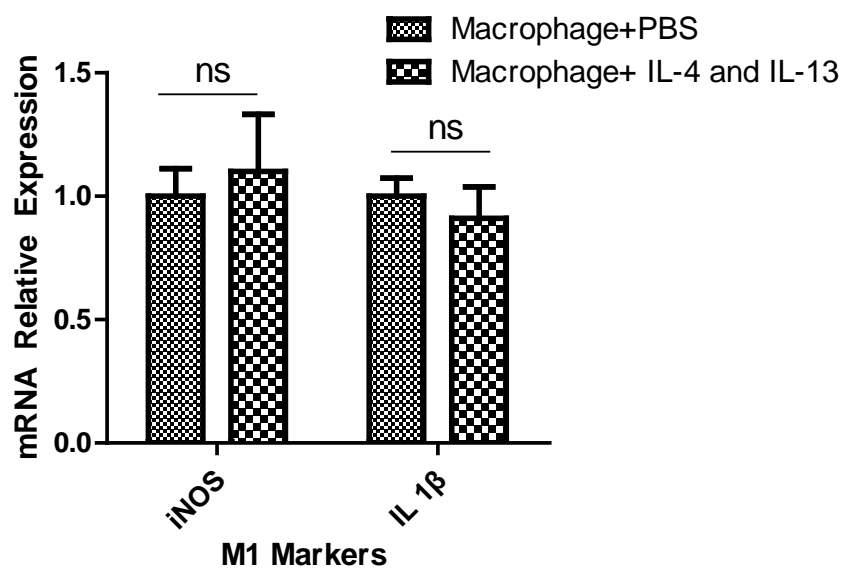
(A) qRT-PCR was applied in macrophages using primers for M1 markers (iNOS and IL-1 β) after induced by IL-4 and IL-13. (B) MMP9 protein stability was checked between control and co-culture groups by using CHX(1ug/ml). (C) The IHC for MMP9 of xenografts in four groups. Quantitative analysis is at the right. All quantifications are mean \pm SD, *p < 0.05, ns: no significant difference.

Figure S2

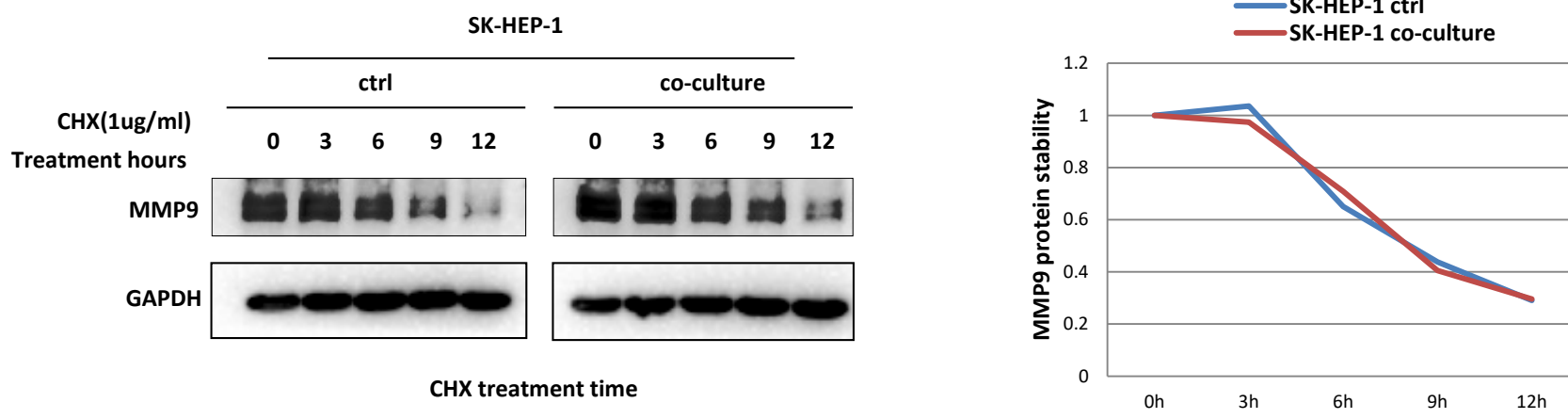
Schematic model of M2 macrophages promote HCC cells invasion and migration via miR-149-5p/MMP9 signaling.

Figure S1

A



B



C

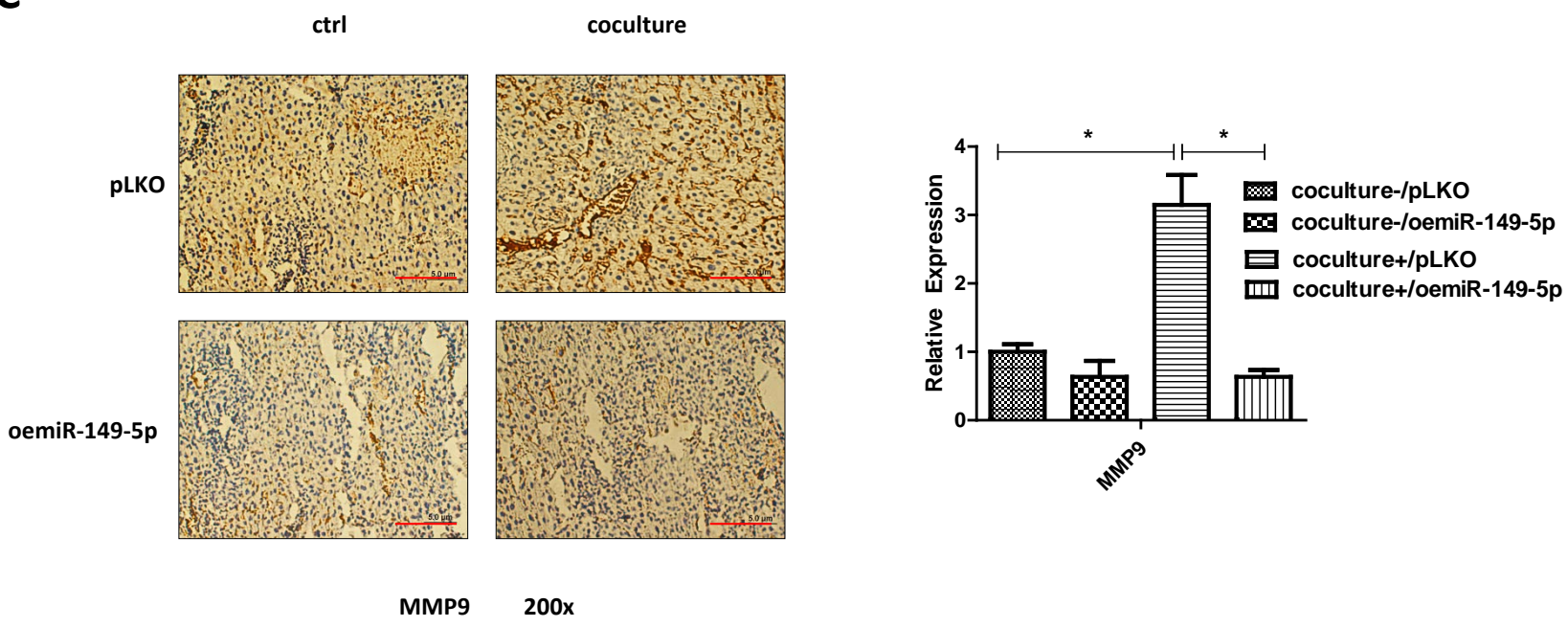


Figure S2

