

Figure S1 Schematic diagram for the procedure of the mouse HCC model and assay

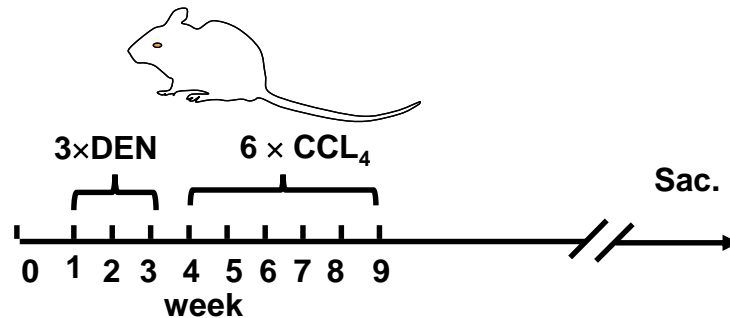


Figure S1. Schematic diagram for the procedure of the mouse HCC model and assay. C57BL/6 mice were injected three times with DEN (100 mg/kg, i.p.) at the age of 2 weeks followed by six injections of CCl₄ (0.5 ml/kg i.p.) and sacrificed at different time points after DEN treatment.

Figure S2. AR and ER expression levels in human HCC cell lines

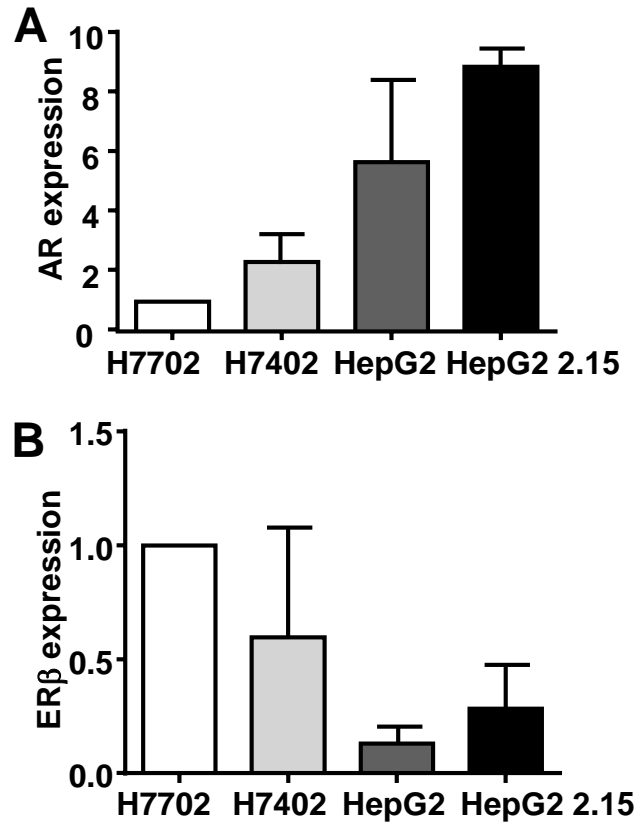


Figure S2. AR and ER are constitutively expressed in human HCC cell lines.

The mRNA levels of AR (A) and ERβ (B) were detected in the indicated cell lines.

Data are represented as mean \pm SEM.