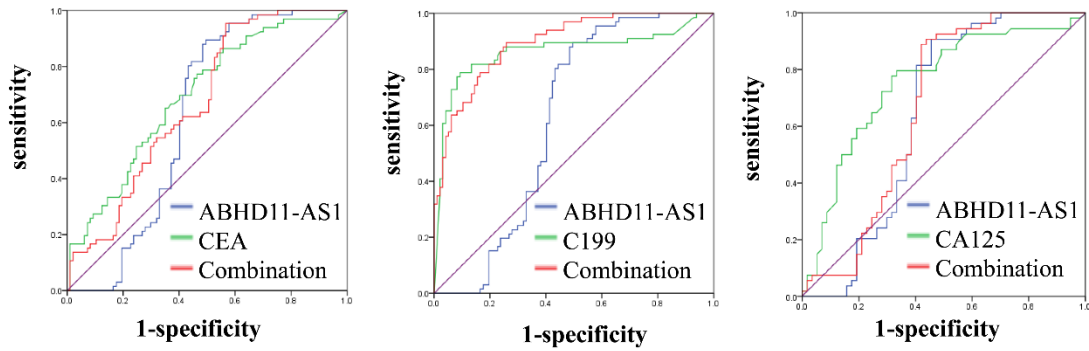


**Figure S1. Evaluation of plasma lncRNAs for diagnosing PC in the validation phase.**

The combination of ABHD11-AS1, LINC00176 and SNHG11 in plasma for detecting PC by ROC curve analysis.

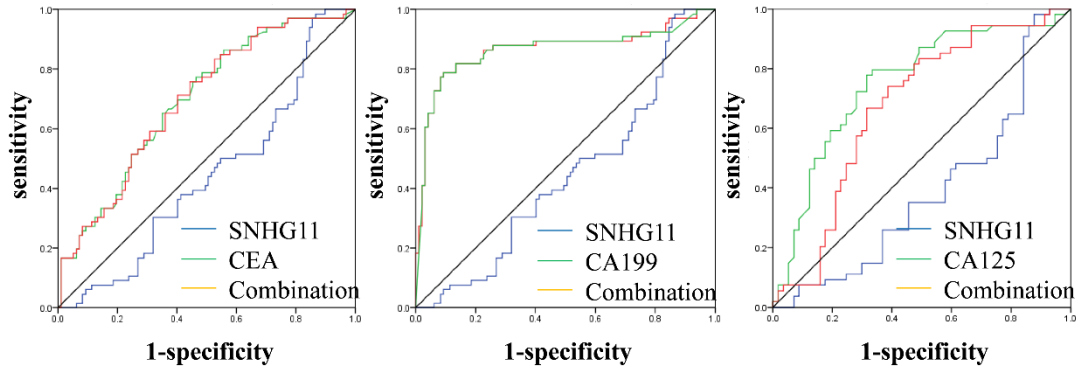
## CP vs EPC



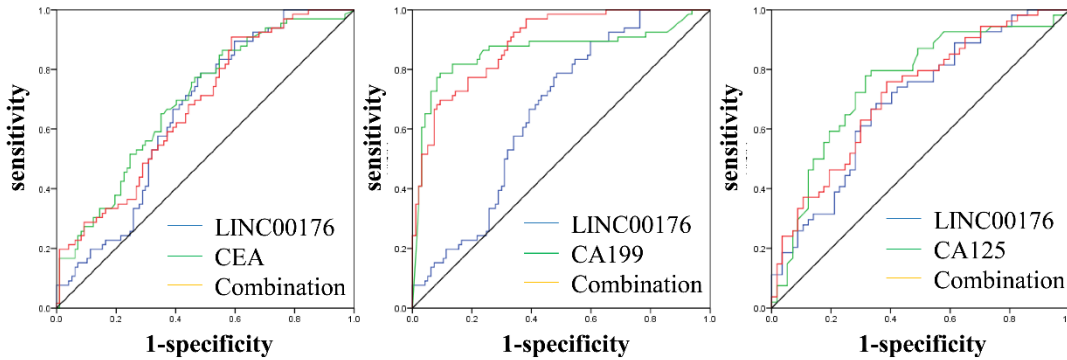
**Figure S2. Evaluation of plasma ABHD11-AS1 for the discrimination of patients with EPC and CP.**

ROC curves of the combination of ABHD11-AS1 with tumor biomarkers to distinguish EPC from CP.

## A Control vs EPC



## B Control vs EPC



**Figure S3. Evaluation of plasma LINC00176 and SNHG11 for the detection of EPC.**

(A) ROC curves of LINC00176 combined with CEA, CA199 or CA125 to distinguish EPC patients from controls. (B) ROC curves of SNHG11 combined with CEA, CA199 or CA125 to distinguish EPC patients from controls.