

Correlations between angiotensin-converting enzyme 2 gene polymorphisms and lung cancer progression in a Chinese Han population

Supplementary Figures

Figure S1. Association of rs11137037 with five-year survival in 695 lung cancer patients. (A and B) Kaplan-Meier analysis of the correlation between rs11137037 genotypes and overall survival in different clinical stages of 695 lung cancer patients. (C and D) Kaplan-Meier analysis of the correlation between rs11137037 genotypes and progression-free survival in different clinical stages of 695 lung cancer patients.

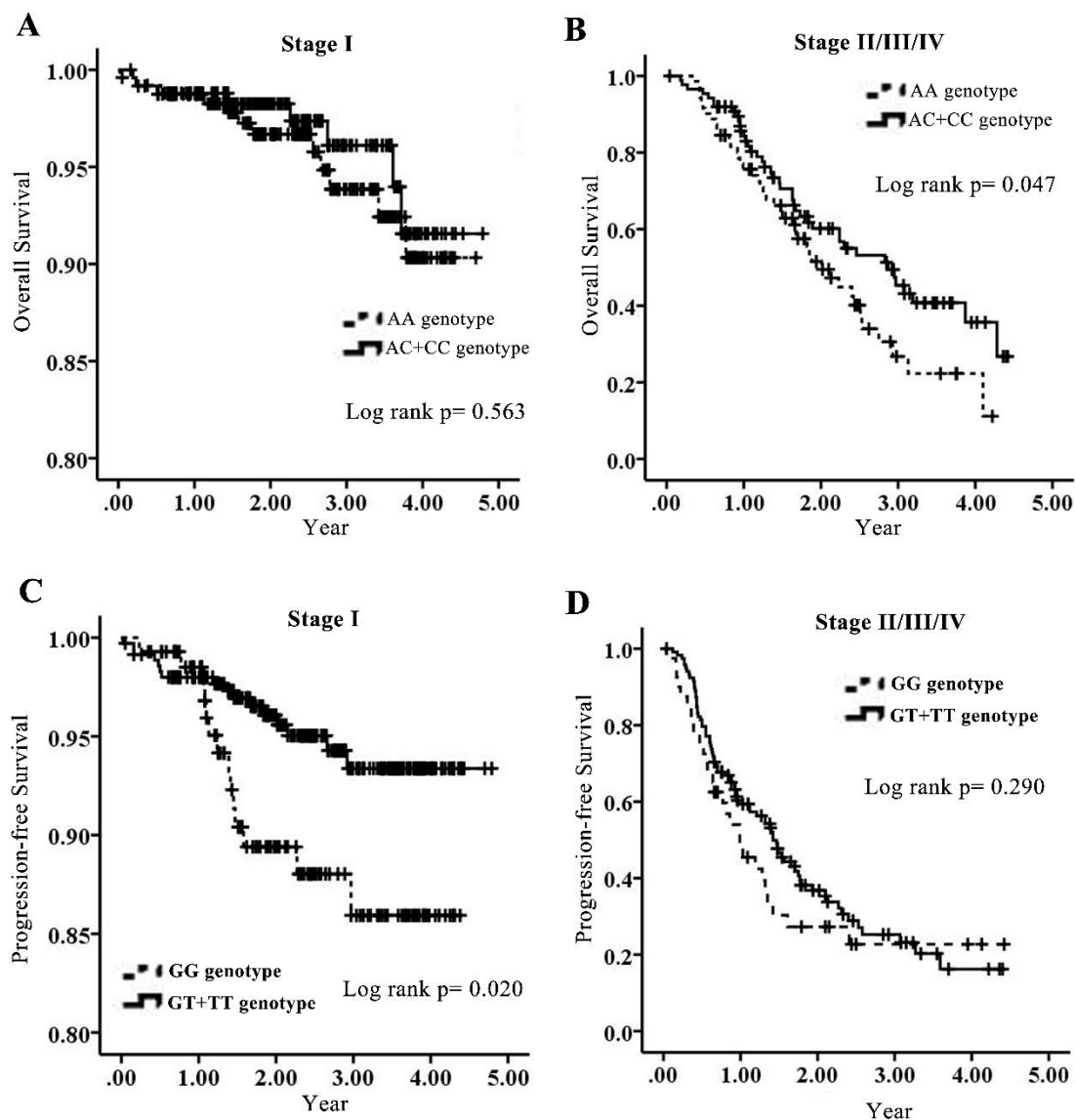


Figure S2. Linkage disequilibrium patterns of five single nucleotide polymorphisms of the Ang2 gene in Chinese Han lung cancer patients.

