

Table S1. Pathological and Molecular characteristic details of the 98 patient samples.

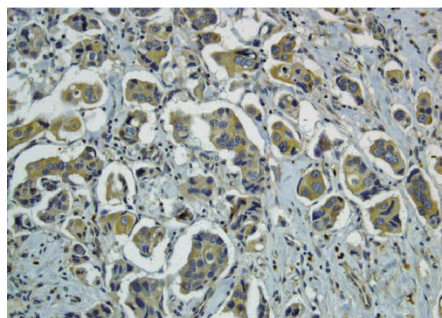
Characteristics	IMPC		IDC-NST		<i>P</i> -value
	n	%	n	%	
Average age (y)		47.5±11.73		50.6±11.36	0.891
Range of age		28-76		33-79	0.621
≤ 60	42	87.5	42	84	
> 60	6	12.5	8	16	
Gender		Female		Female	
Tumor size					0.909
T1	19	39.6	21	42	
T2	25	52.1	24	48	
T3	4	8.3	5	10	
Nodal status					0.005
N0	12	25	19	38	
N1	5	10.4	15	30	
N2	17	35.4	12	24	
N3	14	29.2	4	8	
Grade					0.667
G1	2	4.17	1	2	
G2	32	66.67	30	60	
G3	14	29.16	19	38	
ER status					0.903
Positive	35	72.91	37	74	
Negative	13	27.08	13	26	
PR status					0.966
Positive	29	60.42	30	60	
Negative	19	39.58	20	40	
Plakoglobin					0.004
Positive	34	70.8	21	42	
Negative	14	29.2	29	58	

Distant metastasis	14	29.2	6	12	0.035
--------------------	----	------	---	----	-------

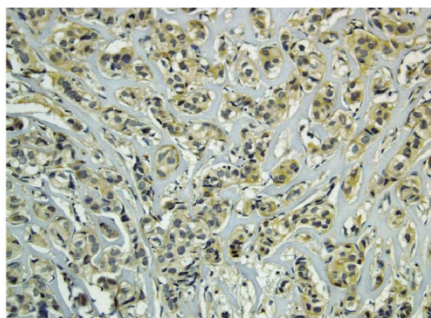
Table S2. Correlation between Plakoglobin and PI3K/pAkt/BCL-2 pathway

IMPC			
	Plakoglobin expression (Number of tissue samples)		<i>P</i> -value
	Negative	Positive	
PI3K p85 expression			<0.001
Negative	12	0	
Positive	2	34	
p-AKT expression			<0.001
Negative	10	4	
Positive	4	30	
BCL-2 expression			<0.001
Negative	11	2	
Positive	3	32	

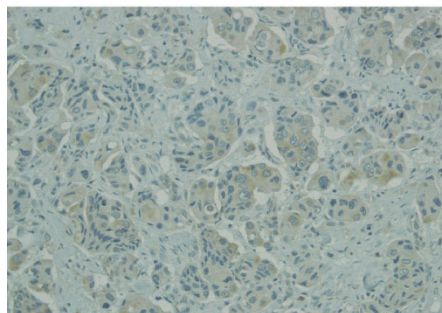
Figure S1:



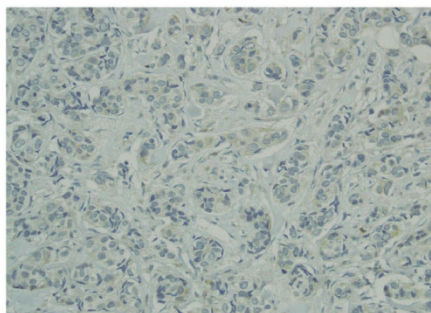
3 Strongly positive membranous and cytoplasm staining in clusters of tumor cells



2 Moderately to strongly positive staining in small clusters of tumor cells



1 Any degree of staining above background, but less than that in '2'



0 No appreciable staining above background

Figure S1: Representative images of IHC staining of plakoglobin protein, showing 0 (absent), 1 (weak), 2 (moderate), or 3 (dense) plakoglobin staining intensity.