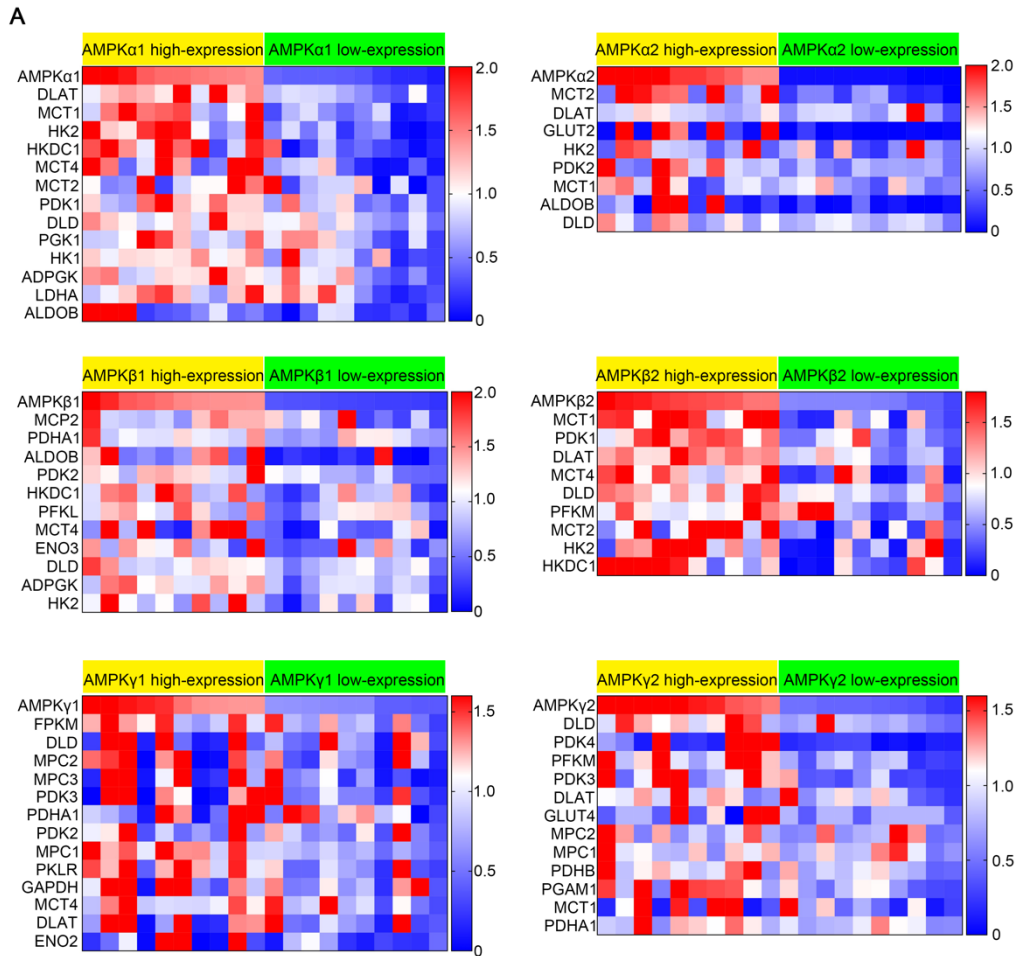


Supplementary figure 1. Compound C dose screening in four cell lines.

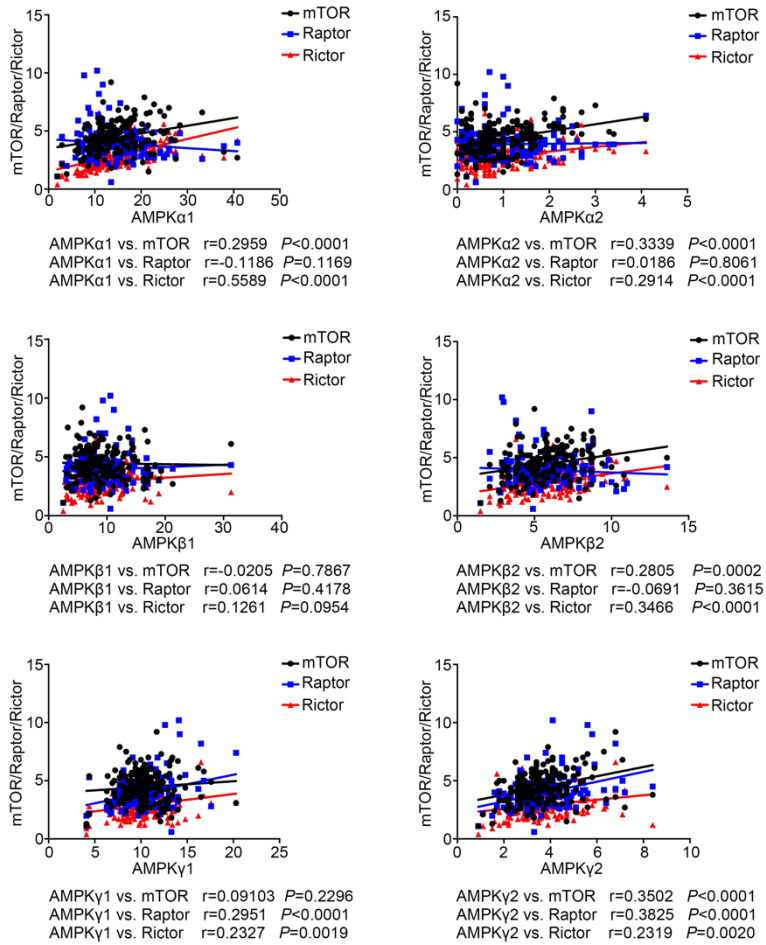
399, 403, 907 and 897 cells were treated with 0 μM, 0.1 μM, 1 μM, 5 μM, 10 μM and 20 μM of Compound C for 24 hours. (a) Relative protein expression of p-Ampk/t-Ampk in four cell lines after Compound C treatment. At the dose of 10 μM, the p-AMPK/t-AMPK expression reduced significantly in all four cell lines. Each experiment was independently repeated at least three times. The bar graphs show the mean ± SD. *, $P < 0.05$, and **, $P < 0.01$.



Supplementary figure 2. Correlation between six AMPK subunits and aerobic glycolytic biomarkers.

(a) Based on TCGA database, correlation analysis was performed between different AMPK subunits ($\alpha 1$, $\alpha 2$, $\beta 1$, $\beta 2$, $\gamma 1$, and $\gamma 2$) and glycolytic biomarkers. Each experiment was independently repeated at least three times.

A



Supplementary figure 3. Correlation between AMPK subunits and mTOR, Raptor, Rictor.

(a) Correlation analysis between six AMPK subunits and mTOR, Raptor, Rictor. Each experiment was independently repeated at least three times. The bar graphs show the mean \pm SD. *, $P < 0.05$, and **, $P < 0.01$.