

Additional file 1:

Table S1. miRNA sequence for MMP7 genes

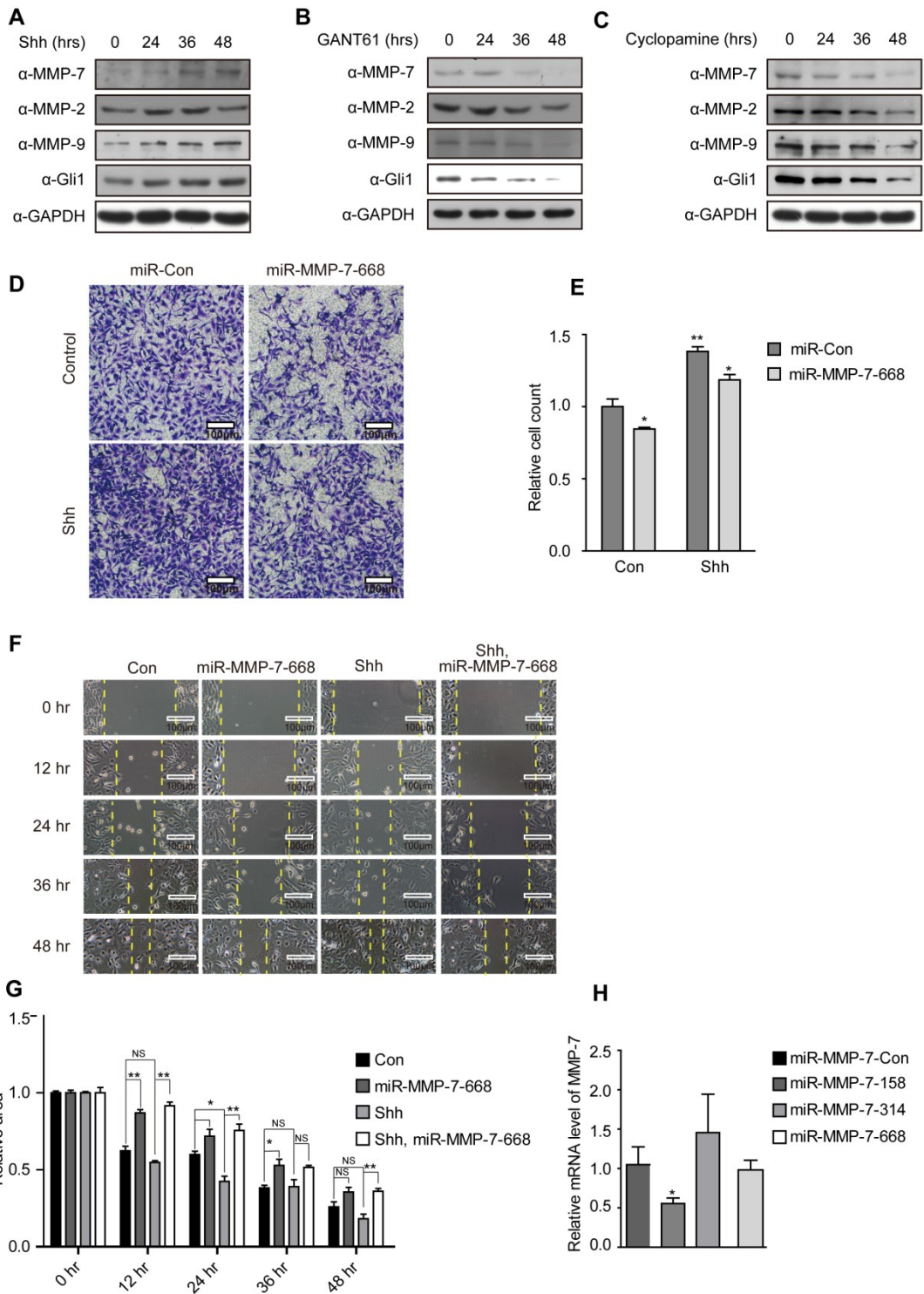
Name	Sequence (5' to 3')
MMP7-158F	5'-TGCTGTGAGTTTGGCTTCTAAACTGTGTTTTGGCCACTGACTGACACAGTTTAAGCCAAACTCA-3'
MMP7-158R	5'-CCTGCTTAAAGCCCAATGTGACCGTCAGTCAGTGGCCAAAACGGTCACATGGTGGGCTTTAAGC-3'
MMP7-314F	5'-TGCTGTGTAGGTGACCACTTTGGAAGGTTTTGGCCACTGACTGACTGACACAGTTTAAGCCAAACTCA-3'
MMP7-314R	5'-CCTGTGTAGGTGACCTTTGGAAGGTCAGTCAGTGGCCAAAACCTTCCAAGTGGTCACCTACAC-3'
MMP7-688F	5'-TGCTGATAGGTTGGATACATCACTGCGTTTTGGCCACTGACTGACGCAGTGATATCCAACCTAT-3'
MMP7-688R	5'-CCTGATAGGTTGGATATCACTGCGTCAGTCAGTGGCCAAAACGCAGTGATGTATCCAACCTATC-3'

Additional file 2:

Table S2. Primers used for real-time PCR amplification

Genes	Forward primer (5' to 3')	Reverse primer (5' to 3')
Gli1	5'-TCCTACCAGAGTCCCAAGTT-3'	5'-CCCTATGTGAAGCCCTATTT-3'
Gli2	5'-CCTGGCATGACTACCACTATGAG-3'	5'-GGCTTGGCTGGCATGTTG-3'
MMP7	5'-TTCCAAAGTGGTCACCTACAG-3'	5'-AGTTCCCCATACAACCTTCCTG-3'
GAPDH	5'-CAGGGCTGCTTTTAACTCTGGT-3'	5'-GATTTTGGAGGGATCTCGCT-3'

Supplementary Figure 1



Supplementary Figure S1

S1A ES-2 cells incubated with N-Shh for 0 hr, 24 hrs, 36 hrs, or 48 hrs were harvested for WB analysis for the detection of Gli1 and MMP-2, MMP-7, MMP-9 expression. Data are shown as mean \pm SD (n = 3).

S1B ES-2 cells treated with GANT61 for 0 hr, 24 hrs, 36 hrs, or 48 hrs were harvested for WB analysis for the detection of Gli1 and MMP-2, MMP-7, MMP-9 expression. Data are shown as mean \pm SD (n = 3).

S1C ES-2 cells treated with Cyclopamine for 0 hr, 24 hrs, 36 hrs, or 48 hrs were harvested for WB analysis for the detection of Gli1 and MMP-2, MMP-7, MMP-9 expression. Data are shown as mean \pm SD (n = 3).

S1D MMP-7-668 constructs knockdown reduces N-Shh-induced invasive ability of SK-OV-3 cells. Scale bar, 100 μ m.

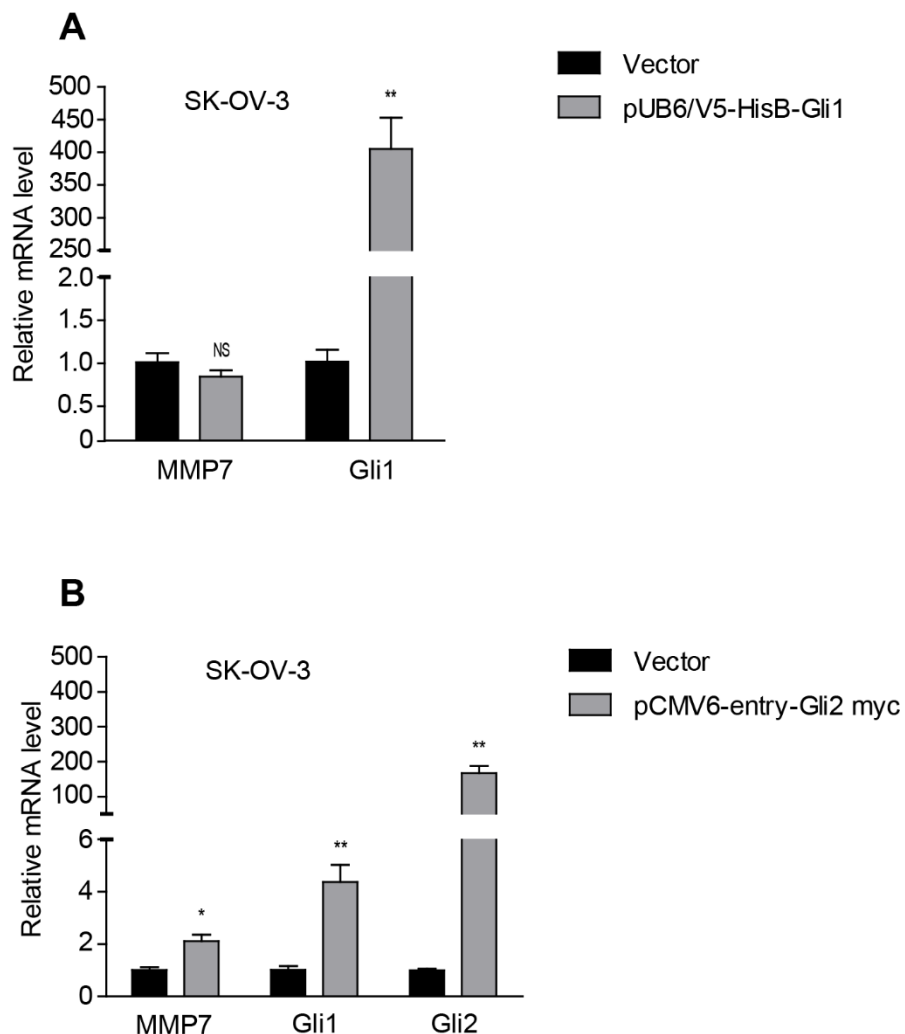
S1E Quantification analysis of the cell counts shown in Figure. S1D. Data are shown as mean \pm SD (n = 3). ****P** <0.01.

S1F MMP-7-668 constructs knockdown inhibits the N-Shh-stimulated migratory ability of SK-OV-3 cells. Scale bar, 100 μ m.

S1G Quantification analysis of the wound areas shown in Figure. S1F using NIH Image-Pro Plus software. Data are shown as mean \pm SD (n = 3). ***P** <0.05, ****P** <0.01.

S1H Validation of the knockdown efficiencies of three miR-MMP-7 constructs (miR-MMP-7-158, miR-MMP-7-314, and miR-MMP-7-668) in SK-OV-3 cells by qPCR.

Supplementary Figure 2



S2A: SK-OV-3 cells transfected with plasmids of pUB6/V5-hisB-Gli1 or empty vector were subjected to real-time PCR analysis for Gli1 and MMP-7. NS: Not significant, ** $P < 0.01$.

S2B: SK-OV-3 cells transfected with plasmids of pcMV6-entry-Gli2-myc or empty vector were subjected to real-time PCR analysis for Gli2, Gli1 and MMP-7. ** $P < 0.01$, * $P < 0.05$.