

**Supplementary Table S1. qMSP primer and qRT primer list**

PCR	Gene	Forward/Reverse	Base pairs	Sequence (5'-3')
qMSP	SALL1	Forward	102	GTCGTCGTTTCGATTTTCGTAA
		Reverse		CGCTTACTTCCTCCGCGACA
qMSP	ACTB	Forward	133	TGGTGATGGAGGAGGTTTAGAAGT
		Reverse		AACCAATAAAACCTACTCCTCCCTTAA
qRT	SALL1	Forward	117	TCTGGGCCTCTGTCTTCCTC
		Reverse		GGCACTGATGAGGAGAAGG
qRT	GAPDH	Forward	138	GCACCGTCAAGGCTGAGAAC

**Supplementary Table S2. SALL1 gene methylation status in 96 matched pairs of tumor and adjacent normal mucosal tissues**

	SALL1 methylation		<i>P</i> -value†
	Present	Absent	
Tumor (96)	39	57	
Normal (96)	9	89	< 0.001

†Fisher's exact probability test.

\*  $P < 0.05$

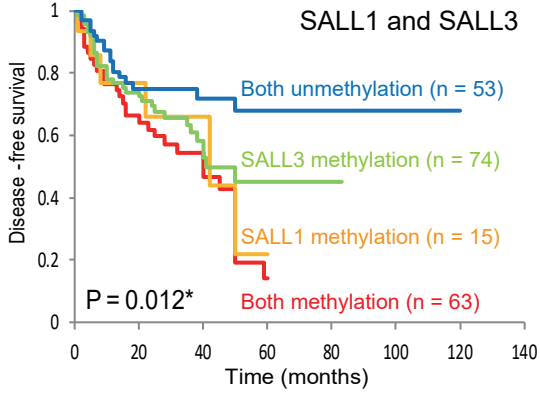
**Supplementary Table S3. *SALL1* Gene Methylation Status in Primary Samples of HNSCC with the methylation of other tumor suppressor genes.**

Patient and tumor characteristics ( <i>n</i> = 205)	Methylation		<i>P</i> -value
	Present ( <i>n</i> = 74)	Absent ( <i>n</i> = 131)	
<i>SALL3</i> methylation			
Yes (127)	56	71	0.003*
No (78)	18	60	
<i>CDH1</i> methylation			
Yes (103)	51	52	< 0.001*
No (102)	23	79	
<i>RASSF1A</i> methylation †			
Yes (74)	35	39	1
No (131)	39	92	
<i>P16</i> methylation †			
Yes (58)	16	42	0.146
No (147)	58	89	
<i>MGMT</i> methylation †			
Yes (59)	23	36	1
No (146)	51	95	
<i>DAPK</i> methylation †			
Yes (92)	39	53	0.108
No (113)	35	78	
<i>DCC</i> methylation †			
Yes (113)	45	68	0.244
No (92)	29	63	
<i>CDH13</i> methylation †			
Yes (53)	23	30	1
No (152)	51	101	
<i>COL1A2</i> methylation †			
Yes (80)	30	50	1
No (125)	44	81	

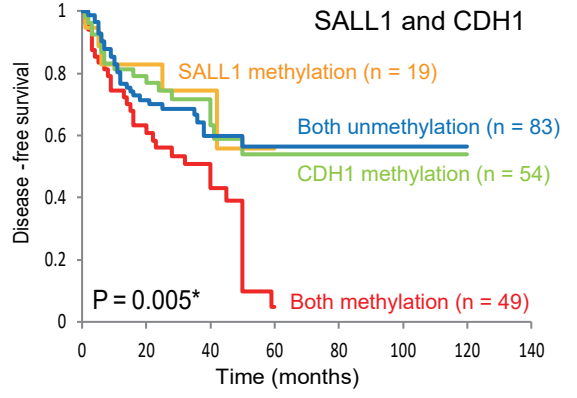
†Fisher's exact probability test \* *P* < 0.05

**Supplementary Fig. S1. Kaplan–Meier survival curves for patients with head and neck squamous-cell carcinoma (HNSCC).** A Joint analysis of the two genes showed a significant trend for decreased disease-free survival (DFS) as the number of methylated genes increased. DFS for HNSCC patients relative to **(A)** *SALL1* and *SALL3* methylation status and **(B)** *SALL1* and *CDH1* methylation status.

A



B



**Supplementary Fig. S2. *SALL1* DNA methylation and expression data for head and neck squamous-cell carcinoma (HNSCC) from TCGA database.** *SALL1* DNA methylation profiles of HNSCC and normal tissue samples ( $P < 0.001$ ). HNSC, head and neck squamous cell carcinoma; BLCA, bladder urothelial carcinoma; BRCA, breast carcinoma; COAD, colon adenocarcinoma; LUAD, lung adenocarcinoma; LUSC, lung squamous cell carcinoma; PAAD, pancreatic adenocarcinoma; PRAD, prostate adenocarcinoma; READ, rectum adenocarcinoma.

Supplementary Figure S2 Kiyoshi Misawa

