

Supplements

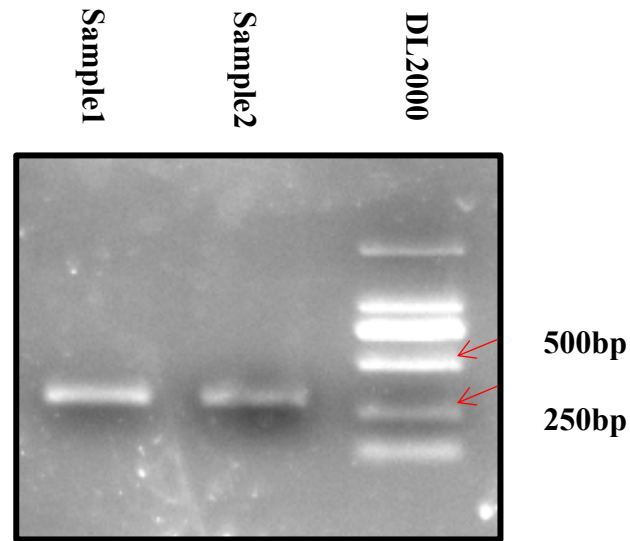


Figure. S1 The sheered efficiency of chromatin DNA examined by agarose gel electrophoresis

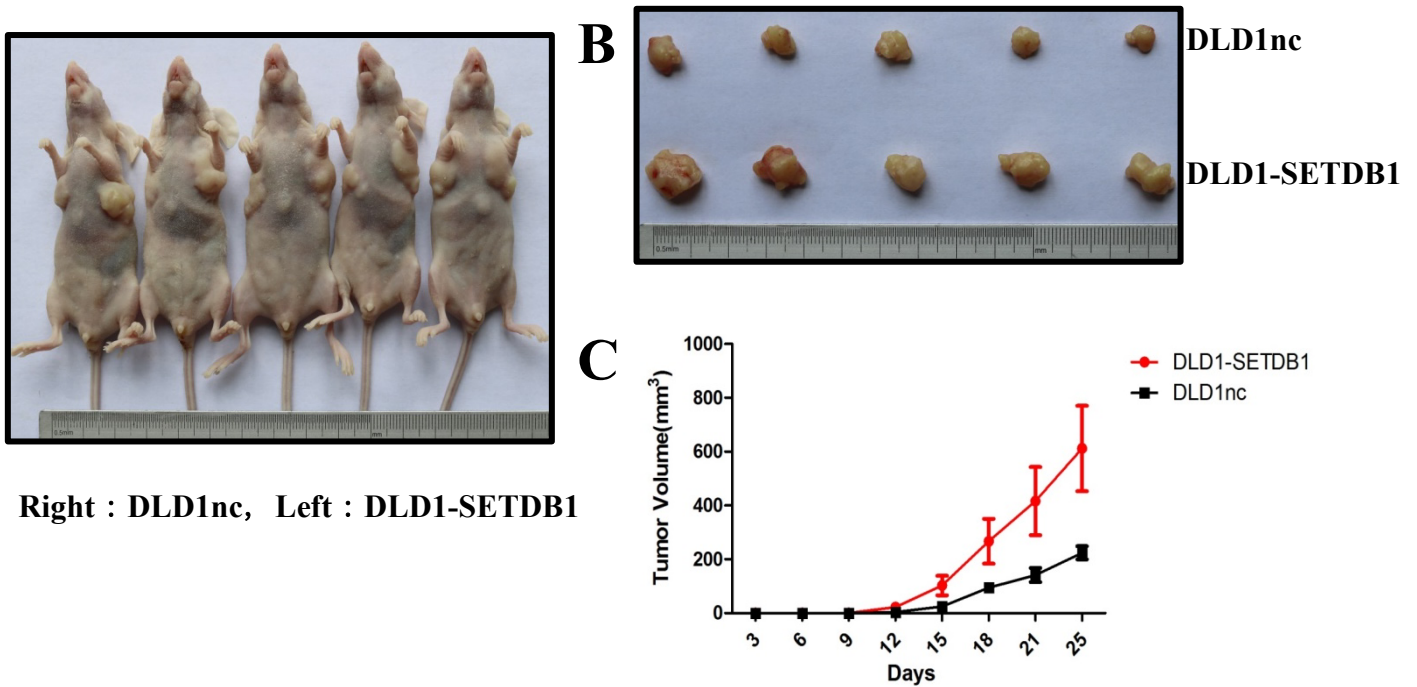
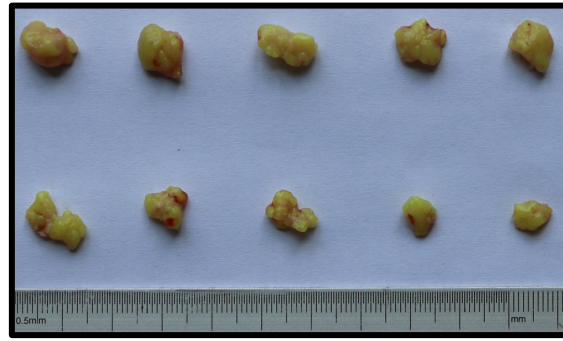


Figure. S2 Forced SETDB1 promotes the tumorigenicity of DLD1 cells in vivo



Right : SW620nc, Left : SW620-shRNA



SW620-shRNA

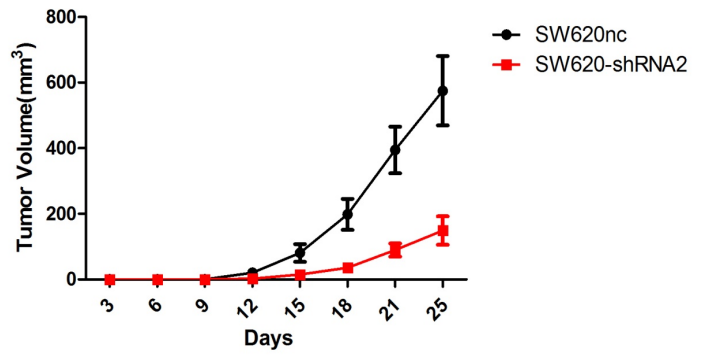


Figure. S3 Silencing SETDB1 inhibits the tumorigenicity of SW620 cells in vivo

Table. S1 Lentivirus interference sequence

Name	Sequence
shSETDB1-1	CCGGCAGTGACTAATTGTGAGTCTTCTCGAGAAGACTCACAATTAG TCACTGTTTTTTG
shSETDB1-2	CCGGGCTCAGATGATAACTTCTGTACTCGAGTACAGAAGTTATCAT CTGAGCTTTTTG

Table. S2 TP53 (p53alpha) Promotor sequence



Genome=hg38;chr17-:7688792- 7687280;TSS=7687550;Upstream=1242,Downstream=270;Length=1513
<p>CCCCCTTTCGGGAGGCGGTGGCATCAGTTCAGAGTCCGCATTTTTATTTCATCGGGGAAGCGTGGGGA GAAGGATGGGCTGGAGCTGGGTCTGGTCTGAAGGACAGCAGTCCGGAGCTAACGGTTGAGTCTCC AAAGTCTTCATACTGCAGAGGAAGCACAGCGGAGATTAGCCTCAGCCAGGATGGCTTCGAAGTTCTC AGGGATCCGACGCAGAGCTAAAGAAACCCACCTGTGCTTCCCTCCTTCTGGGAGTAGGCAGAAGA CTCCCGGAGGAGAGGCGAACAGCGGACGCCAA</p> <p>TTCTTTTGAAGCACTGTGTTCTTAGCACCGGGTTCGCTACGGGCCTCTTGTGTCGCGGGATTTC GGTCCACCTTCCGATTGGGCCCGGCATCCCGGATCAGATTCGCGGGCGACCCACGGAACCCGCG GAGCCGGGACGTGAAAGTTAGAAGTTTTCCGTTCCCATCAAGCCCTAGGGTCCCTCGTGGCTGCT GGGAGTTGTAGTCTGAACGTTCTATCTTGCGGAGAAGCGCCTACGCTCCCCCTACCGAGTCCCGCG GTAATTTTAAAGCACTGCACCGCCCCCGCGCCTGCAGAGGGCGCAGCAGGTCTTGCACCTCT TCTGCATCTCATTCTCAGGCTTCAGACCTGTCTCCCTCATTCAAAAATATTTATTATCGAGCTCTTAC TTGCTACCCAGCACTGATATAGGCACTCAGGAATACAACAATGAATAAGATAGTAGAAAAATTCTAT ATCCTCATAAGGCTTACGTTTCCATGTAAGCAATGAACAAATAAATCTTATCAGAGTGATAAG GGTTGTGAAGGAGATTAATAAGATGGTGTGATATAAAGTATCTGGGAGAAAACGTTAGGGTGTGA TATTACGGAAAACCTTCTAAAAAATGACATTTAACTGATGAGAAGAAAGGATCCAGCTGAGAGCA AACGCAAAAGCTTCTTCTTCCACCTTCATATTTGACACAATGCAGGATTCCTCCAAAATGATTTC ACCAATTCTGCCCTCACAGCTCTGGCTTGCAGAATTTCCACCCCAAAATGTTAGTATCTACGGCACC AGGTCGGCGAGAATCCTGACTCTGCACCTCCTCCCAACTCCATTTCTTTGCTTCTCCGGCAGGC GGATTACTTGCCCTTACTTGTGCATGGCGACTGTCCAGCTTTGTGCCAGGAGCCTCGCAGGGGTTGAT GGGATTGGGGTTTTCCCTCCCATGTGCTCAAGACTGGCGCTAAAAGTTTTGAGCTTCTAAAAGTCT AGAGCCACCGTCCAGGGAGCAGGTAGCTGCTGGGCTCCGGGGACACTTTGCGTTCGGGCTGGGAG CGTGCTTTCCACGACGGTGACACGCTTCCCTGGATTGGGTAAGCTCCTGACTGAACTTGATGAGTCT CTCTGAGTCACGGGCTCTCGGCTCCGTGATTTTCAGCTCGGGAAAATCGCTGGGGCTGGGGTGG</p>

G

Table. S3 Primers used for the CHIP experiment

Primers	Sequence	Product
P _T 1-F	(19) TGGCATCAGTTCAGAGTCCGCATTTTAA	226bp
P _T 1-R	GAGGGAAGCACAGGTGGGTTTCTTTAGC (244)	
P _T 2-F	(284) CGAACAGCGGACGCCAATTCTTTGAAA	201bp
P _T 2-R	CTAGGGCTTGATGGGAACGGGAAACCTT (484)	
P _T 3-F	(502) GGGAGTTGTAGTCTGAACGCTTCTATCT	235bp
P _T 3-R	CCTGAGTGCCTATATCAGTGCTGGGTAG (736)	
P _T 4-F	(764) AAATTCTATATCCTCATAAGGCTTACGT	203bp
P _T 4-R	AGCTGGATCCTTTCTTCTCATCAGTTAA (966)	
P _T 5-F	(1008) TTGACACAATGCAGGATTCCTCCAAAAT	203bp
P _T 5-R	CAGTCGCCATGACAAGTAAGGGCAAGTA (1210)	
P _T 6-F	(1254) GGTTTTCCCCTCCCATGTGCTCAAGACT	213bp
P _T 6-R	CGAGAGCCCGTGACTCAGAGAGGACTCA (1466)	