

Figure S1

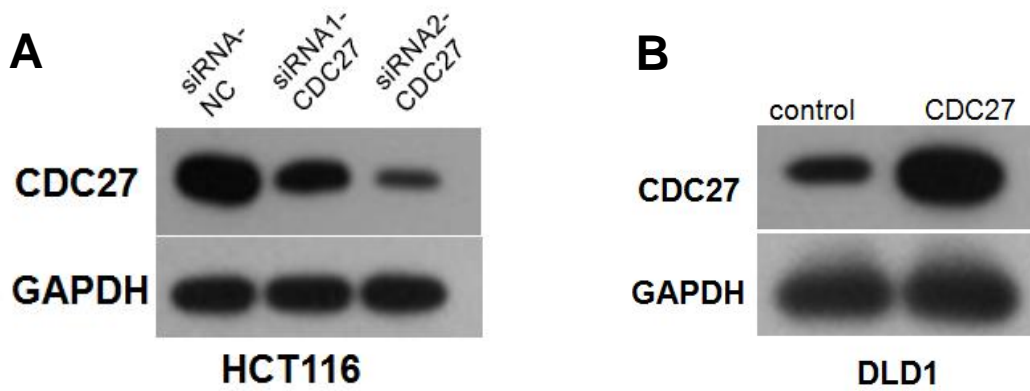


Figure S1. (A-B) The efficient suppression or overexpression of CDC27 was identified by western blotting.

Table S1

Primer sequences for real-time PCR

Gene	Sense primer	Antisense primer
CDC27	ACTAAACCACTATGCTTACCGAGATG	CACTCCACCAGATAAGATTTGTTCC
ZO-1	CAACATACAGTGACGCTTCACA	CACTATTGACGTTTCCCCACTC
ID1	CGTGCTGCTCTACGACATGA	GCTCCAACTGAAGGTCCCTG
E-Cadherin	CGAGAGCTACACGTTCACGG	GGGTGTCGAGGGAAAAATAGG
ZEB1	TTACACCTTTGCATACAGAACCC	TTTACGATTACACCCAGACTGC
Snail	ACTGCAACAAGGAATACCTCAG	GCACTGGTACTTCTTGACATCTG
CD44	CTGCCGCTTTGCAGGTGTA	CATTGTGGGCAAGGTGCTATT
GAPDH	CCCACATGGCCTCCAAGGAGTA	GTGTACATGGCAACTGTGAGGAGG
