

Supporting Information

Figure S1: Expression of FLAG-tagged Notch1, Notch2 NICD and CSL in BxPC3 pancreatic cancer cells. BxPC3 cells were transfected with the expression plasmids. Two days after transfection, FLAG-tagged Notch1 NICD, Notch2 NICD and CSL in the cell lysates were detected by Western blotting with anti-FLAG antibody. (TIF)

Figure S2: Screenshot of genome browse for genes HCRTR1.

Figure S3: The KEGG cancer pathway and Notch1 target genes. Notch1 target genes were imported into the KEGG and extracted the KEGG “cancer pathway” as a significant pathway, as listed in Table 2. Notch1 target genes are highlighted in red. (TIF)

Figure S4: The KEGG cancer pathway and Notch2 target genes. Notch2 target genes were imported into the KEGG and extracted the KEGG “cancer pathway” as a significant pathway, as listed in Table 3. Notch1 target genes are highlighted in red. (TIF)

Figure S1

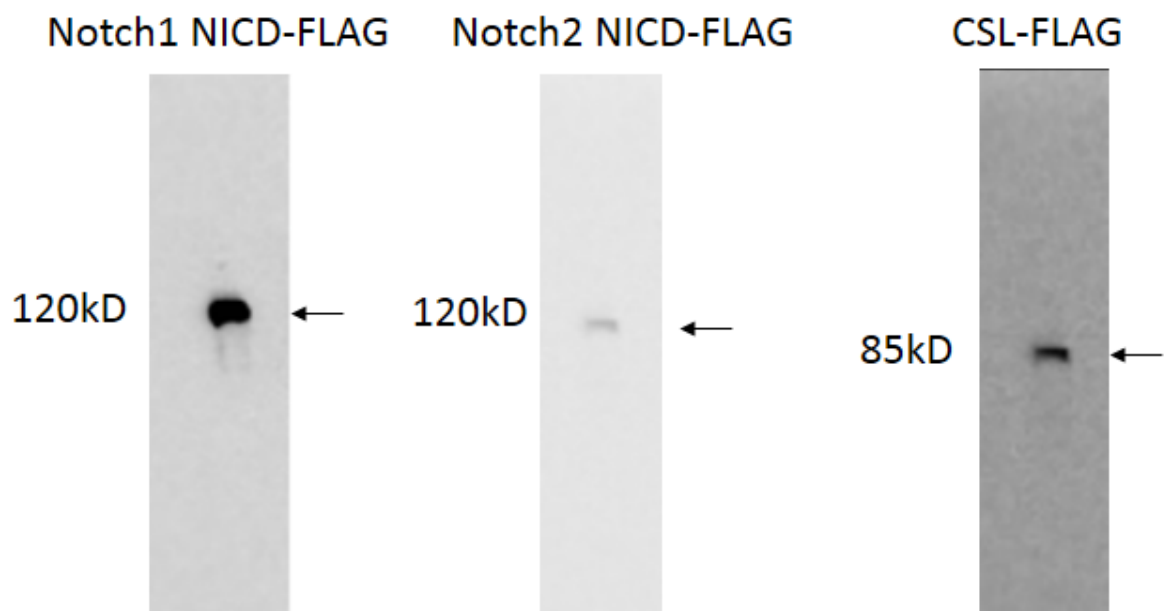


Figure S2

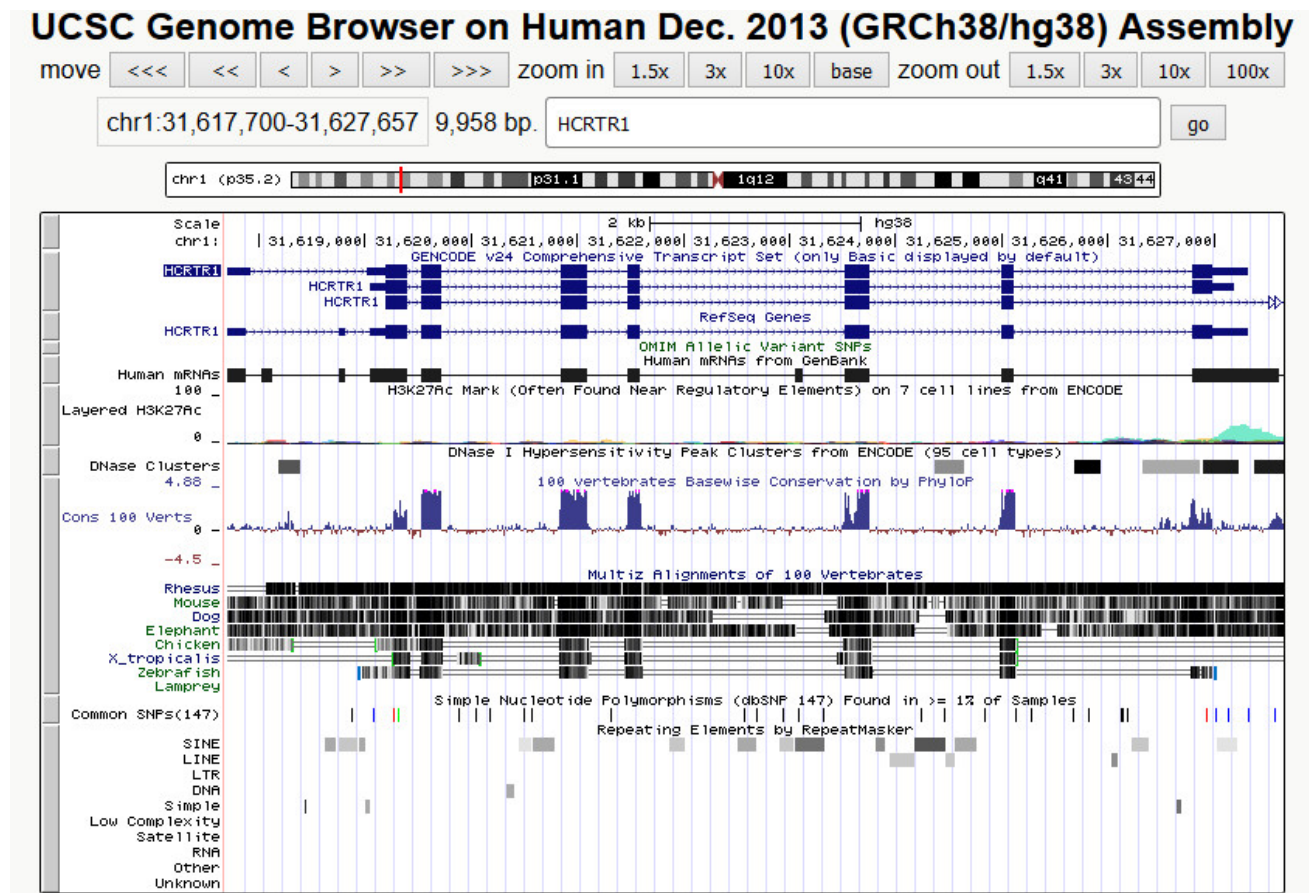


Figure S3

