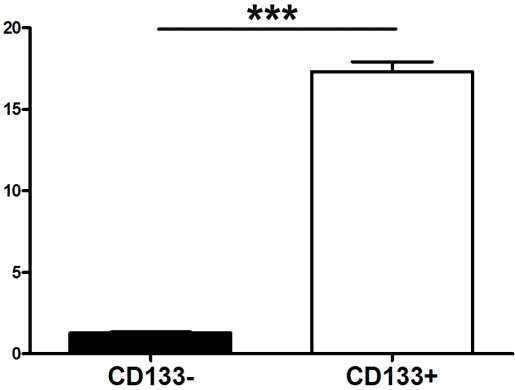
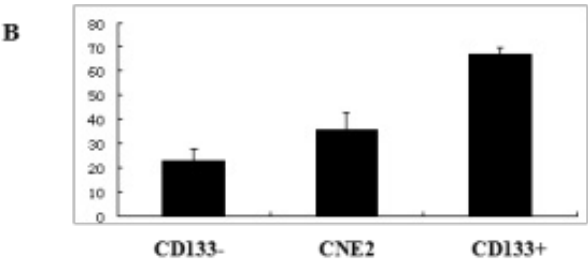
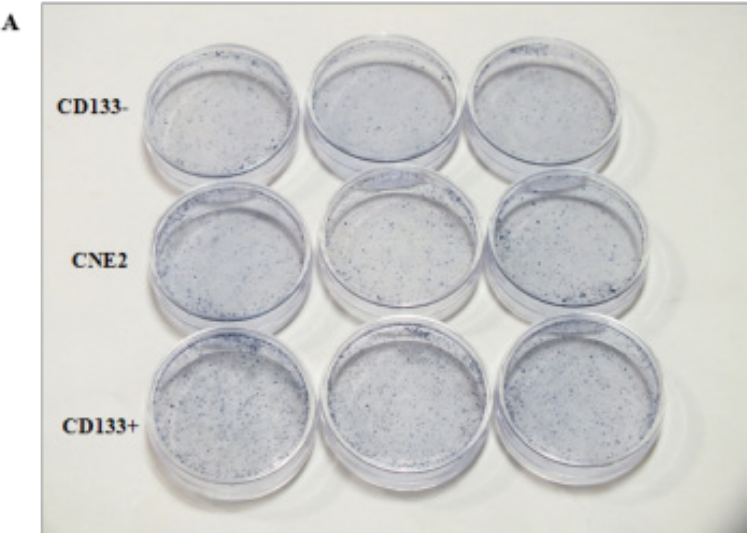


**Supplemental Figure 1** Analysis of CD133 expression in CD33+ and CD133- cells by the quantitative Real-time PCR.



**Supplemental Figure 2 A**, Plate colony formation efficiency of CD133- cells, CNE2 and CD133+ cells. **B**, Comparison of plate colony formation efficiency.



**Supplemental table 1 Expression of CD133 in CD133+ and CD133-CNE2 cells**

	CD133 $\Delta$ Ct	$2^{-\Delta\Delta\text{Ct}}$	<i>F</i> value	<i>P</i> value
CD133-	13.100 $\pm$ 0.321		33.010	0.001
CD133+	10.160 $\pm$ 0.572	7.656		

**Supplemental table2 Comparison of plate colony formation efficiency among CD133- cells, CNE2 and CD133+ cells.**

	Mean $\pm$ Std	<i>F</i> value	<i>P</i> value
CD133-	22.667 $\pm$ 5.132	68.045	0.000
CNE2	36.667 $\pm$ 7.234		
CD33+	72.667 $\pm$ 3.055		