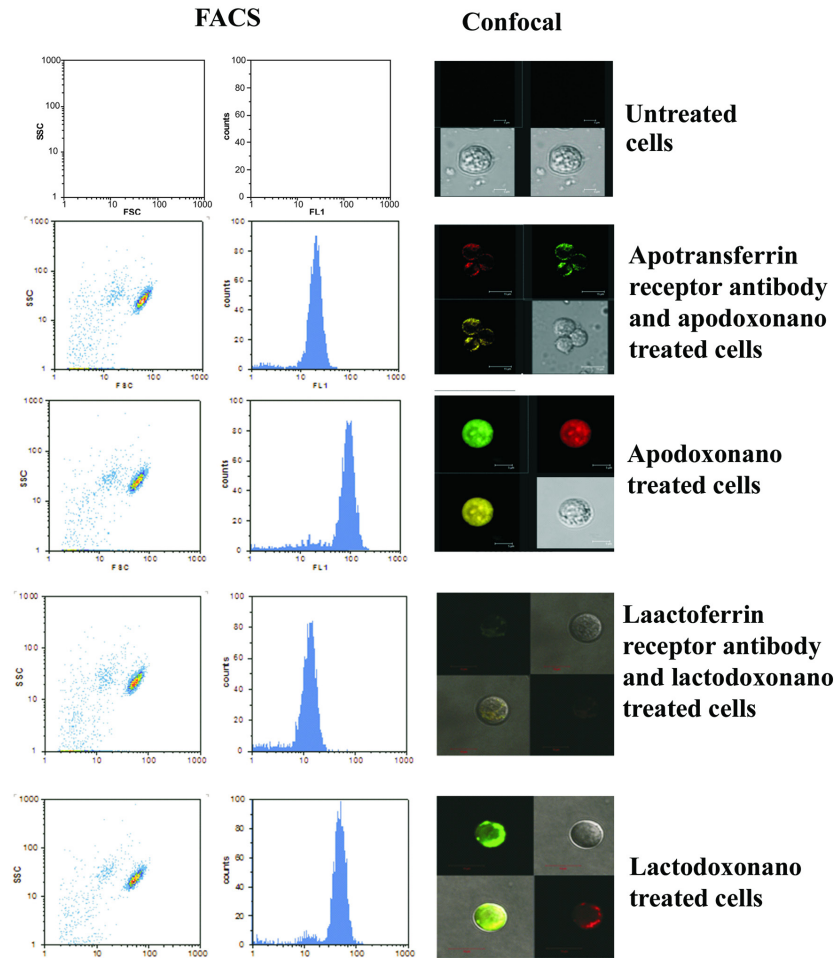


Figure 1S



Supplementary Figure 1. Receptor mediated entry of nanoformulations: The protein nanoparticles were labelled with Rhodamine ¹²³ emits green fluorescence whereas doxo emits red fluorescence. When the cells were incubated with apodoxonano and lactodoxonano, they emitted red and green fluorescence indicating the delivery of the nanoformulations through the receptor. This is confirmed by blocking the cells with the antibodies against apotransferrin and lactoferrin receptors where the cells ceased the fluorescence. The left panel shows the flow cytometric images (shift in the fluorescence peak) whereas the right one shows the confocal images of the same.