

**Title:** Predicting early refractoriness of transarterial chemoembolization in patients with hepatocellular carcinoma using a random forest algorithm:  
a pilot study

*Brief introduction of the authors*

1. The first author, Zhi-Min Zou (E-mail: zoumimi@csu.edu.cn):

<sup>a</sup> Department of Radiology, the Second Xiangya Hospital of Central South University, Changsha, 410011, China

<sup>f</sup> Department of Radiology, Hunan Children's Hospital, Changsha, 410007, China

2. The second author, Tian-Zhi An (E-mail: Dr.an@foxmail.com):

<sup>d</sup> Department of Interventional Radiology, the Affiliated Hospital of Guizhou Medical University, Guiyang, 550002, China

3. The third author, Jun-Xiang Li (E-mail: 357936984@qq.com):

<sup>e</sup> Department of Interventional Radiology, Guizhou Medical University Affiliated Cancer Hospital, Guiyang, 550004, China

4. The fourth author, Zi-Shu Zhang (E-mail: zishuzhang@csu.edu.cn):

<sup>a</sup> Department of Radiology, the Second Xiangya Hospital of Central South University, Changsha, 410011, China

5. The fifth author, Yu-Dong Xiao (E-mail: xiaoyudong222@csu.edu.cn):

<sup>a</sup> Department of Radiology, the Second Xiangya Hospital of Central South University, Changsha, 410011, China

<sup>b</sup> Clinical Research Center for Medical Imaging in Hunan Province, Changsha, 410011, China

<sup>c</sup> Department of Radiology Quality Control Center, Changsha, 410011, China

6. The sixth author, Jun Liu (E-mail: junliu123@csu.edu.cn):

<sup>a</sup> Department of Radiology, the Second Xiangya Hospital of Central South University, Changsha, 410011, China

<sup>b</sup> Clinical Research Center for Medical Imaging in Hunan Province, Changsha, 410011, China

<sup>c</sup> Department of Radiology Quality Control Center, Changsha, 410011, China

Dr. Yu-Dong Xiao and Dr. Jun Liu contribute equally to the manuscript

Correspondence to Dr. Yu-dong Xiao, Department of Radiology, the Second Xiangya Hospital of Central South University, No.139 Middle Renmin Road, 410011, Changsha, China (E-mail: xiaoyudong222@csu.edu.cn) and Dr. Jun Liu, Department of Radiology, the Second Xiangya Hospital of Central South University, Changsha, 410011, China (E-mail: Junliu123@csu.edu.cn)

Funding information: The project is supported by the following funders: 1. Clinical Research Center for Medical Imaging in Hunan Province (Grant No. 2020SK4001); 2. Science and Technology Project of Hunan Province (Grant No. 2020SK53407)

## **Abstract**

**Purpose:** To develop and validate a random forest (RF) based predictive model of early refractoriness to transarterial chemoembolization (TACE) in patients with unresectable hepatocellular carcinoma (HCC).

**Methods:** A total of 227 patients with unresectable HCC who initially treated with TACE from three independent institutions were retrospectively included. Following a random split, 158 patients (70%) were assigned to a training cohort and the remaining 69 patients (30%) were assigned to a validation cohort. The process of variables selection was based on the importance variable scores generated by RF algorithm. A RF predictive model incorporating the selected variables was developed, and five-fold cross-validation was performed. The discrimination and calibration of the RF model were measured by a receiver operating characteristic (ROC) curve and the Hosmer-Lemeshow test.

**Results:** The potential variables selected by RF algorithm for developing predictive model of early TACE refractoriness included patients' age, number of tumors, tumor distribution, platelet count (PLT), and neutrophil-to-lymphocyte ratio (NLR). The results showed that the RF predictive model had a good discrimination ability, with an area under curve (AUC) of 0.863 in the training cohort and 0.767 in the validation cohort, respectively. In Hosmer-Lemeshow test, the RF model had a satisfactory calibration with P values of 0.538 and 0.068 in training cohort and validation cohort, respectively.

**Conclusion:** The RF algorithm-based model has a good predictive performance in the prediction of early TACE refractoriness, which may easily be deployed in clinical routine and help to determine the optimal patient of care.

**Keywords:** Hepatocellular Carcinoma; Transarterial Chemoembolization; Refractoriness; Predictive Model; Random Forest

## **Introduction**

Hepatocellular carcinoma (HCC) is one of the most common malignancies in the alimentary system [1]. Transarterial chemoembolization (TACE) is a standard of care for intermediate-stage HCC [1-3]. However, not all HCC patients can respond well to TACE because the patients selected for TACE correspond to a highly heterogeneous population, covering a wide range of tumor burden, liver function, and treatment history, and some patients even show TACE failure at the very beginning of their treatment [4, 5]. It is recommended that HCC patients with TACE refractoriness should switch to systemic therapy as soon as possible, because repeat TACE is no longer beneficial for such patients [6, 7]. Thus, appropriate judgement of TACE refractoriness is crucial. Several previous studies have reported predictive factors of TACE refractoriness [8, 9], however, the potential prediction of early TACE refractoriness have not been identified.

With the development of machine learning (ML) algorithms, an increasing number of predictive models have been established for predicting the therapeutic outcome for HCC patients. ML algorithms can simulate human learning to detect hidden patterns within the data, which is showed a better predictive performance over the traditional statistical method. Random forest (RF) is regarded as one of the most promising ML algorithm [10], and it is consisted of an ensemble learning approach of multiple unique decision trees. Although RF algorithm has previously been utilized

to predict the prognosis of HCC patients after various treatment modalities [11-15], it has not yet been used to predict the early TACE refractoriness. Therefore, the purpose of the present study is to develop and validate a predictive model of early TACE refractoriness based on an RF algorithm.

## **Materials and methods**

### *Patients*

This retrospective study was approved by the institutional review board of the Second Xiangya Hospital and was performed in accordance with the Declaration of Helsinki. The requirement for written informed consent was waived by the institutional review boards due to the retrospective nature of the present study.

A total of 736 consecutive patients with unresectable HCC who underwent TACE at three institutions between January 2015 and April 2021 were included. According to the Barcelona-Clinic-Liver-Cancer (BCLC) staging system, TACE is recommended as an alternative treatment for patients with BCLC-A or a standard treatment for patients with BCLC-B, therefore, the inclusion criteria and exclusion criteria are made as BCLC staging system suggested. The inclusion criteria were as follows: (1) compensated liver function (Child-Pugh class A or B); (2) Eastern Cooperative Oncology Group (ECOG) criteria score of 0; and (3) at least two consecutive TACE sessions performed, or although only one TACE session performed, complete response (CR) achieved after the procedure. The exclusion criteria were as follows: (1) patients for whom had portal venous tumor thrombus (n=236); (2) patients for whom had distant metastasis (n=119); (3) patients for whom the interval between the first and second TACE sessions was longer than 3 months (n=59); (4) patients lost to follow-up (n=35); (5) patients for whom follow-up computed tomography

(CT) or magnetic resonance (MR) imaging was performed more than 3 months after TACE (n=28); (6) patients with infiltrative HCC (n=19); and (7) patients who were initially treated with a combination of TACE and other locoregional therapies such as ablation (n=13). The flowchart of the study population is shown in [Figure 1](#).

### *TACE procedure*

The TACE procedures were discussed with the tumor board prior to administration for each patient. Celiac trunk and superior mesenteric arteriography, as well as indirect portography, were performed to visualize the variations in hepatic arterial anatomy and to evaluate the patency of the portal vein. Either a 2.2 French (Carnelian, Tokai Medical Products, Japan) or a 2.7 French (Progreat, Terumo Medical Corporation, Japan) coaxial microcatheter was placed into the tumor-feeding arteries with the assistance of cone beam computed tomography (CBCT) if needed. Chemoembolization was performed using either up to 15 ml emulsion of iodized oil (Lipiodol, Guerbet, France) mixed with epirubicin (Shandong New Time Pharmaceutical Co., Ltd., China) or drug-eluting beads (DEB) (CalliSpheres Beads, Jiangsu Hengrui Medicine Co., Ltd., China) loaded with epirubicin. The oil-epirubicin emulsion was created using the water-in-oil technique by mixing iodized oil with a distilled water solution containing a drug cocktail of dissolved epirubicin at a ratio of 3:1. The dosage of epirubicin in conventional TACE was 50-75 mg/m<sup>2</sup> body surface area, while in DEB-TACE, the dosage of epirubicin ranged from 50 to 150 mg. In conventional TACE, gelfoam slurries were injected to embolize the proximal tumor feeders after the oil-epirubicin emulsion was injected, while in DEB-TACE, no additional embolization was performed. The size of DEBs varied from 100-300  $\mu$ m and 300-500  $\mu$ m. The technical endpoint of TACE was defined as the reduction in arterial inflow to the

tumor and tumor devascularization. Changes in chemotherapy drugs, embolic agents, or tumor-feeding artery reselection were made for the second TACE procedure when an insufficient response after the first TACE occurred. All TACE procedures were performed successfully according to the Society of Interventional Radiology (SIR) guidelines [16].

#### *Follow-up schedule*

The time interval between two consecutive TACE procedures was 1-3 months. Contrast-enhanced CT/MR was carried out 1 month before and 1-3 months after TACE. The treatment responses were assessed according to the modified response evaluation criteria in solid tumors (mRECIST).

#### *Definition of early TACE refractoriness*

In accordance with the Japan Society of Hepatology (JSH) and the Liver Cancer Study Group of Japan (LCSGJ) consensus guidelines [6, 7], TACE refractoriness was recorded when any of the following criteria were met: (1) intrahepatic lesion: two or more consecutive ineffective responses was observed within the treated tumors (viable lesion >50%) or two or more consecutive progressions in the liver (including presence of new lesion compared to that before the previous TACE procedure), even after changing the chemotherapeutic agents or reanalysis of the feeding artery on response evaluation CT/MR after 1-3 months following adequately performed selective TACE; (2) alpha-fetoprotein (AFP): continuous elevated levels of tumor markers right after TACE; (3) vascular invasion was observed; and (4) extrahepatic spread was observed. **According to the mRECIST criteria, the viable lesions >50% [17] is defined as the longest diameter of the viable tumor greater than 50% after TACE to that of**

the previous TACE. Presence of new lesions [17] is defined as the newly developed intrahepatic HCC lesions greater than 10 mm after TACE. Vascular invasion is defined as the newly developed vascular invasion after TACE [17, 18]. The extrahepatic spread [17, 19] is defined as the newly developed extrahepatic metastasis after TACE.

In the present study, early TACE refractoriness was defined when patients met the TACE refractoriness criteria within the first two consecutive TACE sessions.

#### *Candidate predictors*

The selection of candidate predictors was based on literature and other potential clinically meaningful parameters. The demographic characteristics included age and sex. The clinical data included the presence of an underlying liver disease, the Child-Pugh class, and the BCLC stage. The laboratory parameters included the initial AFP level ( $<400/\geq 400$  ng/mL), neutrophil (NEUT) to lymphocyte (LY) ratio (NLR), platelet count (PLT), albumin (ALB,  $<35/\geq 35$  g/L), and total bilirubin level (TBIL,  $<34.2/\geq 34.2$  umol/L).

The radiological features included the tumor distribution (unilobar/bilobar), whether up-to-seven criteria were met, the number of tumors (solitary/2-3/ $>3$ ), the size of the largest tumor ( $<50/50-100/>100$  mm), vascularity of the largest tumor (hyper-/hypo- vascularity), and tumor enhancement pattern (homogeneous/heterogenous). Hypervascularity of the tumor was defined as an increase in the density/signal of the tumor compared to that of the surrounding liver tissue in the arterial phase in the CT/MR images [20]. A heterogeneous enhancement pattern of the tumor was defined as a nonenhanced area within the tumor in the arterial phase, whereas a homogeneous enhancement pattern was defined as the lack of



a nonenhanced area [21]. Two abdominal radiologists with 22 and 19 years of experience in liver imaging who were blinded to all the clinical data independently reviewed the baseline CT/MR imaging data. The above-mentioned radiological features were assessed. The radiological results were finalized by discussion between the two radiologists.

### *Process of model establishment*

The process of RF model establishment was as follows:

#### 1. Preprocessing

Due to the small sample size and the inherent sparsity of some features in the present study, the Min-Max Normalization method of feature scaling using Python software was used to preprocess dataset. This method will not change the essence of the data, and it also can speed up the calculation of RF model [22]. Using randomized sampling method for splitting data, 158 of the 227 patients were assigned to the training cohort for creating RF model and the remaining 69 patients were assigned to the validation cohort (approximately 30%).

#### 2. Variable's selection (training cohort)

After preprocessing, the next step is to select final variables included in the model. Because a minimum events per variables (EPV) of 10 is required to train an adequate predictive model, the variables selection was based on the importance scores of RF algorithm to select maximal number of variables [23, 24]. Unlike traditional variable selective method, such as univariate or multivariate chi-square test, RF algorithm can be more flexible, which calculate the change of Gini index of each variable [10]. After selecting variables, the variation inflation factor (VIF) values

(VIF<5) were calculated to measure the multicollinearity among the selected variables.

### 3. Training and validation of the RF model

The RF model was developed using Python 3.6.5 with the “ensemble” module in the “sklearn” library, and this model was based on 5 potential predictors. The “GridSearchCV” module was used to adjust the parameters of the RF model automatically, and the best parameters were identified by this module, which included max depth = 5, min samples leaf = 10, min samples split = 5 and n-estimators = 80. In the process of adjusting the parameters, 5-fold cross-validation was used to prevent overfitting of the RF model and to maintain the stability and practicality of the model. The final two output nodes represented TACE non-refractoriness (=0) and TACE refractoriness (=1). The RF models were developed and validated with Python software (version 3.6.5, <http://www.Python.org>).

### 4. Performance measurement

Discrimination performance was assessed based on the receiver operating characteristic (ROC) curve and the corresponding AUC value. The calibration performance was validated by the Hosmer-Lemeshow test, in which a P value >0.05 indicated good performance.

### *Statistical analysis*

Statistical analysis was performed using a statistical software (SPSS version 20, International Business Machines Corporation, the United States) or Python software (version 3.6.5, <http://www.Python.org>). The continuous variables were expressed as means and standard deviation (SD) or as median and interquartile range (IQR). The differences in the continuous variables were compared using the independent sample t-test and

rank-sum (Mann-Whitney) test. The categorical variables were shown as frequency and were compared using Pearson's chi-squared test or Fisher's exact test. A probability value of  $P < 0.05$  was deemed to indicate statistical significance.

To evaluate the inter-reader agreement of the radiological data between the two abdominal radiologists, either intraclass correlation coefficient (ICC) analysis (for numerical data) or the Kappa test (for categorical data) was performed. The agreement was classified as poor (ICC or Kappa value, 0–0.40), fair to good (ICC or Kappa value, 0.40–0.75), or excellent (ICC or Kappa value,  $>0.75$ ).

## **Results**

### *Patient characteristics*

A total of 227 patients (204 males and 23 females, with a mean age of  $56.4 \pm 12.0$  years) were included. Following a random split, 158 patients (70%) were assigned to a training cohort and the remaining 69 patients (30%) were assigned to a validation cohort. Among 227 patients, 131 patients (57.7%) in BCLC-0 to A and 96 patients (42.3%) in BCLC-B. The detailed demographic, radiological and laboratory characteristics are summarized in Table 1.

The inter-reader agreements of the radiological findings between the two radiologists were all excellent, with Kappa values of 0.949 (tumor distribution), 0.957 (number of tumors), 0.974 (vascularity of the largest tumor), and 0.931 (tumor enhancement pattern) and ICC values of 0.838 (diameter of the largest tumor).

### *TACE refractoriness*

The patterns of early TACE refractoriness in patients with HCC are illustrated in Table 2. Totally, there were 81 patients with early TACE refractoriness (81/227, 35.7%) in the entire study population. Among 81 patients, 53 patients were in the training set (53/158, 33.5%) and 28 patients in the validation set (28/69, 40.6%).

### *Predictive variables*

The detailed demographic, radiological and laboratory characteristics of the patients in the training and validation cohort are summarized in Table 3. In the training cohort, patients with or without early TACE refractoriness showed no difference in baseline characteristics except BCLC stage ( $P=0.043$ ), AFP level ( $P=0.005$ ), up-to-seven criteria ( $P<0.001$ ), tumor distribution ( $P<0.001$ ), number of tumors ( $P=0.001$ ) the size of the largest tumor ( $P=0.035$ ) and tumor enhancement pattern ( $P=0.005$ ). In validation cohort, there were 4 variables with difference between patients with or without early TACE refractoriness, including BCLC stage ( $P<0.001$ ), number of tumors ( $P<0.001$ ), tumor distribution ( $P<0.001$ ) and tumor enhancement pattern ( $P=0.022$ ).

On the basis of important scores generated by RF algorithm, NLR (score=0.178), PLT (score=0.175), patients' age (score=0.157), tumor distribution (score=0.081) and number of tumors (score=0.065) were selected as prognostic factors for predicting early TACE refractoriness in the training cohort (Figure 2). The VIF values of those variables were less than 5, therefore, the five variables showed no multicollinearity and were included in the final predictive model (Figure 3).

### *Performance of the predictive RF models*

Table 4 demonstrates a good discrimination of the proposed RF model for predicting early TACE refractoriness. The AUCs for the RF model in training cohort and validation cohort were 0.863 (95%CI, 0.800-0.913) and 0.767 (95%CI, 0.650-0.861), respectively. According to the confusion matrix, the RF model had a sensitivity of 75.5% and specificity of 81.0% in the training cohort, and a sensitivity of 67.9% and specificity of 87.8% in the validation cohort. The ROC curve of predicting early TACE refractoriness is shown in Figure 4. Moreover, satisfactory calibration was confirmed by the Hosmer-Lemeshow test, with P values of 0.538 and 0.068 in the training and validation cohort, respectively.

### **Discussion**

In the present study, the RF model has achieved a good performance in predicting early TACE refractoriness of HCC patients, with an AUCs of 0.863 and 0.767 in the training cohort and validation cohort, respectively. As suggested by the JSH and LCSGJ, patients with TACE refractoriness should switch to systemic therapy as soon as possible because repeat TACE is no longer effective, and systemic therapy may improve the patients' survival [6, 7]. Therefore, a precise prediction of early TACE refractoriness is crucial. The results of the present study may be clinically significant because it provides a predictive model that differentiating patients who will occur early TACE refractoriness, permitting timely adjustment to the treatment planning.

In previous studies, several predictive models were established by traditional statistical methods such as the logistic regression (LR) model and Cox proportional hazards model [25, 26]. The process of traditional model establishment is selecting the appropriate predictors, utilizing them

for statistical analysis and ultimately deriving a multivariate predictive model. However, predictive models developed by traditional statistical methods are not reliable because the factors included in the models are too simple and utilize a low evidence level [27]. With the development of ML algorithm, more and more ML algorithm-based predictive models have been created [28]. Peng J et al [29] have established a convolutional neural network model and Abajian A et al [14] have created an RF model. To the best of our knowledge, this is the first study in the literature that using RF algorithm to predict early TACE refractoriness of HCC patients. The RF algorithm is a ML algorithm with multiple special decision trees (DTs) [10]. Each DT typically comprises a root node, parent node and leaf node/terminal node. The training samples and input variables of each tree are randomly extracted from the training data sets with the bootstrap sampling method. Each tree gives a classified outcome, and the final result of the RF indicates the class based on the majority of votes from all the DTs. In order to achieve a good performance of RF model, the following procedures were performed in the present study. In the first step, the RF algorithm was used to select potential variables. Because the study population of the present study is relatively small, the number of variables included in the model should be limited to ensure the reliability. In the second step, RF algorithm was used to develop the model because RF algorithm has ability to explore and handle the potential nonlinear relationship between variable and results and prevent the overfitting of the model. In the last step, the combination of RF and five-fold cross validation method was used to prevent the mismatch between forecast value and the actual value, because the robust of the RF is estimated by cross validation.

In the present study, there were 5 predictors in the RF model, including patients' age, number of tumors, tumor distribution, PLT, and NLR.

The number of tumors has been regarded as a predictive factor which is correlated with the treatment response after TACE, and the present study confirmed this finding. Because multiple tumors are usually associated with a more aggressive biological behavior of the tumor, therefore, it may have a higher probability incomplete embolization [30, 31]. Regarding tumor distribution, the present study showed that bilobar tumor distribution was a risk factor of early TACE refractoriness. Usually, bilobar tumor involvement is regarded as the intrahepatic metastasis of the primary lesion, it represents more aggressive nature of the tumor [32], which may result in an insufficient disease control. Additionally, the present study demonstrated that PLT and NLR were predictors of early refractoriness. Several inflammatory indices, such as PLT and NLR, have been investigated to predict the long-term prognosis of HCC patients [33, 34]. However, regarding the early TACE refractoriness, their predictive potential has not been demonstrated yet, and the present study preliminary revealed that PLT and NLR were predictive factors of early TACE refractoriness.

The present study has several limitations. **First, the sample size was relatively small which may lead to a statistical error.** Therefore, the RF model could not be fully trained. A large sample size study should be conducted to improve the predictive performance. Second, this is a retrospective study, which may lead to selection bias. **Third, the present study lacks an independent external validation cohort.** Although the study population was from three independent hospital, an independent external study should be performed to confirm the reproducibility of RF model in the future.

In conclusion, the present RF model has a good predictive performance in patients with early TACE refractoriness. Once established, such a RF predictive model can easily be used in clinical practice and help determine the optimal patient care strategies.

## References

1. Forner A, Reig M, Bruix J. Hepatocellular carcinoma. *Lancet* 2018; 391: 1301-1314.
2. Long J, Wang H, Zhao P, Sheng SP, Shi QS, Long M, et al. Transarterial chemoembolization combined with radiofrequency ablation for solitary large hepatocellular carcinoma ranging from 5 to 7 cm: an 8-year prospective study. *Abdom Radiol (NY)* 2020; 45: 2736-2747.
3. Eilard MS, Andersson M, Naredi P, Geronymakis C, Lindner P, Cahlin C, et al. A prospective clinical trial on sorafenib treatment of hepatocellular carcinoma before liver transplantation. *BMC Cancer* 2019; 19: 568.
4. Maesaka K, Sakamori R, Yamada R, Tahata Y, Urabe A, Shigekawa M, et al. Hypovascular hepatic nodules as a predictive factor for transcatheter arterial chemoembolization refractoriness in hepatocellular carcinoma. *Hepatol Res* 2020; 50: 365-373.
5. Maas M, Beets-Tan R, Gaubert JY, Munoz FG, Habert P, Klompenhouwer LG, et al. Follow-up after radiological intervention in oncology: ECIO-ESOI evidence and consensus-based recommendations for clinical practice. *Insights Imaging* 2020; 11: 83.
6. Kudo M, Matsui O, Izumi N, Iijima H, Kadoya M, Imai Y, et al. JSH Consensus-Based Clinical Practice Guidelines for the Management of Hepatocellular Carcinoma: 2014 Update by the Liver Cancer Study Group of Japan. *Liver Cancer* 2014; 3: 458-468.



7. Kudo M, Han KH, Ye SL, Zhou J, Huang YH, Lin SM, et al. A Changing Paradigm for the Treatment of Intermediate-Stage Hepatocellular Carcinoma: Asia-Pacific Primary Liver Cancer Expert Consensus Statements. *Liver Cancer* 2020; 9: 245-260.
8. Hu K, Lu S, Li M, Zhang F, Tang B, Yuan J, et al. A Novel Pre-treatment Model Predicting Risk of Developing Refractoriness to Transarterial Chemoembolization in Unresectable Hepatocellular Carcinoma. *J Cancer* 2020; 11: 4589-4596.
9. Mishra G, Dev A, Paul E, Cheung W, Koukounaras J, Jhamb A, et al. Prognostic role of alpha-fetoprotein in patients with hepatocellular carcinoma treated with repeat transarterial chemoembolisation. *BMC Cancer* 2020; 20: 483.
10. Breiman L. Random forests. *Mach Learn* 2001; 45: 5-32.
11. Kim S, Shin J, Kim DY, Choi GH, Kim MJ, Choi JY. Radiomics on Gadoteric Acid-Enhanced Magnetic Resonance Imaging for Prediction of Postoperative Early and Late Recurrence of Single Hepatocellular Carcinoma. *Clin Cancer Res* 2019; 25: 3847-3855.
12. Liao HT, Xiong TY, Peng JJ, Xu L, Liao MH, Zhang Z, et al. Classification and Prognosis Prediction from Histopathological Images of Hepatocellular Carcinoma by a Fully Automated Pipeline Based on Machine Learning. *Ann Surg Oncol* 2020; 27: 2359-2369.
13. Choi GH, Han S, Shim JH, Ryu MH, Ryoo BY, Kang YK, et al. Prognostic Scoring Models for Patients Undergoing Sorafenib Treatment for Advanced Stage Hepatocellular Carcinoma in Real-Life Practice. *Am J Clin Oncol* 2017; 40: 167-174.

14. Abajian A, Murali N, Savic LJ, Laage-Gaupp FM, Nezami N, Duncan JS, et al. Predicting Treatment Response to Intra-arterial Therapies for Hepatocellular Carcinoma with the Use of Supervised Machine Learning-An Artificial Intelligence Concept. *J Vasc Interv Radiol* 2018; 29: 850-857.
15. Morshid A, Elsayes KM, Khalaf AM, Elmohr MM, Yu J, Kaseb AO, et al. A machine learning model to predict hepatocellular carcinoma response to transcatheter arterial chemoembolization. *Radiol Artif Intell* 2019; 1: e180021.
16. Gaba RC, Lewandowski RJ, Hickey R, Baerlocher MO, Cohen EI, Dariushnia SR, et al. Transcatheter Therapy for Hepatic Malignancy: Standardization of Terminology and Reporting Criteria. *J Vasc Interv Radiol* 2016; 27: 457-473.
17. Llovet JM, Lencioni R. mRECIST for HCC: Performance and novel refinements. *J Hepatol* 2020; 72: 288-306.
18. Cheng S, Chen M, Cai J, et al. Chinese Expert Consensus on Multidisciplinary Diagnosis and Treatment of Hepatocellular Carcinoma with Portal Vein Tumor Thrombus (2018 Edition). *Liver Cancer* 2020; 9(1): 28-40.
19. Reig M, Galle PR, Kudo M, et al. Pattern of progression in advanced hepatocellular carcinoma treated with ramucirumab. *Liver Int* 2021; 41(3): 598-607.
20. Luedemann WM, Geisel D, Gebauer B, Schnapauff D, Chapiro J, Wieners G, et al. Comparing HCC arterial tumour vascularisation on baseline imaging and after lipiodol cTACE: how do estimations of enhancing tumour volumes differ on contrast-enhanced MR and CT? *Eur Radiol* 2020; 30: 1601-1608.

21. Shimizu R, Tamai H, Mori Y, Shingaki N, Maeshima S, Nuta J, et al. The arterial tumor enhancement pattern on contrast-enhanced computed tomography is associated with primary cancer death after radiofrequency ablation for small hepatocellular carcinoma. *Hepatol Int* 2016; 10: 328-339.
22. Huber W, von Heydebreck A, Sültmann H, Poustka A, Vingron M. Variance stabilization applied to microarray data calibration and to the quantification of differential expression. *Bioinformatics* 2002; 18: S96-S104.
23. Steyerberg EW. *Clinical Prediction Models*. New York: Springer; 2008:197-199.
24. Wolff RF, Moons KGM, Riley RD, Whiting PF, Westwood M, Collins GS, et al. PROBAST: A Tool to Assess the Risk of Bias and Applicability of Prediction Model Studies. *Ann Intern Med* 2019; 170: 51-58.
25. Yoo J, Lee MW, Lee DH, Lee JH, Han JK. Evaluation of a serum tumour marker-based recurrence prediction model after radiofrequency ablation for hepatocellular carcinoma. *Liver Int* 2020; 40: 1189-1200.
26. Labeur TA, Berhane S, Edeline J, Blanc JF, Bettinger D, Meyer T, et al. Improved survival prediction and comparison of prognostic models for patients with hepatocellular carcinoma treated with sorafenib. *Liver Int* 2020; 40: 215-228.
27. WH, Lee KT, Chen HY, Ho TW, Chiu HC. Disease-free survival after hepatic resection in hepatocellular carcinoma patients: a prediction approach using artificial neural network. *PLoS One* 2012; 7(1): e29179.

28. Zou ZM, Chang DH, Liu H, Xiao YD. Current updates in machine learning in the prediction of therapeutic outcome of hepatocellular carcinoma: what should we know? *Insights Imaging* 2021; 12: 31.
29. Peng J, Kang S, Ning Z, Deng HX, Shen JX, Xu YK, et al. Residual convolutional neural network for predicting response of transarterial chemoembolization in hepatocellular carcinoma from CT imaging. *Eur Radiol* 2020; 30: 413-424.
30. Kim SS, Nam JS, Cho HJ, Won JH, Kim JW, Ji JH, et al. Plasma microRNA-122 as a predictive marker for treatment response following transarterial chemoembolization in patients with hepatocellular carcinoma. *J Gastroenterol Hepatol* 2017; 32(1): 199-207.
31. Wang TC, An TZ, Li JX, Zhang ZS, Xiao YD. Development and Validation of a Predictive Model for Early Refractoriness of Transarterial Chemoembolization in Patients With Hepatocellular Carcinoma. *Front Mol Biosci* 2021; 8: 633590.
32. Elmoghazy W, Ahmed K, Vijay A, Kamel Y, Elaffandi A, El-Ansari W, et al. Hepatocellular carcinoma in a rapidly growing community: Epidemiology, clinico-pathology and predictors of extrahepatic metastasis. *Arab J Gastroenterol* 2019; 20:38-43.
33. Schobert IT, Savic LJ, Chapiro J, Bousabarah K, Chen E, Laage-Gaupp F, et al. Neutrophil-to-lymphocyte and platelet-to-lymphocyte ratios as predictors of tumor response in hepatocellular carcinoma after DEB-TACE. *Eur Radiol* 2020; 30: 5663-5673.
34. Cruz JC, Watchmaker JM, Albin MM, Wang L, Wu G, Baker JC, et al. Neutrophil/Lymphocyte Ratio Predicts Increased Risk of Immediate Progressive Disease following Chemoembolization of Hepatocellular Carcinoma. *J Vasc Interv Radiol* 2019; 30: 1887-1892.

Table 1. The baseline demographic, radiological and laboratorial characteristics

Characteristics	Overall (n= 227)	Training cohort (n=158)	Validation cohort (n=69)	P
Age (years)	56.4±12.0	56.5±12.4	56.1±11.1	0.820
Gender (%)				0.056
male	204 (89.9)	138 (87.3)	66 (95.7)	
female	23 (10.1)	20 (12.7)	3 (4.3)	
Underlying liver disease (%)				0.483
None	29 (12.8)	20 (12.7)	9 (13.0)	
HBV	182 (80.2)	129 (81.6)	53 (76.8)	
Others	16 (7.0)	9 (5.7)	7 (10.1)	
Child-Pugh class (%)				0.012

A	197 (86.8)	143 (90.5)	54 (78.3)	
B	30 (13.2)	15 (9.5)	15 (21.7)	
BCLC stage (%)				0.265
0 -A	131 (57.7)	95 (60.1)	36 (52.2)	
B	96 (42.3)	63 (39.9)	33 (47.8)	
AFP level (%)				0.267
<400 ng/mL	139 (61.2)	93 (58.9)	46 (66.7)	
≥400 ng/mL	88 (38.8)	65 (41.1)	23 (33.3)	
NEUT ( $\times 10^9/L$ , IQR)	3.01 (2.44)	3.00 (2.72)	3.01 (2.01)	0.801
LY ( $\times 10^9/L$ , IQR)	1.04(0.84)	1.02 (0.85)	1.09 (0.76)	0.415
NLR (IQR)	2.93 (3.55)	3.01 (3.66)	2.70 (3.14)	0.267
PLT ( $\times 10^9/L$ , IQR)	141 (113)	145 (113)	128 (109)	0.150
ALB (%)				0.485

<35 g/L	62 (27.3)	41 (25.9)	21 (30.4)	
≥ 35 g/L	165 (72.7)	117 (74.1)	48 (69.6)	
TBIL (%)				0.562
<34.2 umol/L	212 (93.4)	146 (92.4)	66 (95.7)	
≥ 34.2 umol/L	15 (6.6)	12 (7.6)	3 (4.3)	
Up-to-seven criteria (%)				0.199
within	90 (39.6)	67 (42.4)	23 (33.3)	
beyond	137 (60.4)	91 (57.6)	46 (66.7)	
Tumor distribution (%)				0.533
unilobar	145 (63.9)	103 (65.2)	42 (60.9)	
bilobar	82 (36.1)	55 (34.8)	27 (39.1)	
Number of tumors (%)				0.120
solitary	128 (56.4)	95 (60.1)	33 (47.8)	

2-3	59 (26.0)	35 (22.2)	24 (34.8)	
>3	40 (17.6)	28 (17.7)	12 (17.4)	
Size of the largest tumor (%)				0.759
<50 mm	88 (38.8)	63 (39.9)	25 (36.2)	
50-100 mm	84 (37.0)	56 (35.4)	28 (40.6)	
>100 mm	55 (24.2)	39 (24.7)	16 (23.2)	
Vascularity of the largest tumor (%)				0.636
hyper-vascularity	204 (89.9)	141 (89.2)	63 (91.3)	
hypo-vascularity	23 (10.1)	17 (10.8)	6 (8.7)	
Tumor enhancement pattern (%)				0.423
homogeneous	30 (13.2)	19 (12.0)	11 (15.9)	
heterogenous	197 (86.8)	139 (88.0)	58 (84.1)	
TACE refractoriness (%)				0.309



presence	81 (35.7)	53 (33.5)	28 (40.6)
absence	146 (64.3)	105 (66.5)	41 (59.4)

---

Abbreviations: HBV, hepatitis B virus; BCLC, Barcelona-Clinic-Liver-Cancer; AFP, alpha-fetoprotein; NEUT, neutrophil count; IQR, interquartile range; LY, lymphocyte count; NLR, NEUT to LY ratio; PLT, platelet count; ALB, albumin; TBIL, total bilirubin; TACE, transarterial chemoembolization

Table 2. The patterns of early TACE refractoriness in patients with HCC

Characteristics	Total (n=81)	Training set (n=53)	Validation set (n=28)	P value
Viable lesions > 50%, n (%)	51 (63.0)	32 (60.4)	19 (67.9)	0.507
Presence of new lesions, n (%)	11 (13.6)	7 (13.2)	4 (14.3)	1.000
Elevation of AFP, n (%)	35 (43.2)	22 (41.5)	13 (46.4)	0.723
Vascular invasion, n (%)	9 (11.1)	7 (13.2)	2 (7.1)	0.483
Extrahepatic spread, n (%)	5 (6.2)	5 (9.4)	0	-

Abbreviations: TACE, transarterial chemoembolization; HCC, hepatocellular carcinoma; AFP, alpha-fetoprotein

Table 3. The baseline characteristics of patients in training set (n=158) and validation set (n=69)

Characteristics	Training set (n=158)			Validation set (n=69)		
	TACE refractoriness	TACE non-refractoriness	P	TACE refractoriness	TACE non-refractoriness	P
	(n=53)	(n=105)		(n=28)	(n=41)	
Age (years)	55.9±12.4	56.8±12.4	0.684	55.9±12.6	56.3±10.1	0.874
Gender (%)			0.883			0.562
male	46 (86.8)	92 (87.6)		26 (92.9)	40 (97.6)	
female	7 (13.2)	13 (12.4)		2 (7.1)	1 (2.4)	
Underlying liver disease (%)			0.160			0.438
None	10 (18.9)	10 (9.5)		2 (7.1)	7 (17.1)	
HBV	39 (73.6)	90 (85.7)		24 (85.7)	29 (70.7)	
Others	4 (7.5)	5 (4.8)		2 (7.1)	5 (12.2)	
Child-Pugh class (%)			0.243			0.256

A	50 (94.3)	93 (88.6)		20 (71.4)	34 (82.9)	
B	3 (5.7)	12 (11.4)		8 (28.6)	7 (17.1)	
BCLC stage (%)			0.043			<0.001
0-A	26 (49.1)	69 (65.7)		6 (21.4)	30 (73.2)	
B	27 (50.9)	36 (34.3)		22 (78.6)	11 (26.8)	
AFP level (%)			0.005			0.729
<400 ng/mL	23 (43.4)	70 (66.7)		18 (64.3)	28 (68.3)	
≥400 ng/mL	30 (56.6)	35 (33.3)		10 (35.7)	13 (31.7)	
NLR (IQR)	3.26 (4.28)	3.00 (3.46)	0.518	3.00 (3.17)	2.41 (2.73)	0.095
PLT (×10 <sup>9</sup> /L, IQR)	167 (99)	138 (114)	0.053	132 (101)	128 (107)	0.793
ALB (%)			0.772			0.799
<35 g/L	13 (24.5)	28 (26.7)		9 (32.1)	12 (29.3)	
≥35 g/L	40 (75.5)	77 (73.3)		19 (67.9)	29 (70.7)	

TBIL (%)			0.219		1.000
<34.2 umol/L	47 (88.7)	99 (94.3)		27 (96.4)	39 (95.1)
≥34.2 umol/L	6 (11.3)	6 (5.7)		1 (3.6)	2 (4.9)
Up-to-seven criteria (%)			<0.001		0.083
within	12 (22.6)	55 (52.4)		6 (21.4)	17 (41.5)
beyond	41 (77.4)	50 (47.6)		22 (78.6)	24 (58.5)
Tumor distribution (%)			<0.001		<0.001
unilobar	22 (41.5)	81 (77.1)		9 (32.1)	33 (80.5)
bilobar	31 (58.5)	24 (22.9)		19 (67.9)	8 (19.5)
Number of tumors (%)			0.001		<0.001
solitary	26 (49.1)	69 (65.7)		6 (21.4)	27 (65.9)
2-3	9 (17.0)	26 (24.8)		13 (46.4)	11 (26.8)
>3	18 (34.0)	10 (9.5)		9 (32.1)	3 (7.3)

Size of the largest tumor (%)			0.035		0.395
<50 mm	15 (28.3)	48 (45.7)		8 (28.6)	17 (45.5)
50-100 mm	19 (35.8)	37 (35.2)		14 (50.0)	14 (34.1)
>100 mm	19 (35.8)	20 (19.0)		6 (21.4)	10 (24.4)
Vascularity of the largest tumor (%)			0.702		-
hyper-vascularity	48 (90.6)	93 (88.6)		28 (100)	35 (85.4)
hypo-vascularity	5 (9.4)	12 (11.4)		0	6 (14.6)
Tumor enhancement pattern (%)			0.005		0.022
homogeneous	1 (1.9)	18 (17.1)		1 (3.6)	10 (24.4)
heterogenous	52 (98.1)	87 (82.9)		27 (96.4)	31 (75.6)

Abbreviations: TACE, transarterial chemoembolization; HBV, hepatitis B virus; BCLC, Barcelona Clinic Liver Cancer; AFP, alpha-fetoprotein;

IQR, inter-quartile range; NLR, neutrophil to lymphocyte ratio; PLT, platelet count; ALB, albumin; TBIL, total bilirubin.

Table 4. Performance of the RF model in predicting early TACE refractoriness

	Training cohort	Validation cohort
AUC (95% CI)	0.863 (0.800, 0.913)	0.767 (0.650-0.861)
PPV (%)	66.6	79.2
NPV (%)	86.8	80.0
Sensitivity (%)	75.5	67.9
Specificity (%)	81.0	87.8

Abbreviations: RF, random forest model; TACE, transarterial chemoembolization; AUC, area under curve; CI, confidence interval; PPV, positive predictive value; NPV, negative predictive value

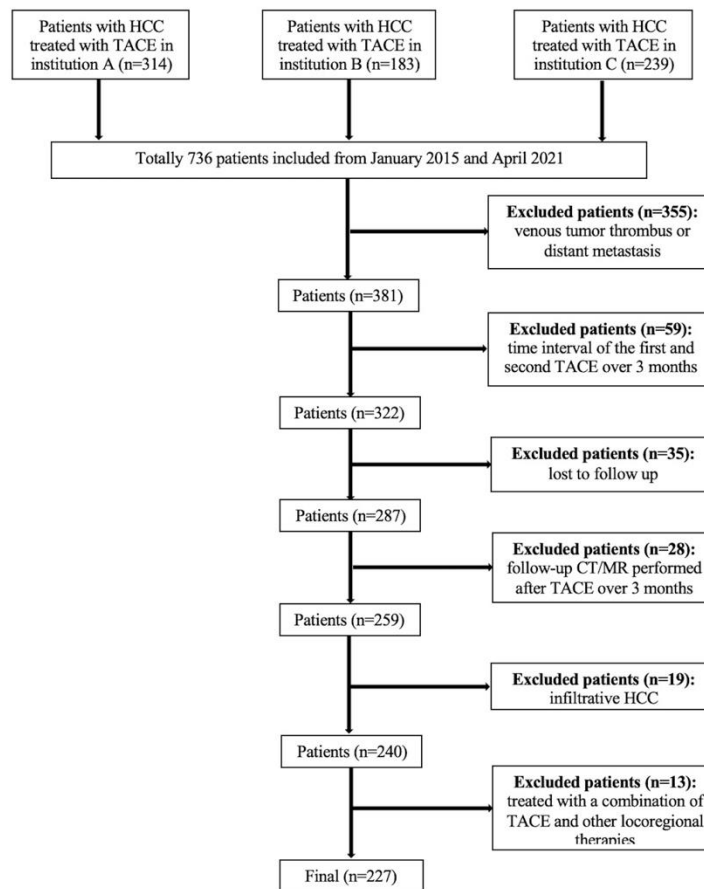


Figure 1. Flowchart of the study population.



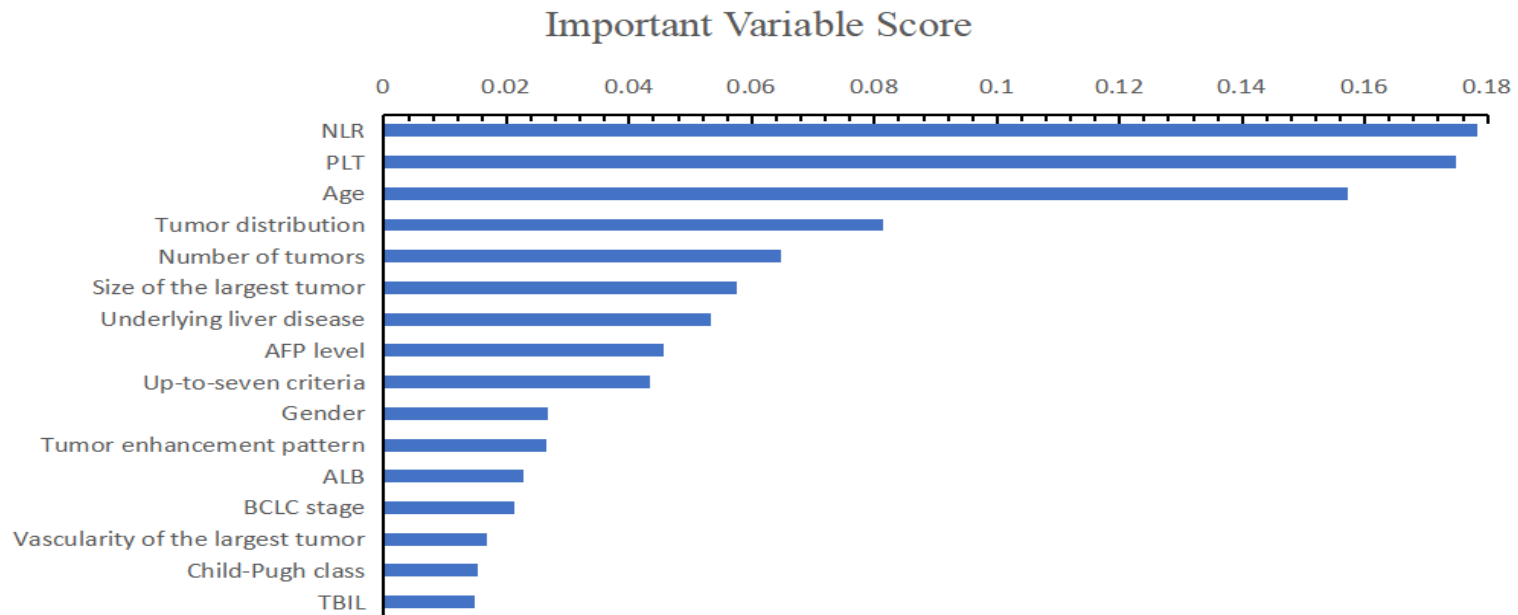


Figure 2. On the basis of important scores of the RF algorithm, NLR (score=0.178), PLT (score=0.175), patients' age (score=0.157), tumor distribution (score=0.081) and number of tumors (score=0.065) were selected as prognostic factors for predicting early TACE refractoriness in the training cohort.

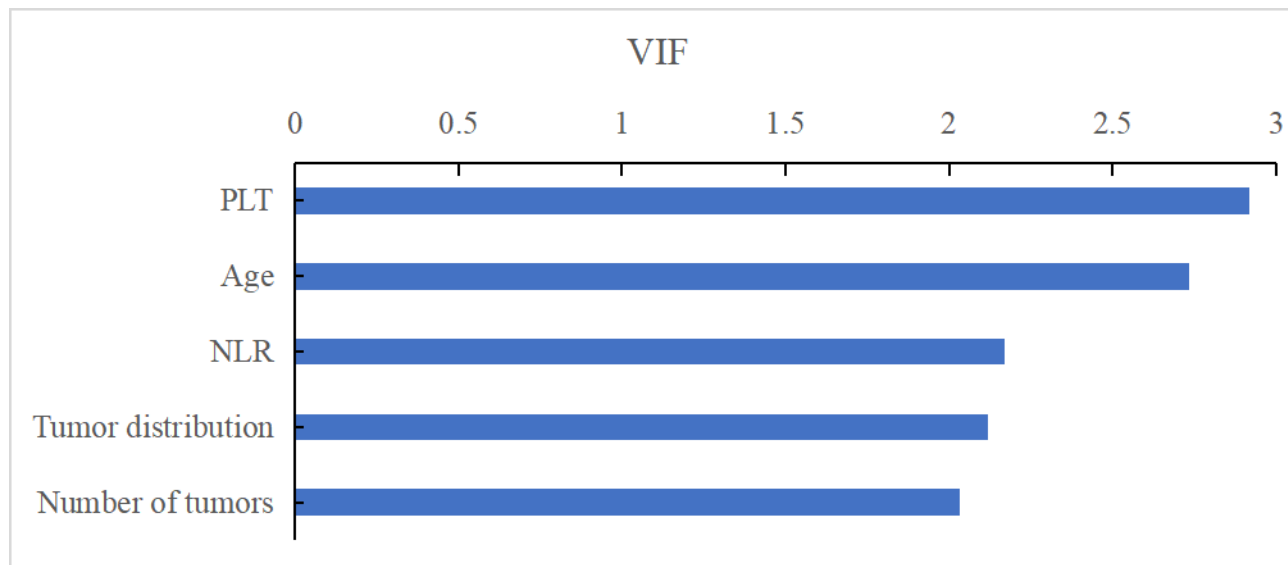
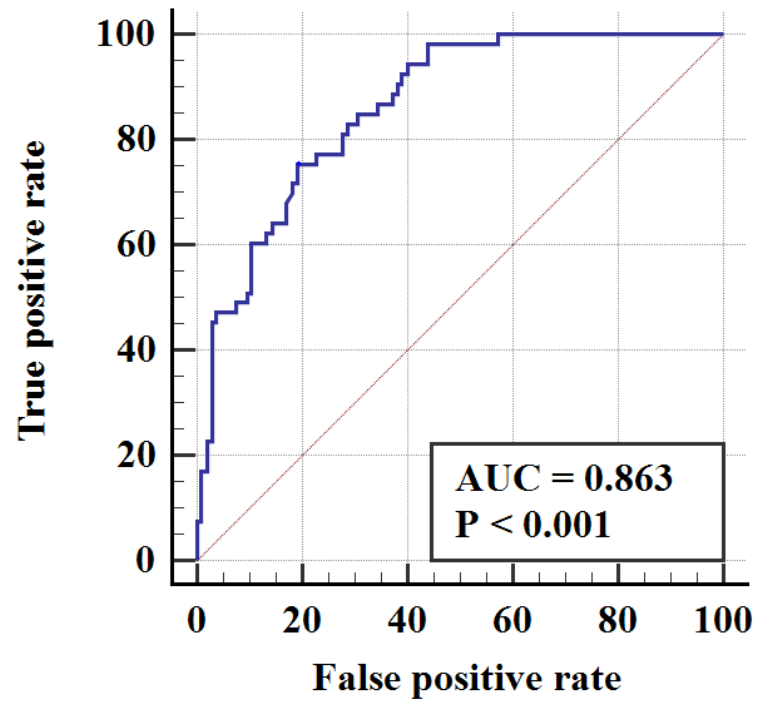


Figure 3. The VIF values of those variables were less than 5, therefore, the five variables showed no multicollinearity and were included in the final predictive model

**A**  
Receiver Operating Characteristic (Training)



**B**  
Receiver Operating Characteristic (Validation)

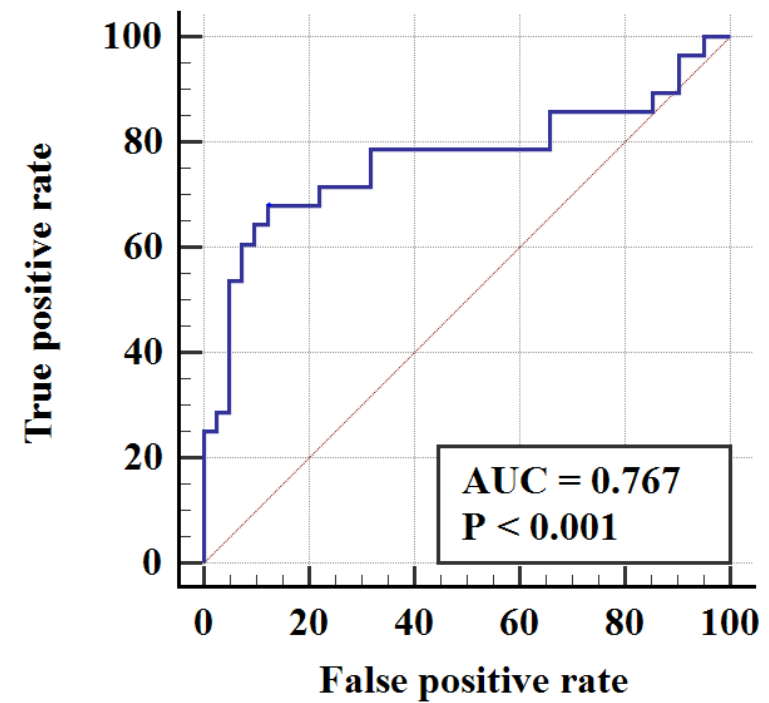


Figure 4. The ROC curve in training cohort and validation cohort. The AUCs in training cohort and validation cohort were 0.863 (95%CI, 0.800-0.913) and 0.767 (95%CI, 0.650-0.861), respectively.