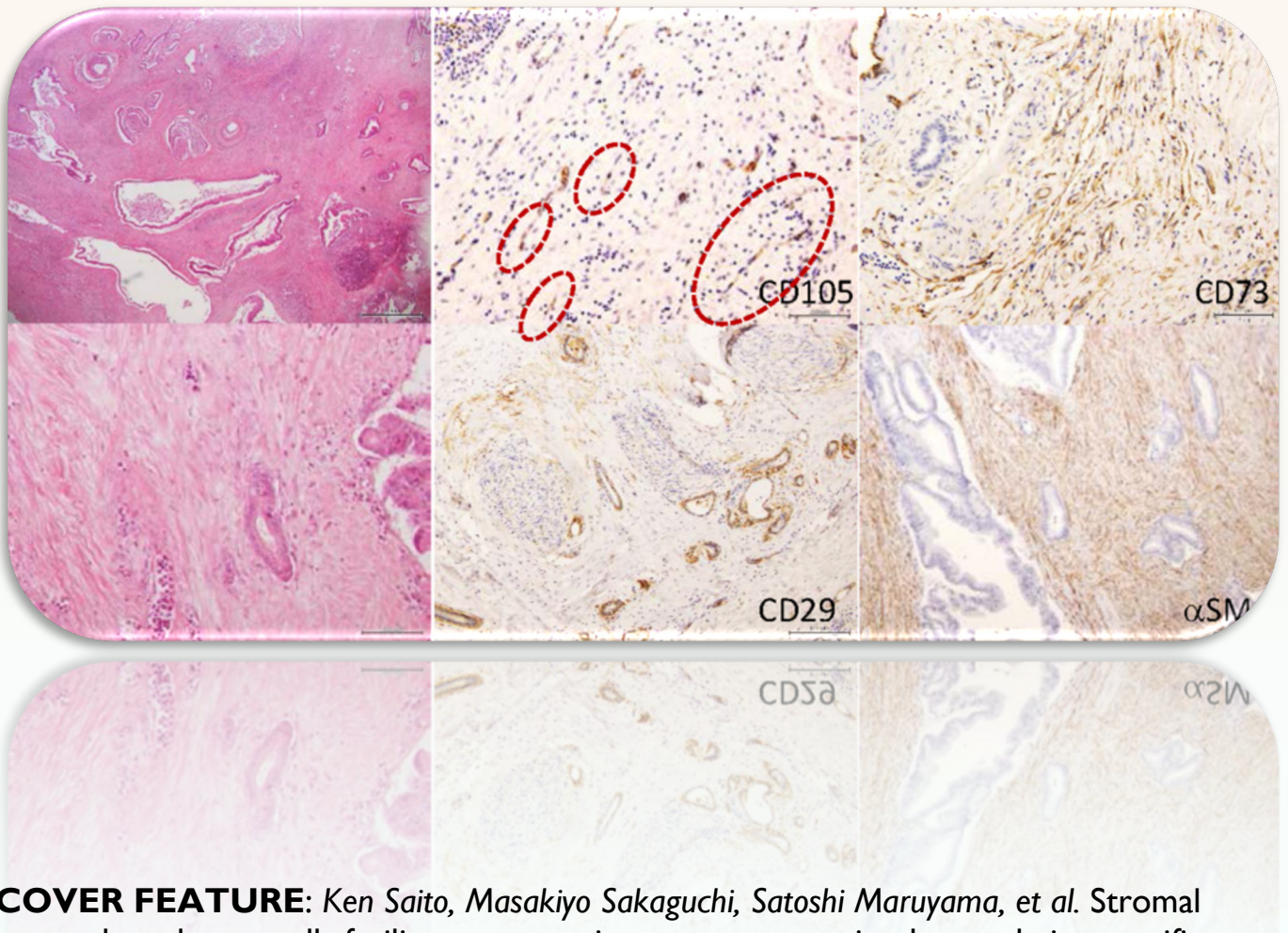


Journal of Cancer



COVER FEATURE: Ken Saito, Masakiyo Sakaguchi, Satoshi Maruyama, et al. Stromal mesenchymal stem cells facilitate pancreatic cancer progression by regulating specific secretory molecules through mutual cellular interaction



ISSN 1837-9664



9 771837 966005



IVYSPRING
INTERNATIONAL PUBLISHER