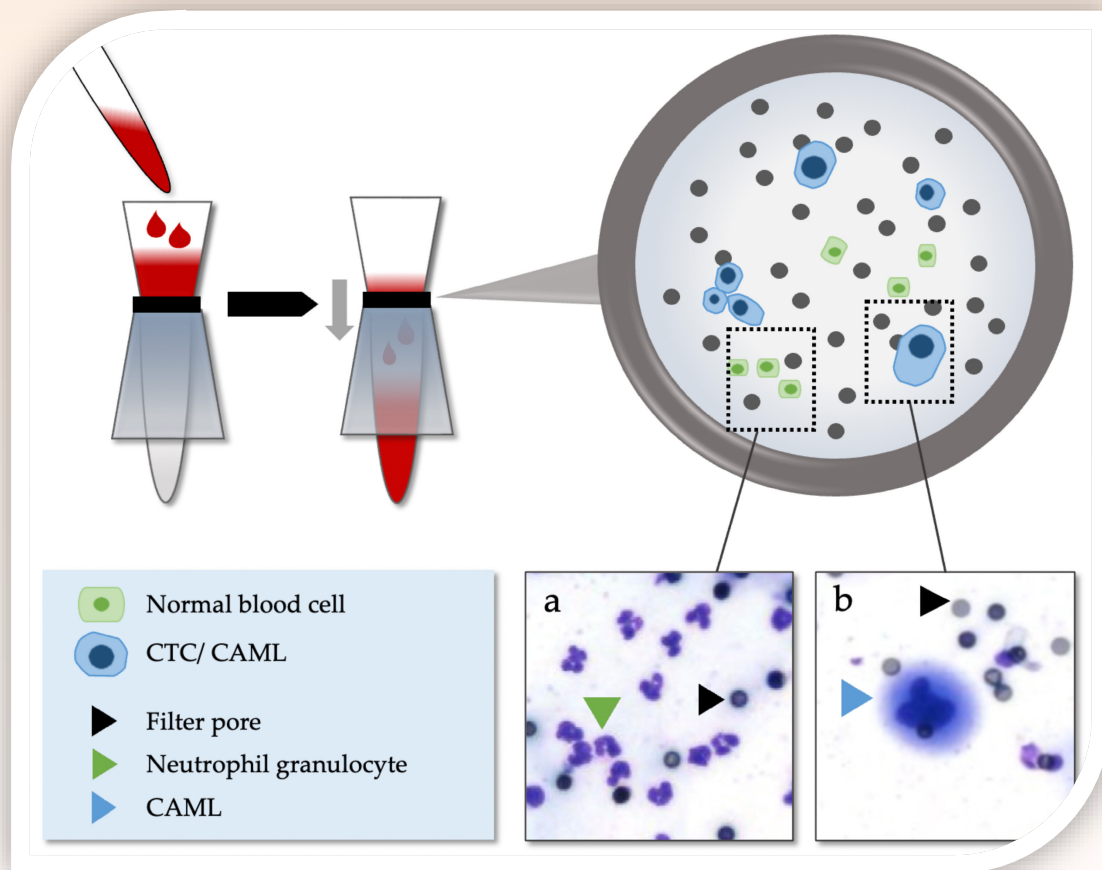


# Journal of Cancer



**COVER FEATURE: Cancer-associated Macrophage-like Cells in Patients with Non-metastatic Adenocarcinoma of the Esophagus - Cytomorphological Heterogeneity**

Clara Braun, Claudia Schmoor, Sylvia Timme-Bronsert, Stefan Fichtner-Feigl, et al.



ISSN 1837-9664



9 771837 966005



**IVYSPRING**  
INTERNATIONAL PUBLISHER