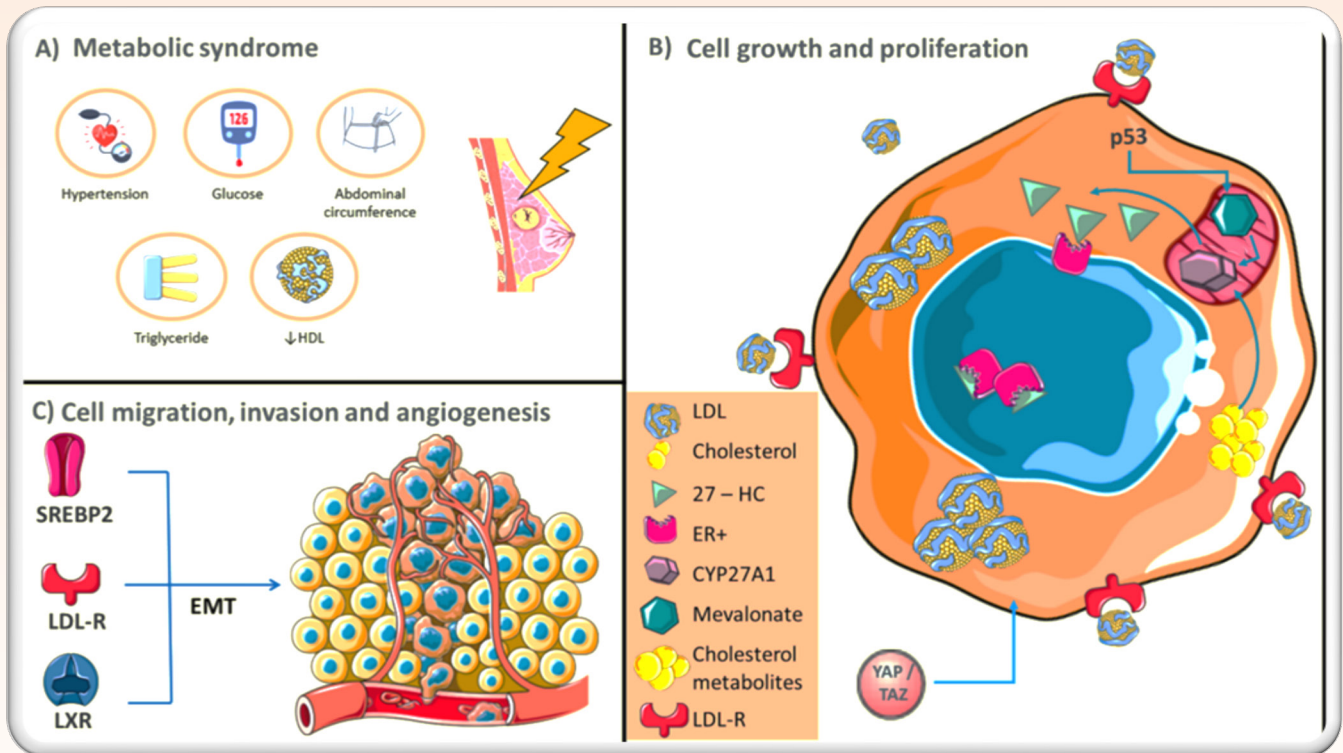


Journal of Cancer



COVER FEATURE: *Alina González-Ortiz, Octavio Galindo-Hernández, Gerson N. Hernández-Acevedo, Gustavo Hurtado-Ureta, Victor García-González.* Impact of cholesterol-pathways on breast cancer development, a metabolic landscape



ISSN 1837-9664



9 771837 966005



IVYSPRING
INTERNATIONAL PUBLISHER