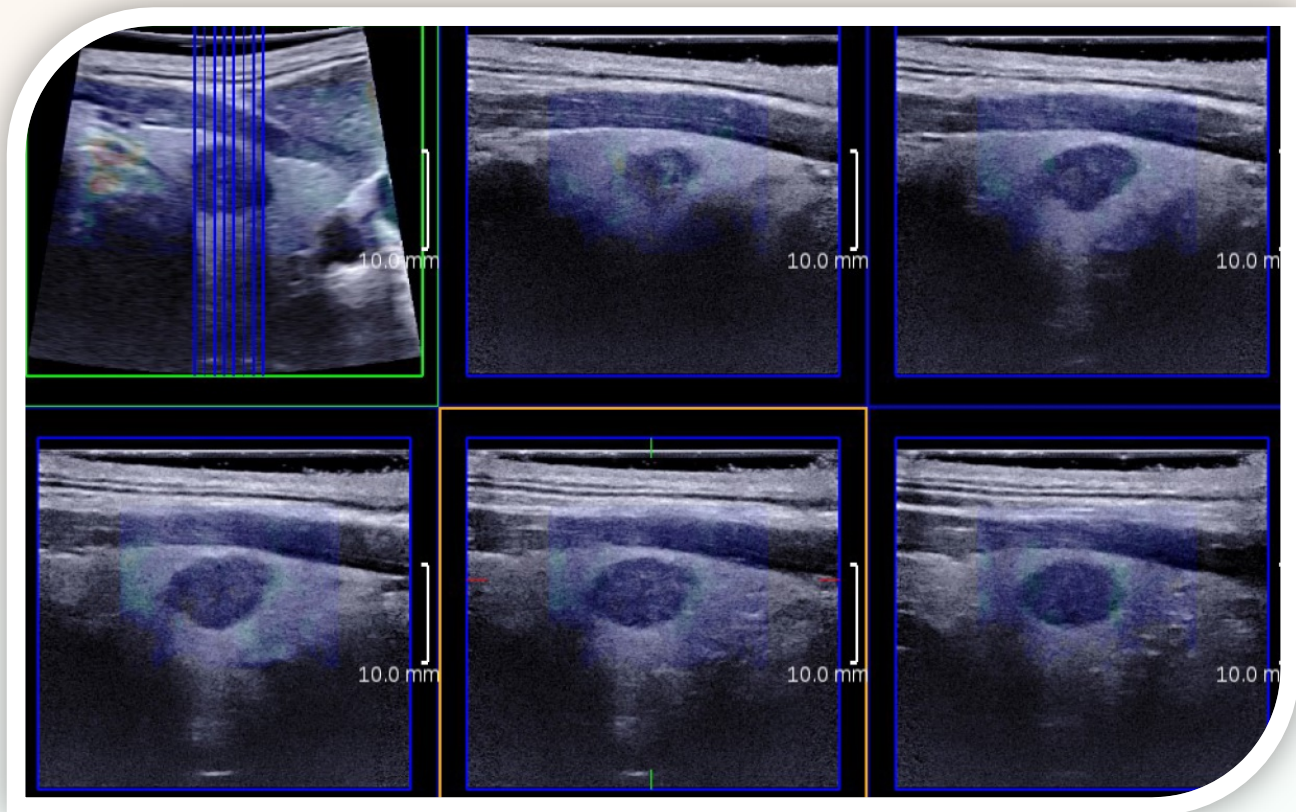


# Journal of Cancer



**COVER FEATURE:** Rui-Jun Han, Jing Du, Feng-Hua Li, Hao-Ru Zong, *et al.*  
Comparisons and Combined Application of Two-Dimensional and Three-Dimensional  
Real-time Shear Wave Elastography in Diagnosis of Thyroid Nodules



ISSN 1837-9664



9 771837 966005



**IVYSPRING**  
INTERNATIONAL PUBLISHER