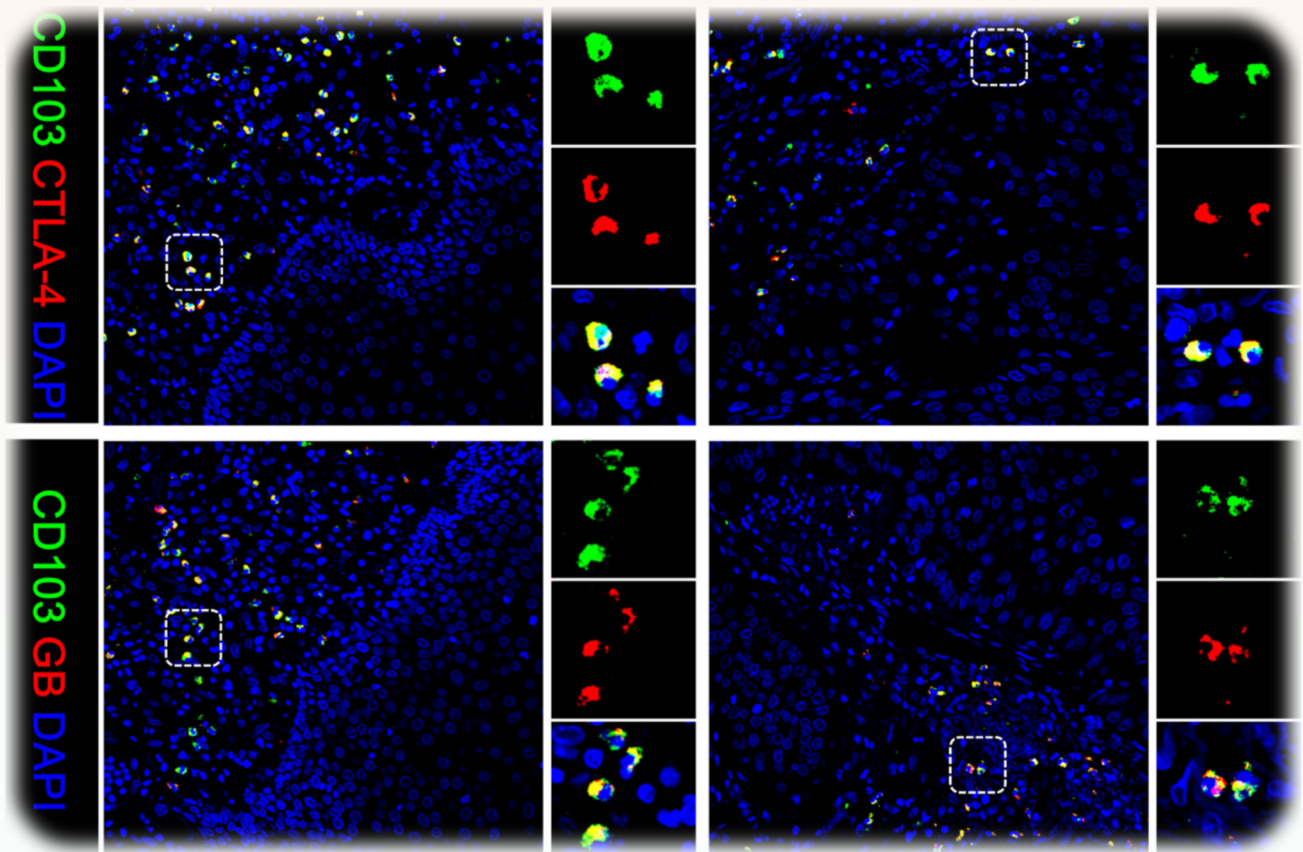


Journal of Cancer



COVER FEATURE: Yifan Chu, Jing Liao, Jinqing Li, Yongchun Wang, et al. *CD103⁺ tumor-infiltrating lymphocytes predict favorable prognosis in patients with esophageal squamous cell carcinoma*



ISSN 1837-9664



9 771837 966005



IVYSPRING
INTERNATIONAL PUBLISHER