

Fig. S1: Knockdown of Kif20a in STS cell lines. (A) Transfection efficiency was determined by fluorescence microscopy, (B) by qRT-PCR (C) and by Western blotting. qRT-PCR and Western blot assays were normalized to GAPDH. * $P < 0.05$, ** $P < 0.01$, *** $P < 0.001$, **** $P < 0.0001$.

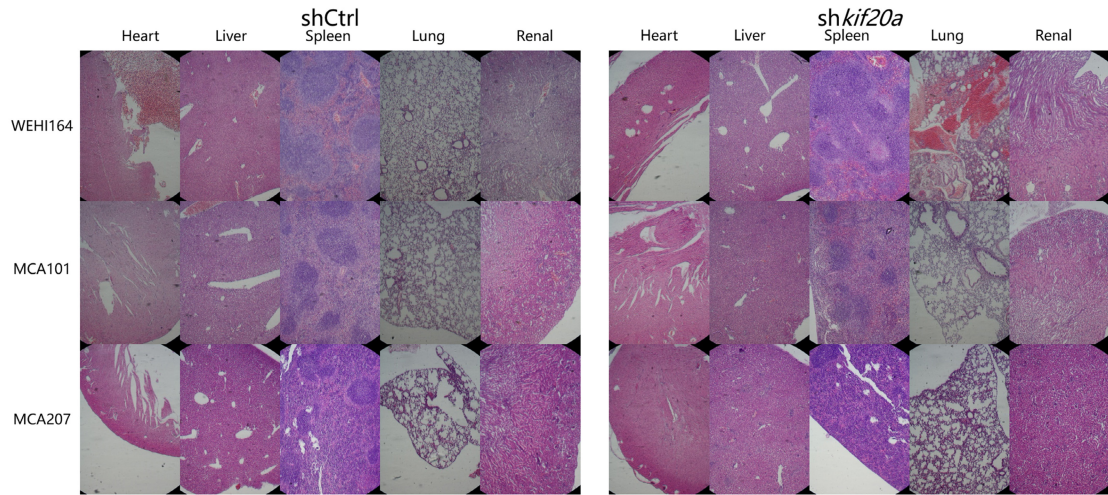


Fig. S2: Tumor metastasis was determined from observation of HE