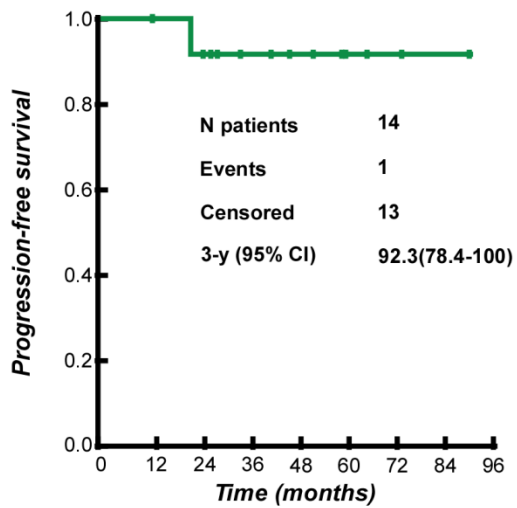
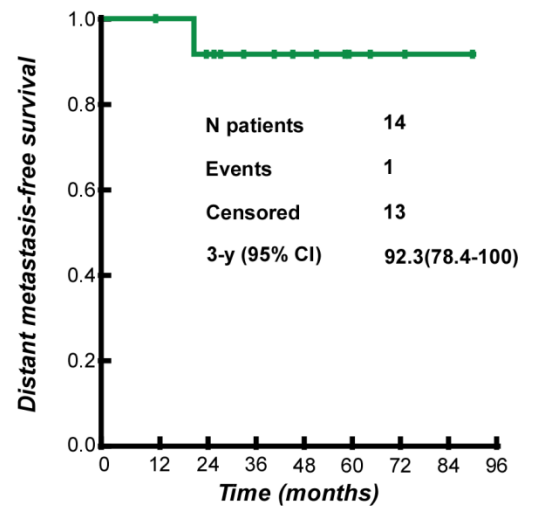


Supplement Figure 1. Kaplan-Meier estimates of the survival of patients who had clinically presumed but pathologically negative neck disease. (A) Progression-free survival; (B) Distant metastasis-free survival.

A**No. at risk:**

14 13 11.5 8 6 3 1.5 1

B**No. at risk:**

14 13 11.5 8 6 3 1.5 1