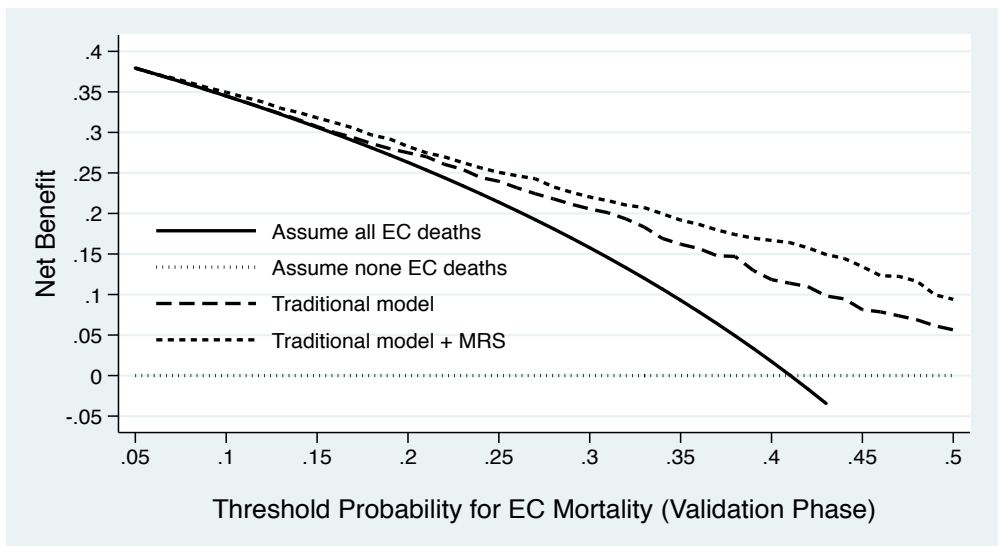
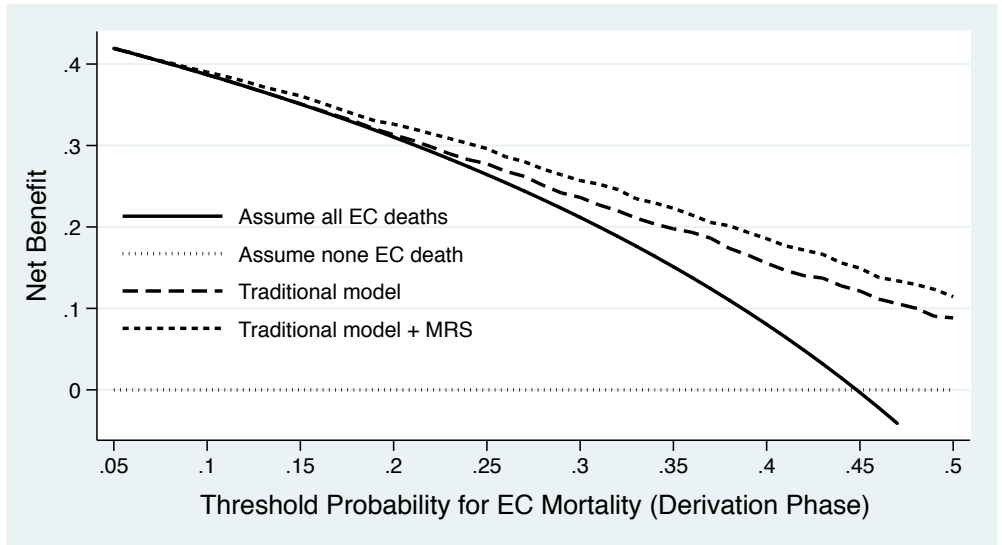


Supplementary Figure 1.



Supplementary Table 1. Determination of scores associated with each of the quintile ranges of metabolic risk factors in derivation group

Metabolic risk factor	Quintile (range)*	Ref. value**	Reg. coef.	Pre-score	Shrunk score†	Score‡
BMI (kg/m ²)	Q1: 17.15-19.72	18.44	0.0126	-0.0437	-0.0441	-1
	Q2: 19.72-21.22	20.47		-0.0181	-0.0183	0
	Q3: 21.22-22.60	21.91		Ref.	Ref.	0
	Q4: 22.60-24.77	23.68		0.0224	0.0226	1
	Q5: 24.77-29.05	26.91		0.0630	0.0636	1
PP (mmHg)	Q1: 25.00-35.00	30.00	0.0048	-0.0720	-0.0726	-2
	Q2: 35.00-40.00	37.50		-0.0360	-0.0363	-1
	Q3: 40.00-50.00	45.00		Ref.	Ref.	0
	Q4: 50.00-55.00	52.50		0.0360	0.0363	1
	Q5: 55.00-80.00	67.50		0.1080	0.1090	2
FBG (mmol/L)	Q1: 3.76-4.51	4.14	0.0760	-0.0832	-0.0840	-2
	Q2: 4.51-4.93	4.72		-0.0388	-0.0391	-1
	Q3: 4.93-5.52	5.23		Ref.	Ref.	0
	Q4: 5.52-7.47	6.50		0.0963	0.0971	2
	Q5: 7.47-13.69	10.58		0.4066	0.4102	9
TG (mmol/L)	Q1: 0.41-0.67	0.54	-0.0304	0.0134	0.0135	0
	Q2: 0.67-0.87	0.77		0.0064	0.0064	0
	Q3: 0.87-1.08	0.98		Ref.	Ref.	0
	Q4: 1.08-1.51	1.30		-0.0096	-0.0097	0
	Q5: 1.51-3.56	2.54		-0.0473	-0.0477	-1
HDLc (mmol/L)	Q1: 0.47-0.78	0.63	-0.3136	0.2180	0.2199	5
	Q2: 0.78-0.96	0.87		0.1411	0.1424	3
	Q3: 0.96-1.18	1.07		0.0784	0.0791	2
	Q4: 1.18-1.45	1.32		Ref.	Ref.	0
	Q5: 1.45-2.04	1.74		-0.1332	-0.1344	-3

Abbreviations: BMI, body mass index; PP, pulse pressure; FBG, fasting blood glucose; TG, triglycerides; HDLC, high-density lipoprotein cholesterol; Ref. value, reference value; Reg. coef., regression coefficient; Ref., reference. *For each metabolic risk factor, to minimize the influence of extreme values, we use the 1st and the 99th percentile to determine the reference limits for the first and last quintiles. **Ref. value: middle point of quintile range. †The shrinkage coefficient is 1.0089. The constant for the score system is based on the increase

in risk of esophageal cancer mortality associated with a 5-year increase in age ($B=0.045$).

‡The score is rounded to the nearest integer.

Supplementary Table 2. The baseline and clinicopathologic characteristics of patients who were lost to follow-up (n=147) or died of causes other than esophageal cancer (n=204) after discharge from the hospital

Characteristics	Drop-outs or deaths of other causes
Sample size	351
Age at surgery (years)	56.47±9.95
Males/females	267/84
Body mass index (kg/m ²)	22.28±3.12
Ever smoking	147 (41.88%)
Ever drinking	67 (19.09%)
Family cancer history (+)	46 (13.11%)
Systolic blood pressure (mmHg)	123.33±17.65
Diastolic blood pressure (mmHg)	77.01±11.00
Fasting glucose (mmol/L)	6.18±2.78
Triglycerides (mmol/L)	1.20±0.79
Total cholesterol (mmol/L)	4.78±1.05
HDL cholesterol (mmol/L)	1.14±0.39
LDL cholesterol (mmol/L)	3.12±0.96
Metabolic syndrome	33 (9.40%)
Esophagus location	
Upper	55 (15.67%)
Middle	252 (71.79%)
Lower	44 (12.54%)
Histological differentiation	
Well	58 (16.52%)

	Moderate	245 (69.80%)
	Poor	48 (13.68%)
Depth of invasion		
	T1-T2	97 (27.64%)
	T3-T4	254 (72.36%)
Regional LNM		
	N0	149 (42.45%)
	N1	96 (27.35%)
	N2	74 (21.08%)
	N3	32 (9.12%)
Tumor embolus (+)		49 (13.96%)
TNM stage		
	I	30 (8.55%)
	II	122 (34.76%)
	III	199 (56.70%)
Tumor size (cm)		4.43±2.16

Abbreviations: HDL, high-density lipoprotein; LDL, low-density lipoprotein; LNM, lymph node metastasis; TNM, tumor node metastasis. Data are expressed as mean ± standard deviation or number (percentage).