

Table S1. Univariate analysis for overall survival of ESCC patients

Variables	N	Mean \pmSD	Median \pmSD	P value
Sex				0.22
Male	67	25.51 \pm 3.78	14.00 \pm 1.99	
Female	17	29.33 \pm 5.60	24.00 \pm 4.27	
Age				0.766
\leq 55	42	26.32 \pm 5.24	14.00 \pm 2.03	
$>$ 55	42	25.50 \pm 3.90	20.00 \pm 3.46	
Tumor Size				0.579
\leq 5.0	44	23.68 \pm 2.97	19.00 \pm 2.33	
$>$ 5.0	40	27.36 \pm 5.66	13.00 \pm 1.28	
Histological Grade				0.528
I	12	19.13 \pm 3.16	21.00 \pm 2.73	
II-III	72	29.27 \pm 4.14	14.00 \pm 1.77	
T stage				0.491
T1-T2	24	29.33 \pm 6.66	19.00 \pm 6.90	
T3-T4	60	24.30 \pm 3.40	14.00 \pm 2.75	
N stage				0.1
N0	50	30.62 \pm 4.83	19.00 \pm 2.56	
N1	34	20.92 \pm 4.05	12.00 \pm 3.27	
Tumor Stage				0.02
I-II	54	30.70 \pm 4.48	20.00 \pm 3.76	
III-IV	30	18.81 \pm 4.36	11.00 \pm 1.17	
UHRF1 Expression				0.003
Negative	45	33.15 \pm 4.92	22.00 \pm 2.46	
Positive	39	16.95 \pm 3.38	12.00 \pm 0.81	

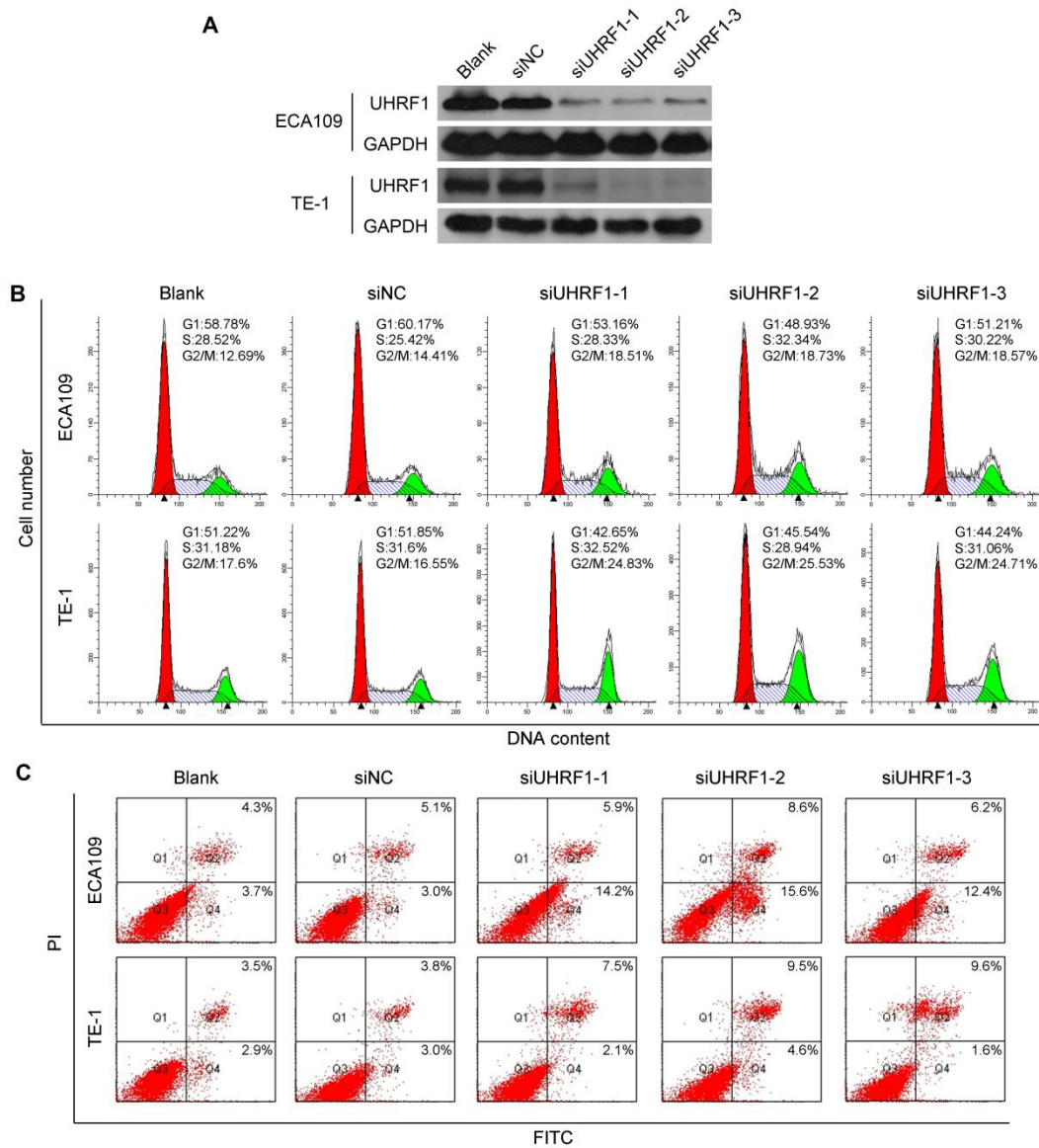


Fig S1. Knockdown of UHRF1 by siRNAs induced cell cycle arrest at G2/M stage and apoptosis in ESCC cells. A. The knockdown efficiency of siRNAs against UHRF1 was confirmed by Western Blotting in ECA109 and TE-1 cells. **B.** Cell cycle changes after knockdown of UHRF1 by siRNAs were detected with FCM in ESCC cells. **C.** Apoptotic changes in cells after knockdown of UHRF1 were examined with FCM.